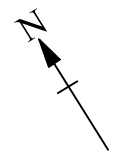


SARMATANR (SMND)
 E.I. MACLS 'B' CLASS STD-III(R)



← UP DN →

C/L OF STATION BUILDING
 KM. 376.54 (FROM HWH)
 CH: 00.00

C/L OF IBP-8 (SMND-HRE)
 (KM.-379/23-25)(379.810m)
 (CH:3270.0m FROM SMND S.B)
 CH: 00.00

