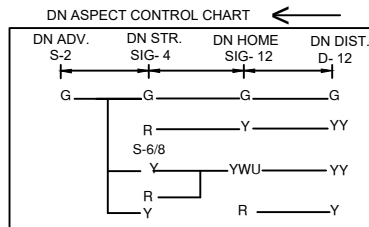
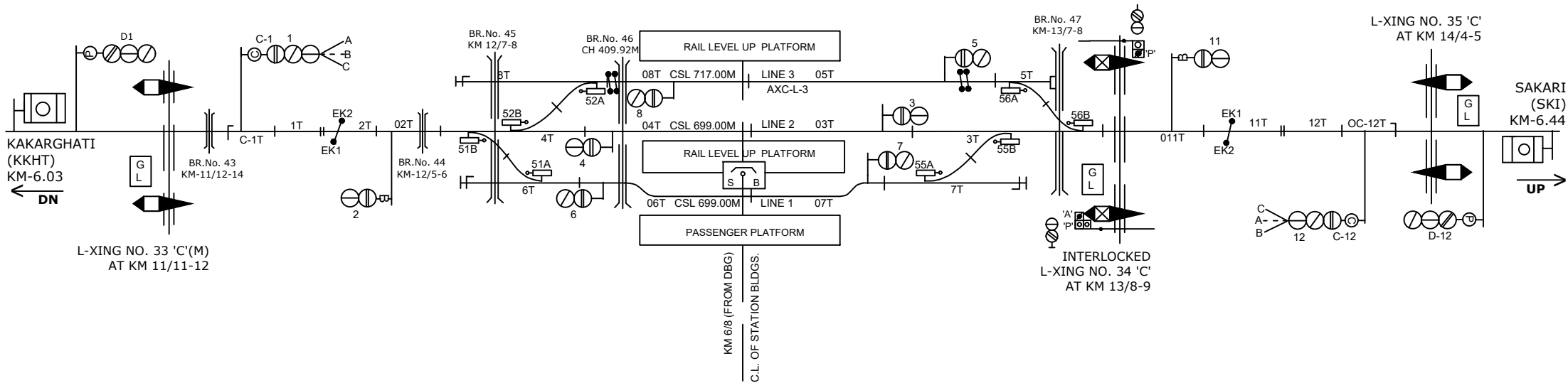
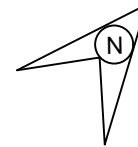
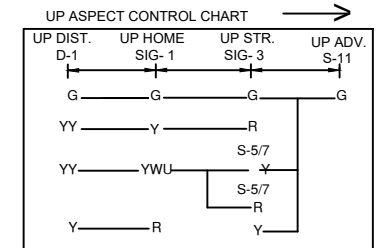


TARSARAI STATION

तारसराय स्टेशन



- CONNECTED WITH LC GATE No. 33 'C'
- CONNECTED WITH LC GATE No. 34 'C'
- CONNECTED WITH LC GATE No. 35 'C'



CLASS OF STATION : B
STD OF SIG & INTERLOCKING: STD-II®

EAST CENTRAL RAILWAY SAMASTIPUR DIVISION				STATION WORKING RULE DIAGRAM MACL, STD-III, CLASS 'B'	TARSARAI	SWRD NO.-
	Sr.DSTE/SPJ	DSTE/SPJ	JE/DRG	TO SUIT SIP NO. ECR/SIP/SPJ/372/2007 ALT-VI		DY.CSTE/RE/ DNR/01/2020(RD)