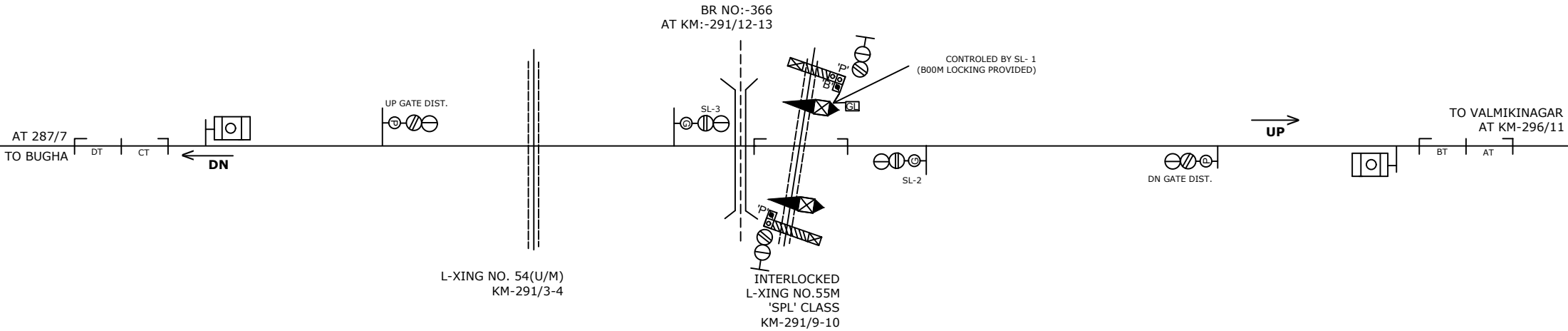
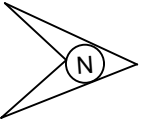


# L.C NO.55'SPL'



NOTE:-  
MAGNETO TELEPHONE CONNECTION PROVIDED SEMRA STATION.

<b>E.C. RAILWAY</b>  SAMASTIPUR DIVISION				<b>STATION WORKING RULE DIAGRAM</b> <b>OF L-XING No.55'SPL'</b> <b>BETWEEN</b> <b>BUGHA AND VALMIKINAGAR</b> <b>AT KM 291/9-10</b>	NOT TO SCALE SWRD NO. <b>SR./DSTE/SPJ</b> <b>2011(RD)/07</b>
	SR.DSTE/SPJ	DSTE/SPJ	JE/DRG	TO SUIT SIP No.ECR/SIP/SPJ/L-XING- 55 'SPL'/2011ALT-I	