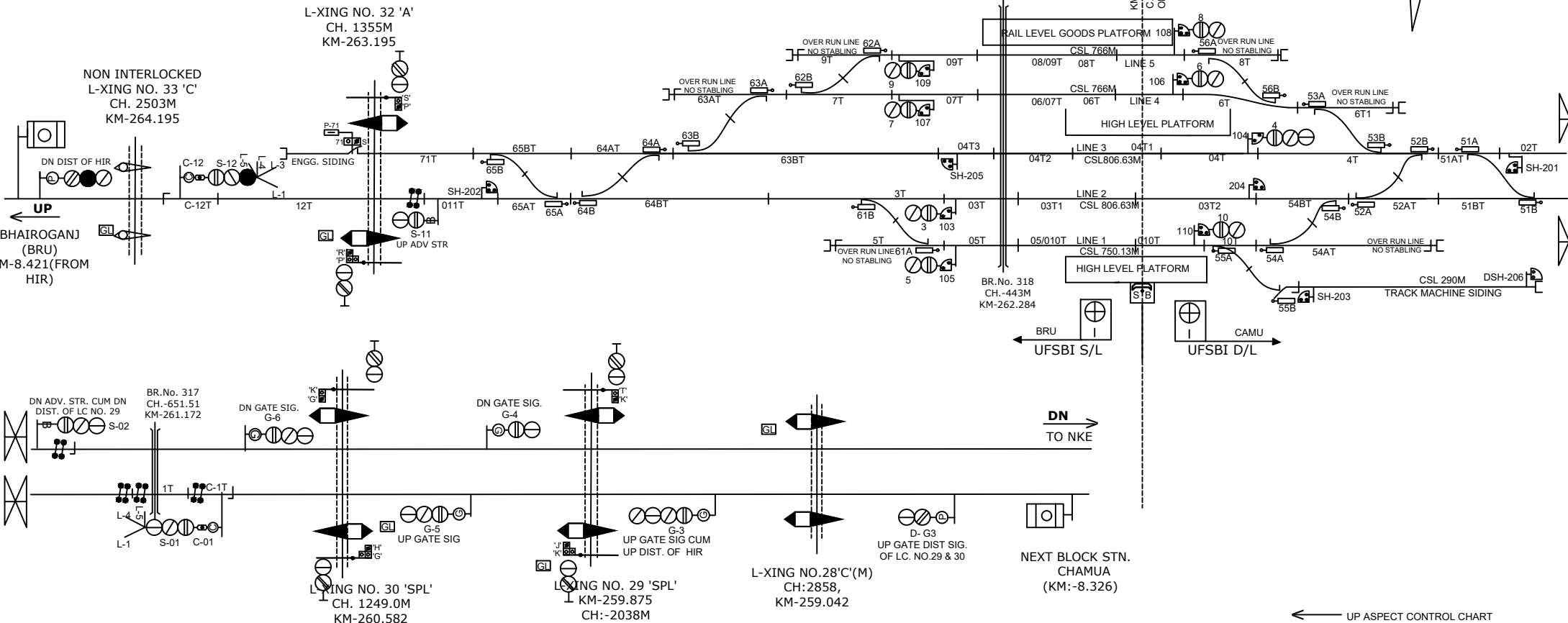
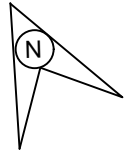


# HARINAGAR STATION

## हरिनगर स्टेशन



NON INTERLOCKED  
L-XING NO. 33 'C'  
CH. 2503M  
KM-264.195

L-XING NO. 32 'A'  
CH. 1355M  
KM-263.195

BR.No. 317  
CH.-651.51  
KM-261.172

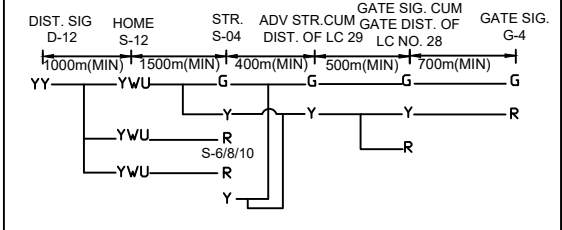
L-XING NO. 30 'SPL'  
CH. 1249.0M  
KM-260.582

L-XING NO. 29 'SPL'  
CH:-2038M  
KM-259.875

L-XING NO.28'C'(M)  
CH:2858,  
KM-259.042

NEXT BLOCK STN.  
CHAMUA  
(KM:-8.326)

DN ASPECT CONTROL CHART



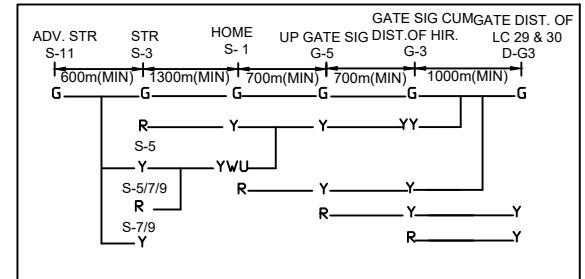
- CONNECTED WITH SM AT L-XING No. 32 'C' AT KM 263.195 BETWEEN BRU-HIR
- CONNECTED WITH SM AT L-XING No. 33 'C' AT KM 264.195 BETWEEN BRU-HIR

CONNECTED WITH SM AT L-XING No. 26'SPL' AT KM. 256.7 BETWEEN CAMU-HIR

CONNECTED WITH SM AT L-XING No. 28 'C' AT KM 259.042 & 29'SPL' AT KM. 259.875 BETWEEN CAMU-HIR

CONNECTED WITH SM AT L-XING No. 30 'C' AT KM 260.582 BETWEEN HIR-CAMU

UP ASPECT CONTROL CHART



CLASS OF STATION : B  
STD OF SIG & INTERLOCKING: STD-II®

EAST CENTRAL RAILWAY  
SAMASTIPUR DIVISION

(E.I)  
STATION WORKING RULE DIAGRAM  
MACL, STD-II®, CLASS 'B'

HARINAGAR

SWRD NO.-