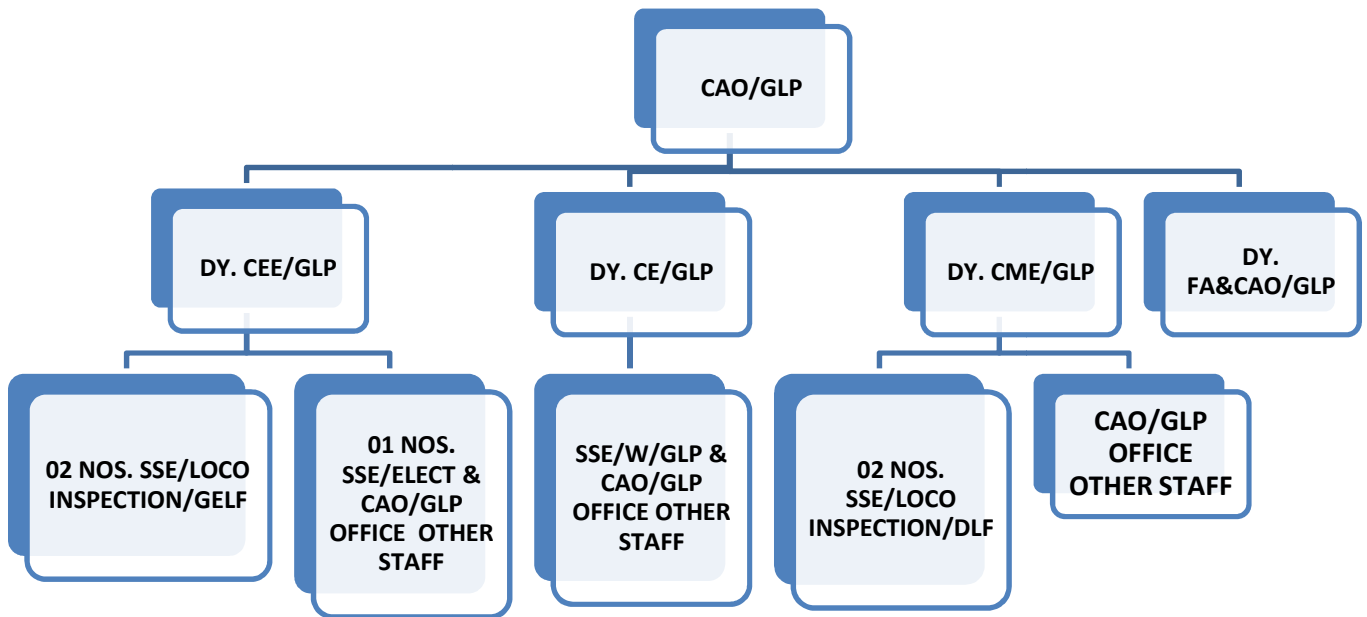


ORGANIZATION CHART OF GREENFIELD LOCOMOTIVE PROJECT



GREENFIELD LOCOMOTIVE PROJECT

1. GENERAL



WAG12B LOCOMOTIVE



WDG4G LOCOMOTIVE

- M/s Greenfield Electric Locomotive Pvt. Ltd. Madhepura & M/s Wabtec Diesel Locomotive Pvt. Ltd. has been set up under Public-Private Partnership agreement at the estimate cost of 1293 & 2052 Crores.
- It is a joint venture between Ministry of Railway with equity share of 26% and a leading international Electric Locomotive Manufacture i.e. M/s Alstom India Pvt. Ltd. & M/s Wabtec Diesel Locomotive Pvt. Ltd. who has brought into State of the art technology in the lands of BIHAR.
- The Electric Locomotive & Diesel Locomotives availability and Energy Efficiency standard is comparable to the world's standards.
- As per PCMA (Procurement-cum-Maintenance Agreement) M/s MELPL, Madhepura will turn out 800 numbers of 12000 HP, 8 Axle, Bo-Bo type Electric Locomotive, based on IGBT technology, in a span of 11 years to cater the need for hauling heavy Goods traffic preferably on dedicated Freight Corridor (DFC). & M/s Wabtec Diesel Locomotive Pvt. Ltd. Marhowra will turn out 700 numbers of 4500 HP and 300 numbers of 6000 HP, 6 Axle, Co-Co type Diesel

Locomotive, based on IGBT technology, in a span of 11 years, to cater the need for hauling heavy Goods traffic on important rail links.

- To Discharge the company obligations as per provision of PCMA Agreement, The company has built and operate maintenance depot for maintenance of WAG12B locomotives, company setup 2 depot, one at Saharanpur (Northern Railway) Uttar Pradesh (for 1st 250 Locomotive maintenance) and one at Nagpur (Central Railway) Maharastra (for 251th to 500).
- To Discharge the company obligations as per provision of PCMA Agreement, The company has built and operate maintenance depot for maintenance of WDG4G and WGD6G locomotives, company setup 2 depot, one at ROZA (for 1st 250 Locomotive maintenance) and one at Gandhidham (for 251th to 500)
- Spread over Around 300 Acre land factory also has a township for its employees of MELPL/Madhepura & 200-acre land, the factory has a township also attached for its employees for M/s Wabtec. Pvt. Ltd/Marhowra.
- Further, the 33KV power supply, Road connectivity with NH-107, Rail connectivity & electrified traction lines have also been provided to M/s MELPL/Madhepura. A 15 Km 132 KV transmission line from Singheswar Grid Sub-station and 132/33/25 KV sub-station at Madhepura has been constructed by Railway for power supply to the factory as well as traction supply to the newly electrified Mansi - Madhepura section. & A 25 Km 132 KV transmission line from Masrak grid sub-station and 132/33KV sub-station at Marhowra has been constructed by Railways for power supply to the factory for M/s Wabtec Pvt. Ltd./Marhowra.
- The MELPL factory was dedicated to nation and the prototype locomotive was flagged off by Hon'ble Prime Minister on 10th April 2018.

2. Production Performance of WAG12B Locomotives:

Supply Programme (As per PCMA)	Production in Numbers	
	Target	Actual
	WAG12B (12000HP)	WAG12B (12000HP)
1st YEAR (2017-18)	1	Nil
2nd YEAR (2018-19)	4	Nil
3rd YEAR (2019-20)	35	1
4th YEAR (2020-21)	60	89
5th YEAR (2021-22) (Up to Mar-2022)	100	110
6th YEAR (2022-23) (Up to May	100	24
Total	300	224

3. Production performance of WDG4G & WDG6G Locomotives:

Supply Programme (As per PCMA)	Production in Numbers					
	Target			Actual		
	WDG4G (4500HP)	WDG6G (6000 HP)	TOTAL	WDG4G (4500HP)	WDG6G (6000 HP)	TOTAL
1st YEAR (2017-18)	2	0	2	2	0	2
2nd YEAR (2018-19)	96	2	98	81	2	83
3rd YEAR (2019-20)	85+15backlog	15	100+15backlog	100	5	105
4th YEAR (2020-21)	80	20+10backlog	100+10backlog	80	30	110
5th YEAR (2021-22) (Up to Mar-2022)	75	25	100	75	25	100
6th YEAR (2022-23) (Up to May-2022)	100	NIL	100	15	NIL	15
TOTAL	438	62	500	343	62	415

4. General information of WAG12B, WDG4G & WDG6G Locomotives:

SN	Parameters	WAG12B	WDG4G	WDG6G
1	Gross Horse Power (GHP)	12000 (6000+6000)	4500	6000
2	Traction Horse Power (THP)	12000	4260	5686
3	Nominal Axle Load (MT)	22.5 Tonn.	22	23
4	Starting TE	706 KN	544 KN	570 KN
5	Continuous TE	540 KN	405 KN	420 KN
6	Braking Effort	Reg. 514 KN, Pn.-153	270 KN	286 KN
7	Maximum speed	120 kmph	100 Kmph	100 Kmph
8	Brake Specific fuel consumption (BSFC) @ N8	NA	<=150 g/bhp-hr	<=150 g/bhp-hr
9	Fuel Tank capacity (In Liters)	NA	6000	8000
10	Loco weight	180 T.	132 T	138 T
11	Length over coupler pulling faces	38400 mm	22567 mm	22313
12	Minimum Maintenance interval	45 days	92 days	92 days
13	Minimum availability (%)	95	95	95

5. Location of site

Distance between Madhepura Railway Station & Darbhanga Airport to MELPL/Factory Madhepura

- **Madhepura Electric Locomotive Pvt. Ltd. Distance is 5.7 Km from nearest Madhepura Railway Station and 112.5 Km from Darbhanga Airport.**

Map Location from Madhepura Railway Station to MELPL Factory.

<https://www.google.com/search?q=madhepura+railway+station+to+rail+engine+factory+distance&oq=madhepura+railway+station+to+rail+engine+factory+&aqs=chrome.1.69i57j33i160.24001j0j7&sourceid=chrome&ie=UTF-8#>

Distance between Chapra Railway Station & Patna Airport to Wabtec/Factory Marhowra

- **Wabtec Pvt. Ltd. Distance is 18 Km from nearest Chapra Railway Station and 100 Km from Patna Airport.**

6. Contact Detail of Greenfield Locomotive Project

S.N.	Name	Designation		Office DOT (0612)
1.	C.N. Singh	CAO/GLP		2677894
2.	Anurag Kumar	Dy. CE/GLP		2677383
3.	Iqbal Ahmed	Dy. CME/GLP		
4.	J.P. Singh	Dy. CEE/GLP		2677090
5.	N. Choudhary	Sr. AFA/GLP		
6.	A.K. Jha	PS-II to CAO/GLP	9771425363	Fax-2677111
7.	Kumar Abhishek	CA/GLP	9771425457	
8.	Bhola Ram	Ch. OS/Civil Tender/GLP	9771425399	
9.	Murari Prasad	Ch. OS/GLP	9153992025	
10.	Ajeet Kumar Akela	OS/Loco Bill/GELF	9771425397	
11.	Randhir Kumar	OS/R&D/GLP	9771425398	
12.	Rajnish Kumar Sinha	Jr. Clerk Loco Bill/ GELF	9771425391	
13.	Dinesh Kumar	OS/Budget/GLP	9771425458	
14.	Pawan Kumar	OS/Loco Bill/DLF	9771425461	
15.	Manoj Kumar	SSE/Elect/GLP	9771425364	
16.	Nawal Kishor Kumar	SSE/Loco/GELF	9771425396	
17.	Santosh Kumar	SSE/Loco/GELF	9771425455	
18.	Pranit Sarvesh	SSE/D/Loco/DLF	9771463413	
19.	Rajesh Kumar	SSE/E/D/Loco/DLF	9771404045	
20.	Santosh Kumar	SSE/Works/GLP	9771425456	
21.	Vikash Kumar	JE/Works/GELF	9771425387	
22.	Pushpak Punit	JE/Drg/GLP	9771425459	
23.	Pankaj Kumar	Sr. Tech/GLP	9771425460	
24.	Mukesh Singh Yadav	Tech-III/GLP	7070999442	
25.	Amit Kumar	SSO/A/Exp./GLP	9771425560	
26.	Varjesh Bindker	SSO/A/FIN/GLP	7463881329	
27.	Rajiv Kumar	SSO/A/Books & Budget/GLP	9771425386	
28.	Arbind Kumar	SSO/Admin/GLP	9771425390	
29.	Upendra Nath	SSO/Estt./GLP	9771425462	
30.	Hari shankar Pandey	A.A./GLP		
31.	Jay Prakash Kamat	A.A./Exp./GLP	9771425373	
32.	Smt. Swati	A.A./GLP	7542022536	