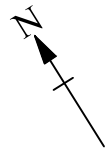
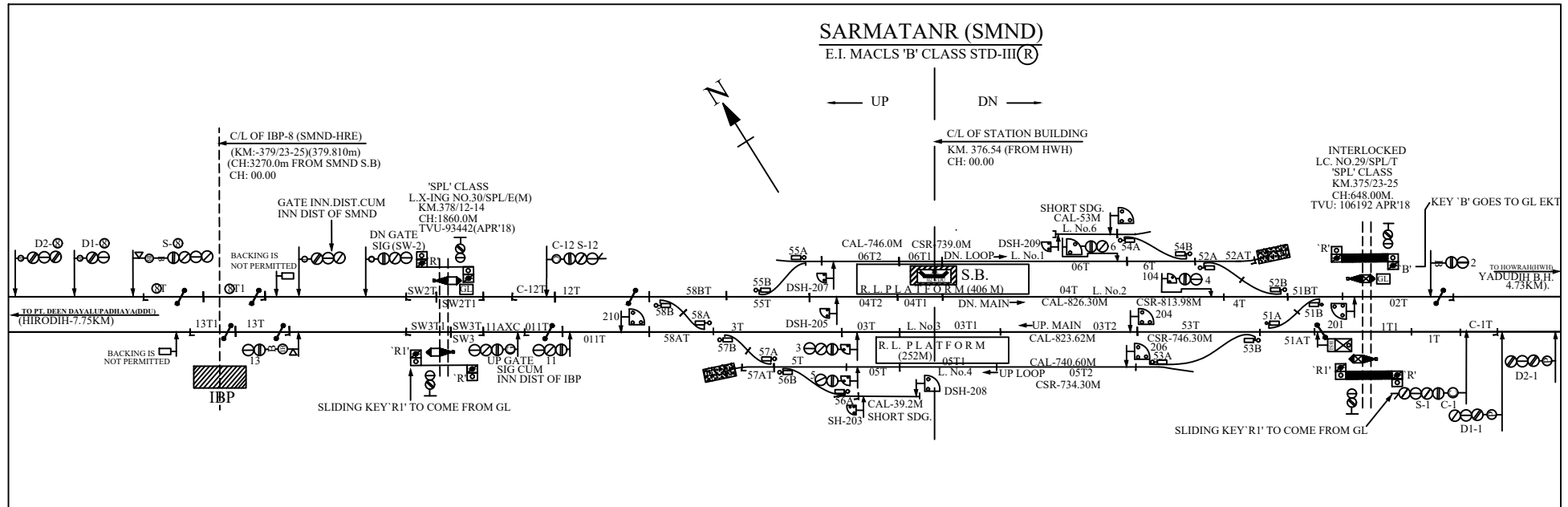


SARMATANR (SMND)

E.I. MACLS 'B' CLASS STD-III(®)



← UP DN →



C/L OF STATION BUILDING
KM. 376.54 (FROM HWH)
CH: 00.00

C/L OF IBP-8 (SMND-HRE)
(KM: 379/23-25)(379.810m)
(CH:3270.0m FROM SMND S.B)
CH: 00.00

INTERLOCKED
LC. NO.29/SPL/T
'SPL' CLASS
KM.375/23-25
CH:648.00M
TVU: 106192 APR'18
KEY 'B' GOES TO GL EKT

BACKING IS NOT PERMITTED

IBP

SLIDING KEY 'R1' TO COME FROM GL

SLIDING KEY 'R1' TO COME FROM GL

TO HOWRAH/HWH
YADUDIH B.H.
(4.75KM)

TO FT. BEEN DAYALUPABHAY/ADBU
(HIRODIH-7.75KM)

'SPL' CLASS
LX-ING NO.30/SPL/E(M)
KM.378/12-14
CH:1860.0M
TVU-93442(APR'18)

GATE INN.DIST.CUM
INN DIST OF SMND

DN GATE
SIG (SW-2)

UP GATE
SIG CUM
INN DIST OF IBP

R.L.P.L.A.T.F.O.R.M
(406M)

R.L.P.L.A.T.F.O.R.M
(252M)

SHORT SDG.
CAL-53M
L.No.6

SHORT SDG.
CAL-39.2M
SH-203

UP MAIN
03T2

UP LOOP
05T2

DN LOOP
L.No.1

DN MAIN
04T2

L.No.2

L.No.3

L.No.4

L.No.1

L.No.2

L.No.3

L.No.4

L.No.1

L.No.2

L.No.3

L.No.4