



EAST CENTRAL RAILWAY

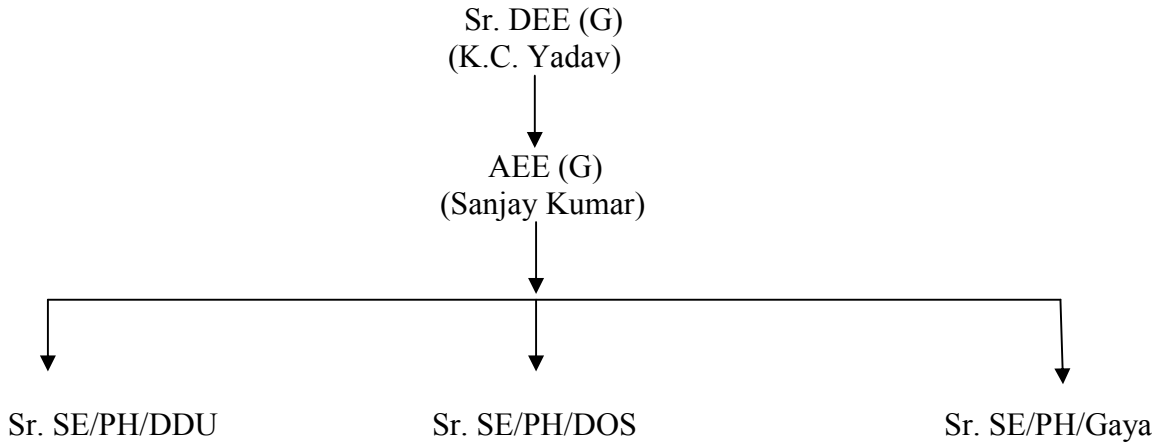
Pt. DEEN DAYAL UPADHAYA

Electric (General)

ELECTRICAL GENERAL

1.0 ORGANISATION STRUCTURE:-

Electrical (G) Branch is headed by Sr. DEE (G) and is assisted by 01 AEE (G)



Electrical (G)/DDU is being looked after by three installation in charges as under:

2.0 POWER GROUP

Sl.	Installation	Territorial Jurisdiction	Details of works
01	Sr. SE/Elect/Power House/ DDU	DDU - KMGE.	They have to supervise preventive and break-down maintenance work of transformers, Sub – Stations, ART, D.G. Set, pump, window A.C. and Split A.C, Water Coolers, Desert Coolers, central A.C. Plant, Water Chiller Plant etc. in their jurisdiction. They also procure stock / Non Stock items required for preventive maintenance.
02	Sr. SE/Elect/Power House/ DOS	SSM - AUBR, B.D. Section from BCJ to SQS & SSM-ARA section.	
03	Sr. SE/Elect/Power House/ GYA	PES - MPO.	

2.1 MAJOR ASSETS :

- DDU division has Two Nos. 33/11 KV Sub- Stations. (01at DDU & 01 at Gaya)
- 11 KV / 440 V Sub – stations : 55 Nos.

Sl.	Description	Qty	Sl.	Description	Qty
01	Transformers 33/11 KV of 05 MVA	01 No.	10	Mini Mast	52 Nos.
02	Transformers 33/11 KV of 03 MVA	05 Nos.	11	F.L. Towers In Yard	65 Nos.
03	Transformers 11KV/440V	81 Nos.	12	Escalators (04 Nos.)	04 Nos.(02 Nos. at DDU and 02 Nos. GAYA
04	D.G. Set (GYA : 03 , DOS = 02, DDU =04)	09 Nos.	13	Lifts (5 Lifts)	Commissioned 02 No. at DDU and 03 no. at GAYA
05	Pumps	101	14	National	05 Nos.(DDU ,

		Nos.		Monumental Flags(30.5 Mtr)	GAYA, AUBR, SSM&BBU)
06	Window A.C.	216 Nos.	15	Water coolers	103Nos.
07	Desert coolers	665 Nos.	16	UPS	60 nos.
08	Split AC	465 Nos.	17	Solar Geysers	05 Nos.
09	High Mast	98 Nos.	18	Solar Street Light 15 Wp	100 Nos.

2.2 HT Load Sanction (Non – Traction)

DDU 33 KV (Domestic) LMV – 1	DDU 33 KV (Industrial) HV -2	DDU 11 KV (Plant Depot) LMV -2	Gaya (KVA)	DOS (KVA)	SEB (KVA)	SSM (KVA)	XBKJ	RFJ (KVA)	JPL (KVA)
5500 KVA	2000 KVA	2000 KVA	1800	550	333	110	75	100	100

2.3 PASSENGER AMENITIES ITEMS AT MODEL STATIONS:

Sl.	Passenger Amenity Item	DDU	SSM	DOS	AUBR	SEB	RFJ	GYA	JPL	
01	D.G. Set Supply	No.	No.	Yes 01 No.	No.	Yes 01 No.	No.	Yes 03 Nos.	No.	
02	High Mast in Circulating Area.	02 Nos.	01 No.	01 No.	01 No.	01 No.	01 No.	02 Nos.	01 No.	
03	Water Cooler	11 Nos.	02 Nos.	03 Nos.	02 Nos.	02 Nos.	01 No.	08 Nos.	1 No.	
04	Signage's	Yes	Yes	Yes	Yes	Yes	Yes	Yes	Yes	
05	Fan On PF	UP	157	24	15	10	08	08	39	4
		DN	114	26	18	08	10	11	52	8
06	Lift	02 Nos.	No.	No.	No.	No.	No.	03 Nos.	No.	
07	Escalator	01 Set (Up & DN)	No.	No.	No.	No.	No.	01 Set (Up & DN)	No.	

3.0 Staff Position of Electrical (G)/DDU :

POWER :				SUMMARY ON ROLL			Remark
Categories	Sanctioned	MOR	Vacancy	Supervisor	Artisan	Minis.	
Supervisor							
Sr. SE	17	17	0	25	279	4	
JE	08	08	0				
Skilled	195	187	8				
Unskilled	115	92	23				
Ministrial	7	4	3				
Peon		1	01				
Total	342	309	33				

Train Lighting :

Categories	Sanctioned	MOR	Vacancy	Supervisor	Artisan	Minis.	Remark
Supervisor				14	111	2	
Sr. SE	10	11	+01				
JE	6	3	3				
Skilled	81	76	5				
Unskilled	40	35	5				
Ministrial	3	2	1				
Total	140	127	13				

Sr DEE(G)/DDU Office:-

Categories	Sanctioned	MOR	Vacancy	Supervisor	Artisan	Minis.	Remark
Supervisor							01 Additional Sr. SE working at HQ
Sr. SE	2	2	0				
Sr. SE/Drg	1	1	0				
JE	1	1	0				
Unskilled/ Group "D" Peon	5	5	0				
Ministrial	7	4	3				
Typist+ Steno	3	0	3				
Total	19	13	6				

Summary	Total SS	Total MOR	Total Vac.
	501	449	52

ACHIEVEMENT OF ELECT. (G)/DDU IN THE YEAR 2021-22

Sl	Description of work
01	Power supply given to Newly installed Oxygen Plant in DRH/DDU.
02	Electrification work of Backley Stadium/DDU and GM/ECR Rest house at Lodhi Road/NDLS completed successfully.
03	01 No. Pole mounted 100 KVA distribution Transformer commissioned at Backley Ground for reliable and better power supply arrangement.
04	Additional Power Supply arranged at Divisional Control/DDU and DRH/DDU through 100 KVA AT.
05	09 Nos. Submersible Pump Cap. 20HP/15000 GPH provided at DDU.
06	LED signage for PRS, UTS, Waiting Halls and ORH at DDU Provided.
07	Power supply arrangement made available for installation of ATVM over DDU Division.
08	33/11 KV Sub – station at Gaya commissioned on dt. 29/11/2021.
09	02 Nos. Lifts (01 Nos. at PF-4/5 & 01 No. at Circulating Area) successfully Installed at GAYA.
10	Additional Lighting arrangement made at GAYA Station in view of Pitri Paksha Mela for Passengers' conveniences.
11	Electrification work of 60 Nos. type-II quarter of Burma Cell Colony/GAYA completed successfully.
12	Electrification work of New RPF Barrack/GAYA, 10 Beded RPF Barrack/DOS and RPSF Barrack & Loco RPF Barrack/DDU successfully completed.
13	The work of "Joint development of passenger amenities (Associated with Ministry of Tourism) at GAYA" successfully completed on Dt.14.05.2021.
14	Electrification work of Good Sheds i.e. IMGE, AUBR, SEB & BBU successfully completed on Dt.07.09.2021.
15	350 Mtrs damaged LT Cable replaced departmentally at LC Gate No.32 at ANH.
16	Local Power Supply arrangement made available to KYF, KVQ, SZF, URD, KRTA & SQS Stations of BD Section.
17	At ANH- 3 Nos. & BSYA -01 No. 2 HP Pump provided.
18	Electrical load enhanced at MDJ from 12 KW to 50 KW, HDN from 7 KW to 30 KW and JPL 100KW to 170KW.
19	12 Nos. Split ACs installed successfully in Relay rooms of BD Section i.e. BCJ, ANH, BSYA, JPL, KYF, SZF, KVQ, MDJ, URD, SQS, KRTA & HDN.
20	Electrification work of inter locking of mid section Engg LC Gate No.6 between KSTA & PRYA Station successfully completed.
21	Electrification of extended Pilgrim siding at Gaya completed.
22	Power supply arrangement for Automatic Coach washing siding Pit at Gaya completed.