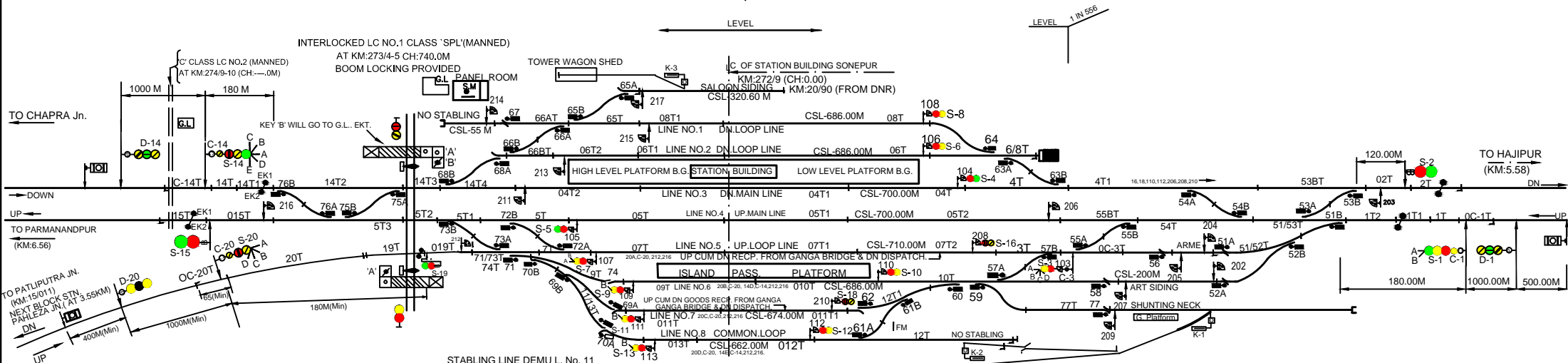
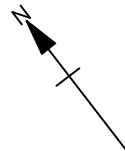
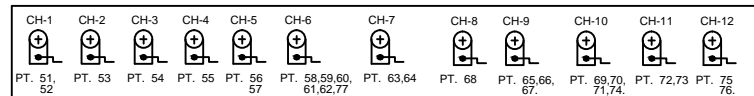
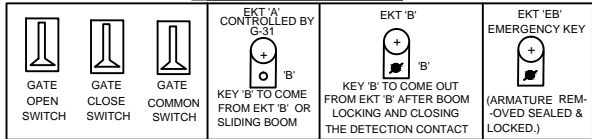


AT G.L. LC NO. 1'SPL'



- PANEL DETAILS:-**
- MAIN SIGNAL BUTTONS 1,2,3,4,5,6,7,8,9,10,11,12,13,14,15, 16,18,19,20.
 - CALLING-ON SIGNAL BUTTONS C-1,C-3,C-14, C-20
 - POINT CONTROLL BUTTONS 51,52,53,54,55,56,57,58,59,60,61,62,63, 64,65,66,67,68,69,70,71,72,73,74,75,76,77.
 - CRANK HANDLE CONTROLL BUTTONS CH-1,CH-2,CH-3,CH-4,CH-5,CH-6, CH-7,CH-8,CH-9,CH-10,CH-11,CH-12.
 - SHUNT SIGNAL CONTROLL BUTTONS 103,104,105,106,107,108,109,110,111, 112,113,203,205,206,207,208,209,210, 211,212,213,214,215,216,217.
 - L-XING GATE CONTROL BUTTON G-31.

- RUNNING REPAIR DEMU SHED L. No. 13
- RUNNING REPAIR DEMU SHED L. No. 14
- HEAVY REPAIR DEMU SHED L. No. 15
- HEAVY REPAIR DEMU SHED L. No. 16
- LINE No. 18
- LINE No. 17

- NOTE:-**
1. ABSOLUTE BLOCK SYSTEM WORKING WITH HAJIPUR, PARMANANDPUR & PAHLEZA STN.
 2. DIL BLOCK INSTRUMENT WORKING WITH HAJIPUR & TLB(I) (DIDO HANDLE TYPE) WORKING WITH PAHLEZA SITUATED IN PANEL CABIN.
 3. MAGNETO TELEPHONE PROVIDED BETWEEN PANEL ASM & GATE NO.1'SPL & 2'C'.
 4. ALL ANGLE OF L-XING ARE 1 IN 12 EXCEPT AS MENTIONED IN SIP.
 5. CONTROL TELEPHONE PROVIDED IN PANEL CABIN
 6. AXEL COUNTERS FOR LAST VEHICLE CHECKING PROVIDED IN BOTH DIRECTIONS.
 7. CRANK HANDLE SITUATED IN SM/BG ROOM HAVE THEIR CONTROL BUTTON SITUATED IN PANNEL ASM ROOM.
 8. SLIDING PROVIDED AT L.C. GATE NO. 1'SPL & 3'A'
 9. CONNECTIVITY BEYOND HPL K1 & K2 OF DEMU SHED YARD WILL REMAIN NON-INTERLOCKED.
 10. K1, K2 & K3 POINTS ARE PROVIDED WITH HAND PLUNGER & KEY LOCK AND ARE OPERATED BY ARC LEVER.
 11. TRACK CIRCUIT NO. 20T & 19T ARE STAGGERED BY 1.82M.
 12. DN RECEPTION TO LINE NO. 5 & 7 FROM PAHLEZA ONLY.
 13. THE PROPOSED WORK WILL BE CARRIED OUT AS ALTERATION IN THE EXISTING SIGNALLING ARRANGEMENTS ,APPROXIMATELY 160 NEW RELAYS WILL BE REQUIRED.
 14. D/L SSBPAC(D) (UFSB) WITH PARMANANDPUR SITUATED IN PANEL CABIN.

EAST CENTRAL RAILWAY SONPUR DIVISION	DSTE/ECR/SEE	SSE/DRG/SEE	STATION WORKING RULE DIAGRAM MACL STD-II(R) CLASS-B'	SONPUR	SW/RD NO. DY. CSTE/CON/ISP/J 2014(RD)/02
			TO SUIT SIP NO. ECR/SIP/SEE/130/2014, ALT-IX		

C/S S/DSTE/ECR/SEE