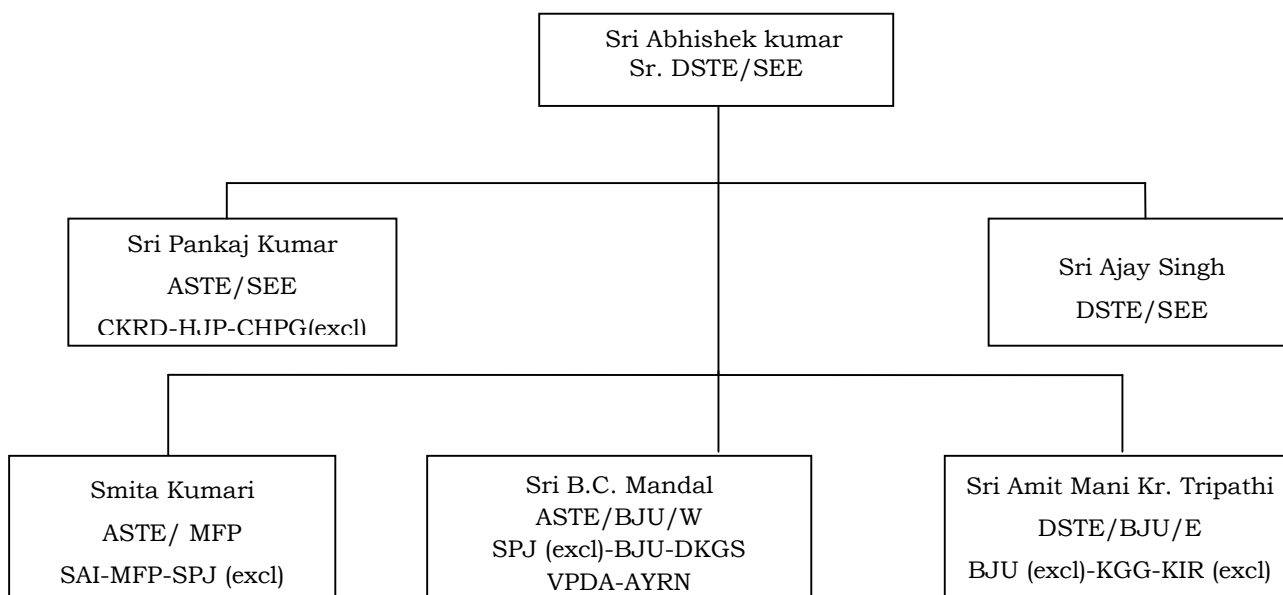


Signal & Telecommunication

General Information

I. Organization of Officers of Sonpur Division-



II. NON GAZETTED:

GROUP	SANCTION POSTS	ACTUAL POSTED	VACANT
"C"	518	380	138
"D"	353	355	+02
TOTAL	871	735	136

III. SIGNALING ASSETS AT A GLANCE

1.	Total No. of Stations	66
i)	Central Panel	49
ii)	End Panel	01 BJU (BJU/West, BJU/East)
iii)	EI	15 Stns. (GHZ, RD, TUR, KHI, KRBP, DUBH, DOL, SSO, GRL, BNR, SAI, VPDA, MOG, NNNL, SPP)
iv)	RRI	01 (HJP)
v)	IBH	02 Nos. (BUJ, BRK B)
2.	Type of Signals	
i)	Station with LED Signal	66 Stations
3.	Standard of Interlocking	
i)	Standard II (R)	65 Stations.
ii)	Standard I	01 Station (BJU)
4.	Block Instrument	
i)	Tokenless Block Instrument	34 Nos. (32 Nos. Diado Type & 2 Nos. Push button type)
ii)	SGE Double line Block Instrument	94 NOS

iii)	UFSBI Block Instrument	24 Nos.		
5.	Electric Point Machine	1085 Nos. (1102)		
6.	Axle Counter (for Block Proving)	72 Block Section. (Out of 78 BS)		
7.	Axle Counter (for Track Circuit)	13 Nos. at 07 stns (14)		
8.	Integrated Power Supply (IPS)	76 Nos. (At 66 stns+02 IBH)		
(i)	Mini IPS/Inverter	LC gates: Mini IPS (10 Nos.) -97B/NRPA, 38C/BNR-SAI, 106C/MFP-KVC, 18B1/TGA-BCA, 57A/BJU-TIL; 38C/DSS-NAZJ, 43C/LAK, 46C/BGS, 104C/MFP, 24C/BCA-STJT Inverter(05Nos) -(56C/TIL-BJU; 21C/KGG -MNE; 26, 27/MNE-MSK; 51A/BGS)		
9.	Data Logger	68 Nos. (At 66 stns.) (69)		
(i)	RTU	08 Nos. (106C/MFP-KVC (512 input D/L), 3T1/BJU Bypass, 38B1/DSS-NAZJ, IBH (BRKB), 21C/KGG-MNE, 26C, 27C/MNE-MSK, 24C/BCA-STJT		
10.	Total No. of Interlocked LC-Gate	171 Nos.		
11.	Total No. of Gate telephones	338 Nos.		
12.	DESU	177044		
13.	Position of interlocked LC gates in SEE Division			
	Class	Traffic	Engineering	Total
	Spl	13	10	23
	A	08	07	15
	B1	03	04	07
	B2	04	05	09
	B	18	07	25
	C	74	18	92
	Total	120	51	171

IV. TELECOMMUNICATION ASSETS AT A GLANCE

1	Quad & OFC cable	503.29 R Km (Entire Division)
2	Section Control Boards with voice logger	05 Nos. (HJP-SPP-BCA, KIR-BJU, KTI-SAE, CPR-NRPA, BJU Area Control)
3	Telephone Exchanges	06 Nos. (SEE, HJP, MFP, GHZ, KGG & THB)
4	OFC Section	04 Nos.(CPR-NRPA, BJU-KIR, MFP-SAE & SEE-SPP-BCA)
5	TPC & Remote Control	BJU-BCA-SPP-SEE-GJH, HJP-MFP-SPJ-BCA, BJU-KIR
6	Passenger Amenities	
I	Manual PA System	Provided at all stations in SEE division
II	Electronic Digital Clock	07 Nos.(MNE, THB, BGS, KGG, SEE, HJP, MFP)
III	NTES(National Train Enquiry System)	Sonpur Control, Sonpur Station, Hajipur, Muzaffarpur, Naugachhia, Khagaria, Barauni)
IV	Auto Announcement System	14 Nos. (SEE, HJP, MFP, BJU, BGS, KGG, MNE, THB, MSK, NNR, KHQ, DSS, SPP, BJU Bypass)
V	BSNL Telephone/FCT(Jio SIM) on station	83 Nos. at all stations and enquiries.

VI	CGS(Coach Guidance System)	05 Nos. (HJP, SEE, MFP, KGG, BGS)
VII	Coach indication board	06 Nos. (HJP, MFP, BGS, KGG, SEE, BJU Bypass)
VIII	TIB(Train Indication Board)	07 Nos. (HJP, MFP, MNE, THB, BGS, KGG, SEE)
IX	LCD Display	06 Nos. (HJP, MFP, MNE, KGG, BGS, SEE)
X	Video Enquiry System	01 Nos. (HJP)
XI	Wi-fi facility	65 Nos. stations in SEE division
XII	Computerized Reservation Charting System	04 Nos. (HJP, MFP, BJU, KGG)
XIII	CCTV at stations.	08 Nos. (CCTV provided at SEE, HJP, MFP, BJU, KGG, NNA, MNE, BGS)
XIV	PRS	Locations-16 Nos. (DGA, SEE, HJP, MFP, DOL, KRBP, DSS, BJU, BGS, KGG, MNE, NNA, THB, KPGM, GRL, BNR)
XV	UTS	Locations-67 Nos. (SMO, THB, NNA, KUE, CRR, MNE, KGG, UMR, MSK, SKJ, LKN, BGS, BJU, BCA, DSS, TGA, RD, DUBH, SSO, KPGM, KRBP, DOL, NRPA, MFP, BNR, SAI, GRL, MOG, SPP, DES, AYRN, HJP, SEE, PMU, NYO, DGA, BAGL, GJH, TUR, KHI, UJP, TIL, SLT, STJT, STLR, NAZJ, LAK, PSR, DKGS, KTRH, NNR, SDG, MNO, CSR, VPDA, KHQ, GAI, CKRD, DPL, BKHR, NNNL, PHLG, GWH, SBDP, HUFPP, LLJP, VSHI)
XVI	UPT (UTS cum PRS terminal)	Locations- 17 Nos. (SAI, MNO, VPDA, UJP, AYRN, DES, SPP, MOG, BCA, TGA, BJU Bypass, LKN, MSK, NNR, KUE, CRR & SMO.)
XVII	On-Line booking of retiring room	Locations-07 Nos. (SEE, HJP, MFP, BJU, BGS, KGG, NNA)

V. Information Technology:

S. No.	Equipment	Remarks
1	Railnet facility	Provided in 750 Nos computers in division.
2	CMS	03 (Sonpur, Muzaffarpur and Barauni)
3	COIS/ICMS (Coaching Operation Information System / Integrated Coaching Management System)	03 Sonpur (CTNL & Carriage Control), Muzaffarpur (TNC /CDO) and Barauni (TNC/CDO)
4	FOIS Terminal (Freight Operation Information System)	16 (Sonpur, Sarai, Narayanpur Anant, Karpurigram, Barauni, Begusarai, Khagariya, Mansi, Naugachiya, Kursela, Semapur, IORG BJU, Sitalpur, Hajipur, Dinkar gram Simariya and Garhara yard)
5	T.M.S. (Terminal Management System)	16 (Sonpur, Sarai, Narayanpur Anant, Karpurigram, Barauni, Begusarai, Khagariya, Mansi, Naugachiya, Kursela, Semapur, IORG BJU, Sitalpur, Hajipur,

		Dinkar gram Simariya and Garhara yard)
6	(TSR) Train Signal Register system	HJP, MFP, BJU, KGG, MNE
7	IPAS	Sonpur, Barauni
8	Control Chart	All the 05 Boards digital integrated with COIS.

VI. HIGHLIGHTS OF SIGNALLING & TELECOMMUNICATION FROM APR 2020 TO Sept 2020

- 1 Interlocking of LC gates-** Total 01 No. LC 24C has been interlocked between STJT-BCA section.
- 2 IPS & Data logger-** All 66 stations of SEE division have been provided with IPS and Data logger.
- 3 Datalogger** is integrated with COA at 09 stations (BJU/E, BJU/W, GJH, SMO, PHLG, MFP, DGKG, MNR, KGG) and all stations has been provided with datalogger.
- 4 Datalogger upgradation-** Upgradation of datalogger has been done at BJU/E/O, DSS, GWH
- 5 ELD linking with datalogger has been done at** stations (DOL, KRBP, GHZ, GAI, DGA, HJP, DKGS, BKHR, CRR, PHLG, GWH)
- 6 Sliding Boom-**This year 01 No. sliding boom has been installed at LC gates at LC gate No. 24C between BCA-STJT section. With this all interlocked gates (171 Nos.) have been provided with Sliding boom barrier.
- 7 HASSDAC-** 02 Nos. HASSDAC has been commissioned between MNE -KGG Up and DN line section in SEE division.
- 8 Power segregation-**Segregation of power supply has been done in 43 sections.
- 9 Axle counter-**02 Nos. axle counter has been commissioned in parallel to track circuit at BKHR.
- 10 Electric Lifting Barrier-** 02 Nos Electric Lifting Barrier has been commissioned at LC gates 24C /(BCA-STJT), 97B/NRPA
- 11 Fire Alarm System** provided at 64 Nos. stations
- 12 Passenger amenities-**
 - i. CCTV has been commissioned at KGG, NNA, BJU, MNE, BGS.
 - ii. Wi-fi has been commissioned at MNE and BGS with this total commissioning at 64 stns.
 - iii. CCC system provided during
 - Phase-I , 09 Nos. stations (NNA, MNE, KGG, BGS, BJU, DSS, MFP, HJP, SEE) at various counter in Aug'20
 - Phase-II, 10 Nos. stations (TGA, BCA, GRL, PHLG, DGA, SPP, VPDA, MSK, SKJ, LKN) at various counter and at 06 Nos. Health Units (SEE, MFP, GHZ, KGG, MNE, THB) in Sept'20
 - iv. Railnet facility provided at KGG, MNE,THB, NNA, ZRTI/MFP for E-office work
 - v. 05 line train indication board at SEE
 - vi. 104 Nos. CGDB commissioned at SEE
 - vii. 03 Nos. UTS has been commissioned at HUFPP, LLJP, VSHI in GWH-VSHI section.

iii. Railnet provided at various department for use of E-office

ix. Approx 150 nos. additional Rainet connection provided at HQ/HJP

VII. PROGRESS OF IMPORTANT ITEMS:

Item No.	Description	Target of 2021-22	Proportional target upto June 2021	Achievement upto June 2021	Remarks
1	Signal Incidences	1733	867	264	-
2	Punctuality	475	238	2	-
3	Control Efficiency	99.95%	99.95%	99.98%	Target achieved.
5	Replacement of signaling/quad cable				
	Signaling Cable	87 Km	43.5 Km	43.415 Km	Target achieved.
	Quad Cable	40 Km	10 Km	2.84 Km	-
6	Replacement of Point Machine	40 Nos.	20 Nos.	33 Nos.	Target achieved.
7	Modified LED signals	80 Nos.	40 Nos	274 Nos.	Target achieved.
8	Battery replacement	220 Nos.	110 Nos	642 Nos.	Target achieved.
9	Replacement of track Relay.	65 Nos.	33 Nos	56 Nos.	Target achieved.
10	Provision & or replacement of Glued Joints in lieu of IBJs on the main line	65 Nos.	33 Nos	74 Nos.	Target achieved.

VIII. ASSISTANCE REQUIRED

- i. Workshop GKC and PTJ not supplying the EPM against the pending work order 0063, 00006, 000012, 000110 (80 Nos. received out of Qty 286 Nos.), 000029 (35 received out of 75 Nos.) at GKC and 000033 (Qty. 50 Nos.), 000015 (Qty. 25 Nos.), 000338 (Qty 50 Nos.) at PTJ. It is requested to arrange at least 50 EPMs for division.
- ii. UMNR, SKJ, SBDP should be handed over to division for maintenance after completing the deficiency work.