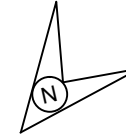


# DUMRA STATION

## डुमरा स्टेशन

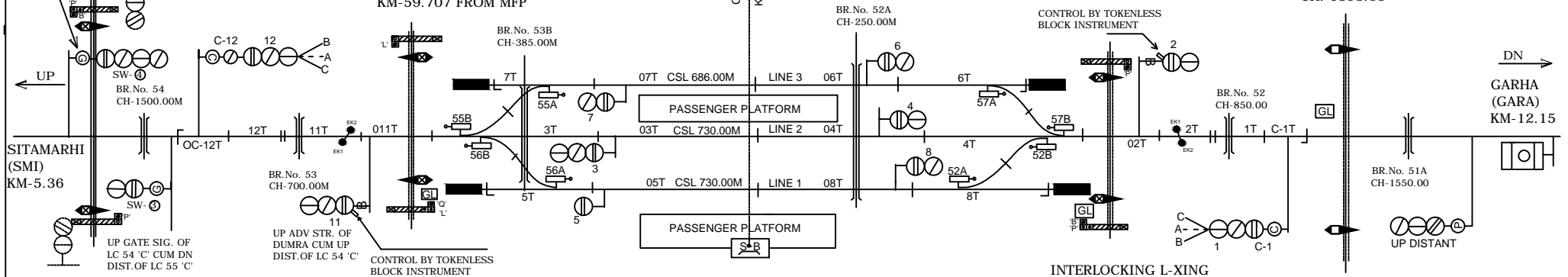


DN GATE SIG. OF  
LC 54 CUM DN  
DIST. OF DUMRA

L-XING NO. 54 'C'  
(M) CH. 1887.00  
KM-61.037 FROM MFP

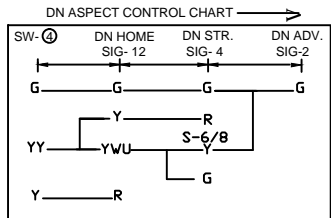
INTERLOCKING L-XING  
NO. 37 'C'  
(MANNED)  
CH. 540.00  
KM-59.707 FROM MFP

L-XING NO. 35 'C'  
CH. 1398.00

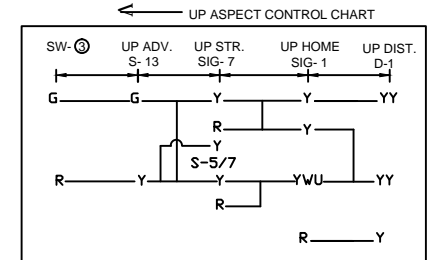


SITAMARHI  
(SMI)  
KM-5.36

DN  
GARHA  
(GARA)  
KM-12.15



INTERLOCKING L-XING  
NO. 36 'C'  
(MANNED)  
CH. 618.00  
KM-58.532 FROM MFP



NOTE:-  
MAGNETO TELEPHONE PROVIDED BETWEEN PANEL CABIN GATE NO. 30, 31, 32, 33, 35, 36, 37.

CLASS OF STATION : B  
STD OF SIG & INTERLOCKING: STD-II (R)

EAST CENTRAL RAILWAY  
SAMASTIPUR DIVISION

STATION WORKING RULE DIAGRAM  
MACL, STD-II (R) CLASS 'B'

DUMRA

SWRD NO. -

DY.CSTE/C-I/SPJ  
2010/RD/06

SR.DSTE/SPJ DSTE/SPJ JE/DRG

TO SUIT SIP NO. ECR/SIP/SPJ/440/2007 ALT-V