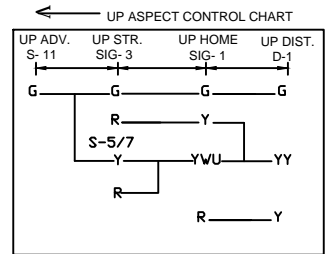
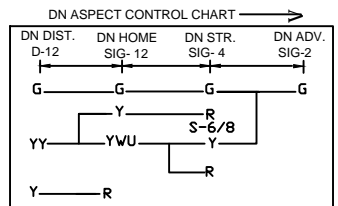
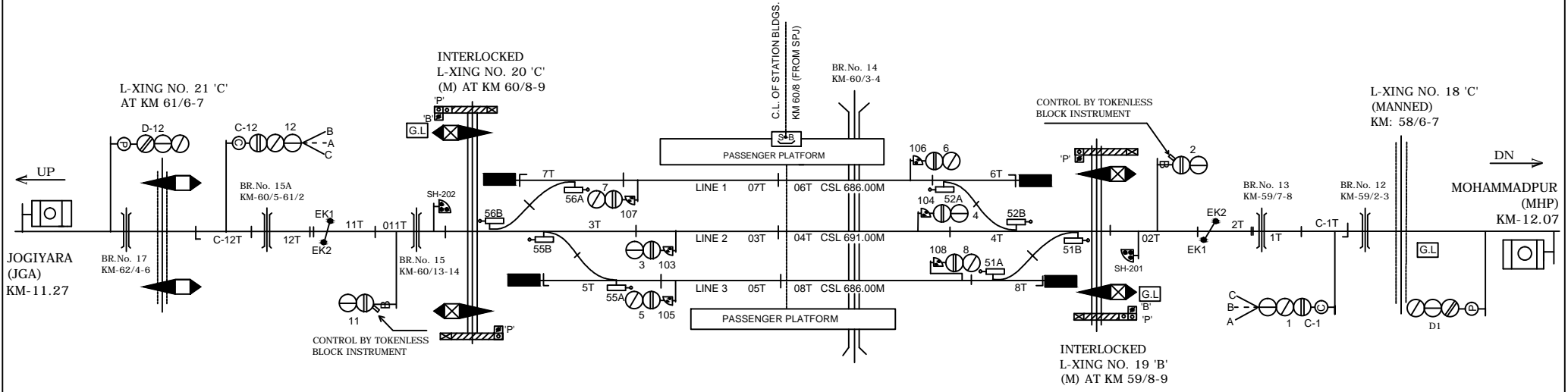
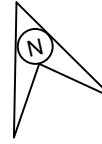


KAMTAUL STATION कमतौल स्टेशन



NOTE:-
MAGNETO TELEPHONE PROVIDED BETWEEN PANEL CABIN GATE NO. 17'C, 18'C, 19'B' BETWEEN MHP-KML AND 20'C, 21'C, 23'C & 24'C BETWEEN KML-JGA.

CLASS OF STATION : B
STD OF SIG & INTERLOCKING: STD-II (R)

EAST CENTRAL RAILWAY SAMASTIPUR DIVISION				STATION WORKING RULE DIAGRAM MACL, STD-II (R), CLASS 'B'	KAMTAUL	SWRD NO. -
	SR.DSTE/SPJ	DSTE/SPJ	JE/DRG	TO SUIT SIP NO. ECR/SIP/SPJ/369/2008 ALT-VII		DY.CSTE/C-I/SPJ 2008/RD/17