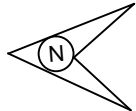
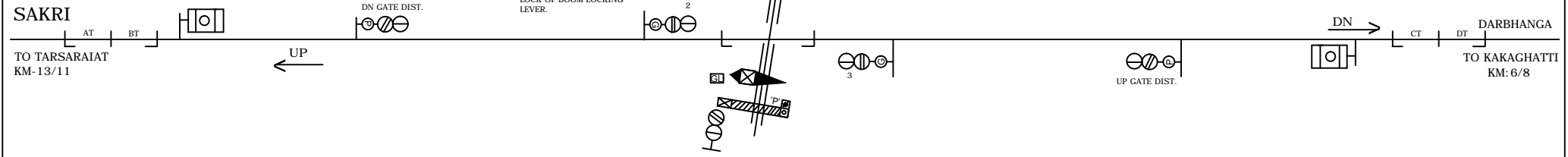


# L.C NO.32'SPL'



INTERLOCKED  
L-XING NO.32  
'SPL' CLASS  
KM-9/15-16

KEY 'K1' WILL GO TOE-TYPE  
LOCK OF BOOM LOCKING  
LEVER.



NOTE:-  
MAGNETO TELEPHONE CONNECTION PROVIDED KAKARGHATTI STATION.

<p>????? ???? ??? <b>E.C. RAILWAY</b> ????????? ??? SAMASTIPUR DIVISION</p>				<p><b>STATION WORKING RULE DIAGRAM</b> OF L-XING No.32'SPL' CLASS BETWEEN KAKARGHATI-TARSARAI AT KM 9/15-16</p>	<p>NOT TO SCALE SWRD NO. SR./DSTE/SPJ 2014(RD)/02</p>
	SR.DSTE/SPJ	DSTE/SPJ	JE/DRG		