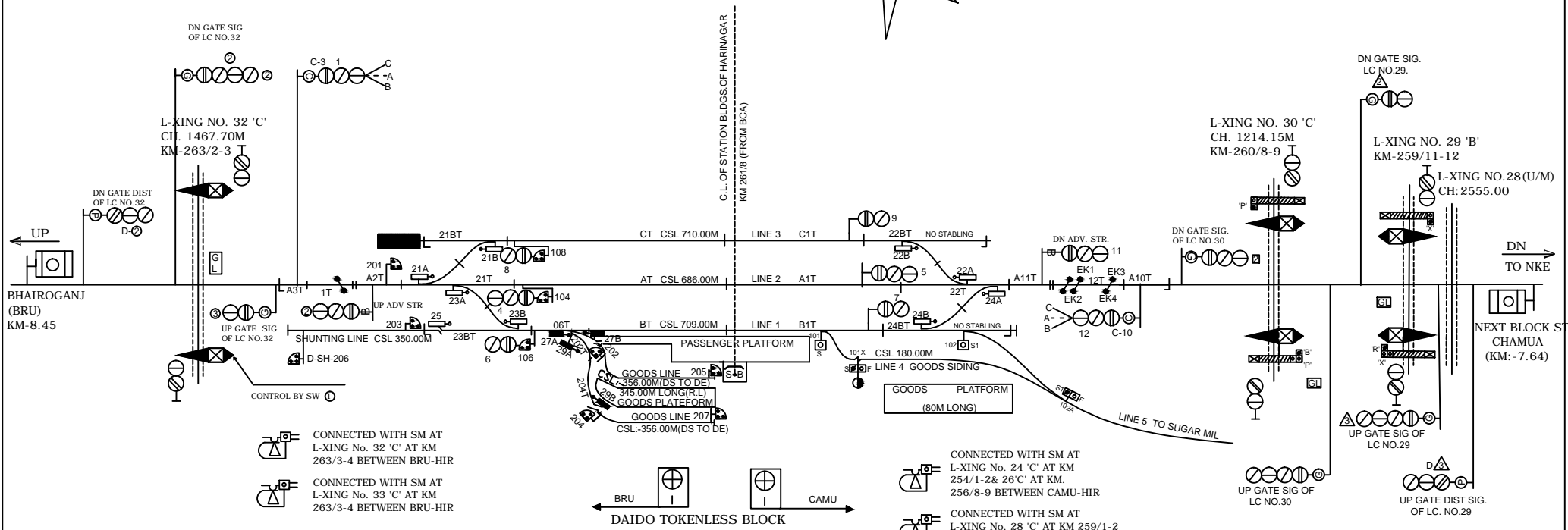
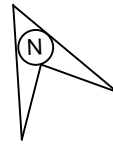


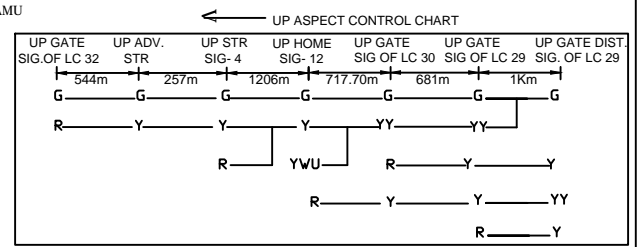
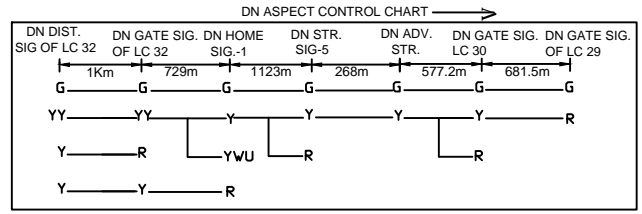
HARINAGAR STATION

हरिनगर स्टेशन



- CONNECTED WITH SM AT L-XING No. 32 'C' AT KM 263/3-4 BETWEEN BRU-HIR
- CONNECTED WITH SM AT L-XING No. 33 'C' AT KM 263/3-4 BETWEEN BRU-HIR

- CONNECTED WITH SM AT L-XING No. 24 'C' AT KM 254/1-2 & 26 'C' AT KM 256/8-9 BETWEEN CAMU-HIR
- CONNECTED WITH SM AT L-XING No. 28 'C' AT KM 259/1-2 & 29 'B' AT KM 259/11-12 BETWEEN CAMU-HIR
- CONNECTED WITH SM AT L-XING No. 30 'C' AT KM 260/8-9 BETWEEN HIR-CAMU



CLASS OF STATION : B
STD OF SIG & INTERLOCKING: STD-II

EAST CENTRAL RAILWAY
SAMASTIPUR DIVISION

STATION WORKING RULE DIAGRAM
MACL, STD-II, CLASS 'B'

HARINAGAR

SWRD NO. -
SR.DSTE/SPJ
2017(RD) / 01

SR.DSTE/SPJ DSTE/SPJ JE/DRG TO SUIT SIP NO. ECR/SIP/SPJ/345/2017, ALT-III