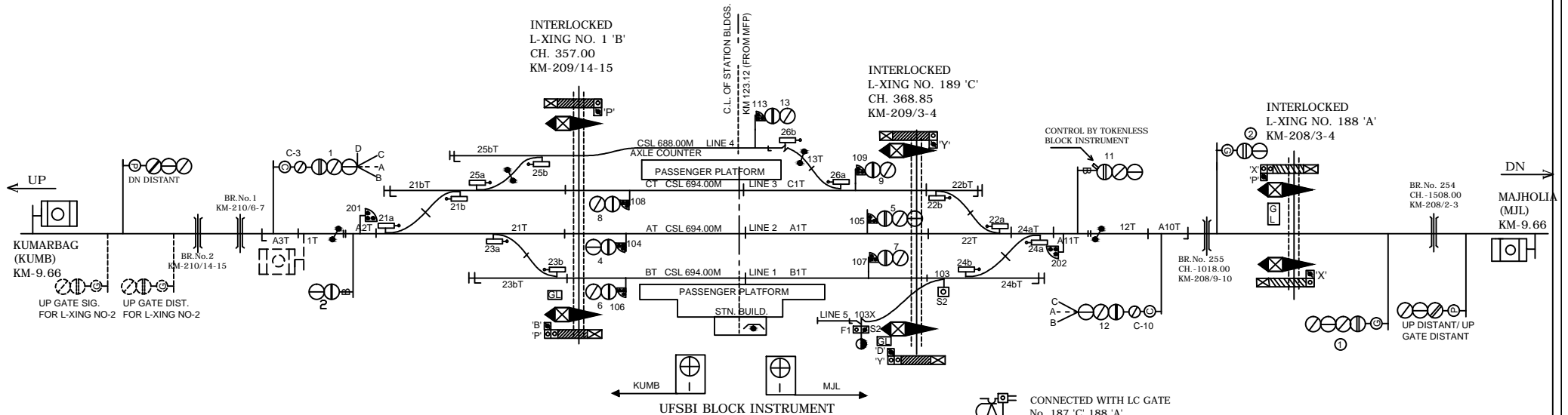
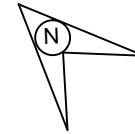




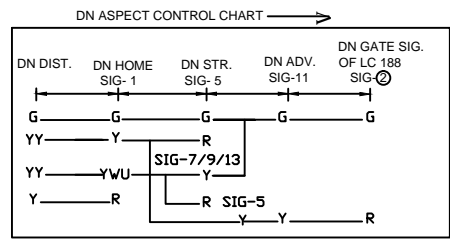
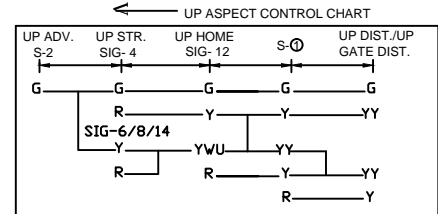


BETTIAH STATION

बेतिया स्टेशन



-  CONNECTED WITH LC GATE No. 187 'C', 188 'A'
-  CONNECTED WITH LC GATE No. 189 'C'
-  CONNECTED WITH LC GATE No. 1 'B'
-  MEGNETO PHONE AT LC GATE No. 2 'B' AT KM 212/02, 2A 'C' BETWEEN BTH-KUMB



CLASS OF STATION : B
STD OF SIG & INTERLOCKING: STD-II (E)

EAST CENTRAL RAILWAY SAMASTIPUR DIVISION				STATION WORKING RULE DIAGRAM MACL, STD-II (E), CLASS 'B'	BETTIAH	SWRD NO. - SR.DSTE/SPJ 2018(RD)/11
	SR.DSTE/SPJ	DSTE/SPJ	JE/DRG	TO SUIT SIP NO. ECR/SIP/SPJ/339/2008 ALT-IX		