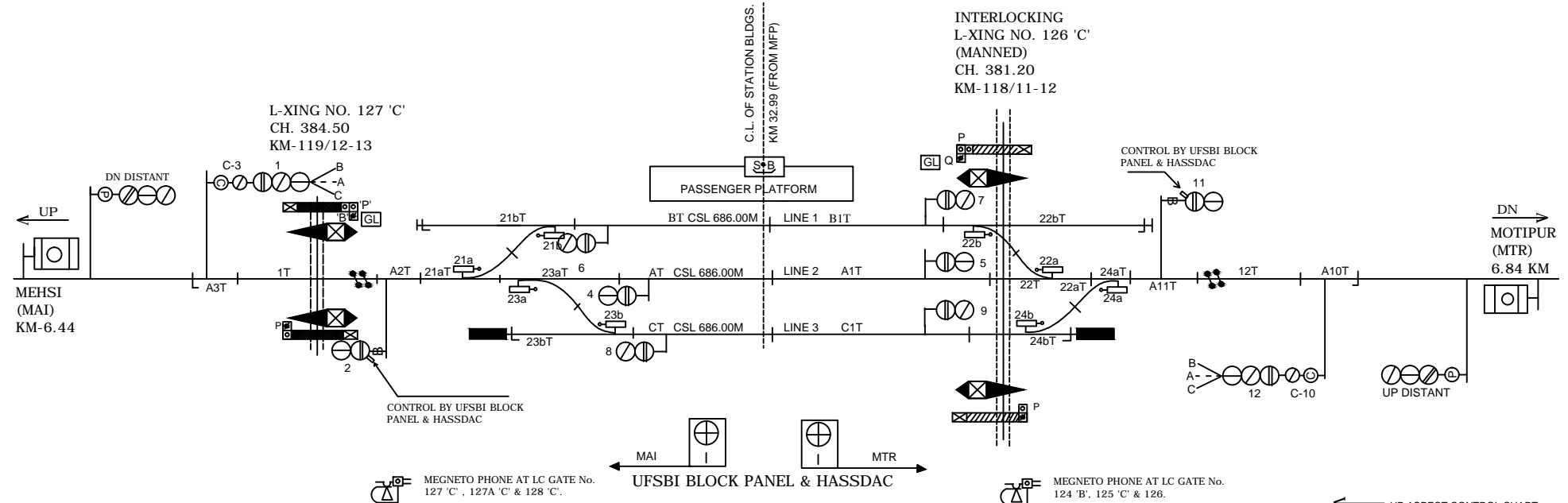
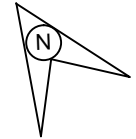


# MAHWAL STATION महवल स्टेशन



INTERLOCKING  
L-XING NO. 126 'C'  
(MANNED)  
CH. 381.20  
KM-118/11-12

L-XING NO. 127 'C'  
CH. 384.50  
KM-119/12-13

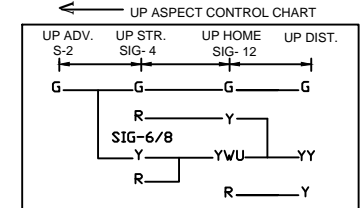
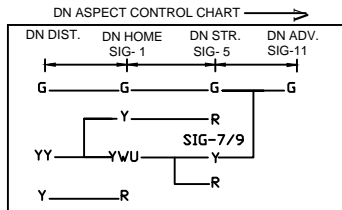
CONTROL BY UFSBI BLOCK  
PANEL & HASSDAC

CONTROL BY UFSBI BLOCK  
PANEL & HASSDAC

MEGNETO PHONE AT LC GATE No.  
127 'C', 127A 'C' & 128 'C'.

MAI MTR  
UFSBI BLOCK PANEL & HASSDAC

MEGNETO PHONE AT LC GATE No.  
124 'B', 125 'C' & 126.



CLASS OF STATION : B  
STD OF SIG & INTERLOCKING: STD-II ®

EAST CENTRAL RAILWAY  
SAMASTIPUR DIVISION

STATION WORKING RULE DIAGRAM  
MACL, STD-II ®, CLASS 'B'

MAHWAL

SWRD NO.-

DSTE/SPJ/2006  
(RD) / 03

SR.DSTE/SPJ

DSTE/SPJ

JE/DRG

TO SUIT SIP NO. ECR/SIP/SPJ/330/2010 ALT-VII