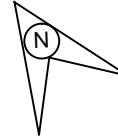
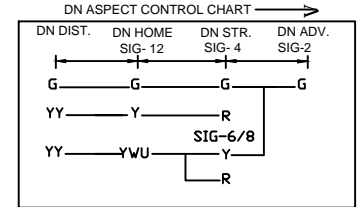
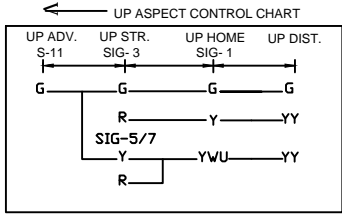
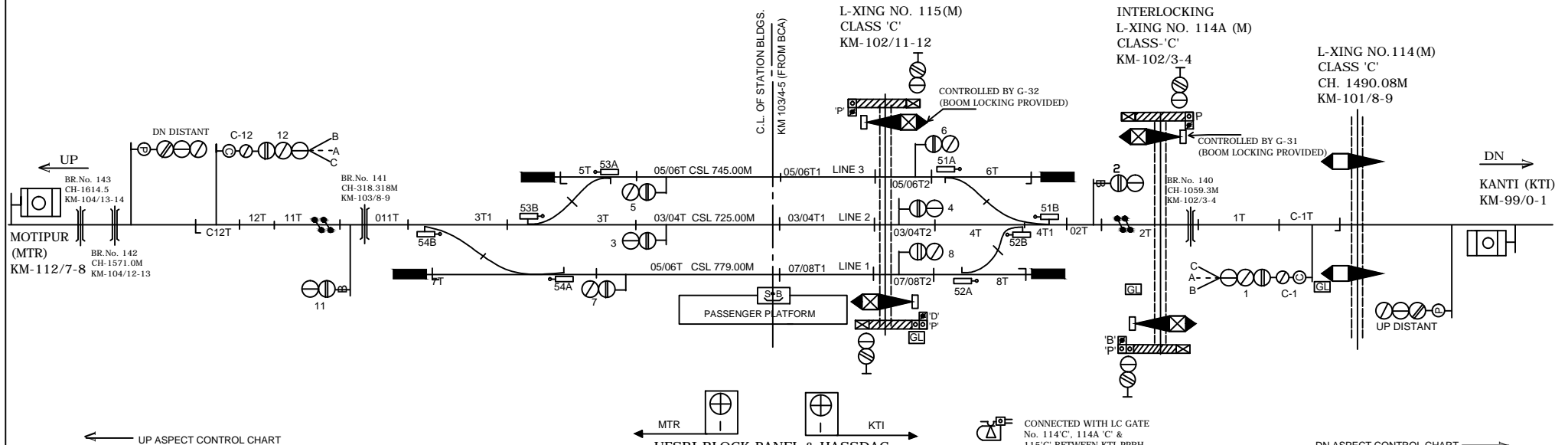
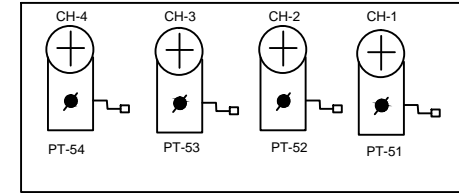


PIPRAHAN पिपराहन स्टेशन



CRANK HANDLES



CLASS OF STATION : B
STD OF SIG & INTERLOCKING: STD-II ②

EAST CENTRAL RAILWAY SAMASTIPUR DIVISION	SR.DSTE/SPJ	DSTE/SPJ	JE/DRG	STATION WORKING RULE DIAGRAM MACL, STD-II ②, CLASS 'B' TO SUIT SIP NO. ECR/SIP/SPJ/463/2009 ALT-VIII	PIPRAHAN	SWRD NO.-
						DY.CSTE/PROJ 2015(RD)/04