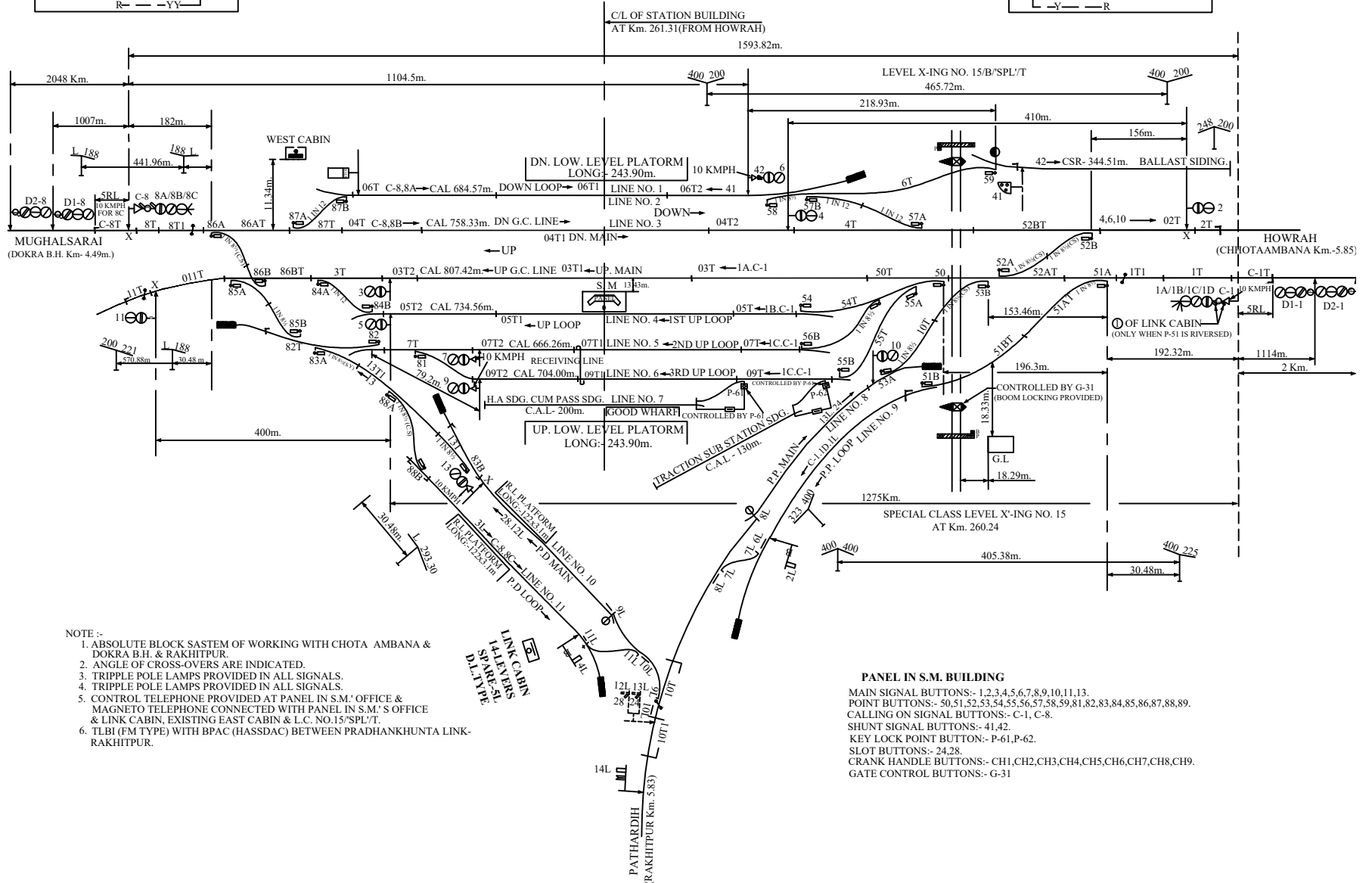
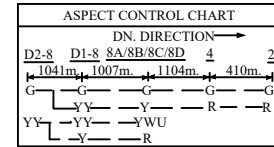
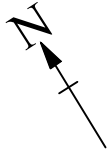
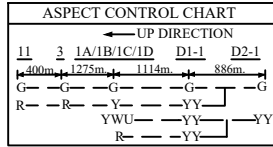


PRADHAN KHUNTA JN. (PKA)

CENTRAL PANEL MACLS/LQ.STD-III .B CLASS

Date of commissioning:-07.12.2004



- NOTE :-**
1. ABSOLUTE BLOCK SYSTEM OF WORKING WITH CHOTA AMBANA & DOKRA B.H. & RAKHITPUR.
 2. ANGLE OF CROSS-OVERS ARE INDICATED.
 3. TRIPPLE POLE LAMPS PROVIDED IN ALL SIGNALS.
 4. TRIPPLE POLE LAMPS PROVIDED IN ALL SIGNALS.
 5. CONTROL TELEPHONE PROVIDED AT PANEL IN S.M.' OFFICE & MAGNETO TELEPHONE CONNECTED WITH PANEL IN S.M.'S OFFICE & LINK CABIN, EXISTING EAST CABIN & L.C. NO.15/SPL/T.
 6. TLBI (FM TYPE) WITH BPAC (HASSDAC) BETWEEN PRADHANKHUNTA LINK- RAKHITPUR.

- PANEL IN S.M. BUILDING**
- MAIN SIGNAL BUTTONS:- 1,2,3,4,5,6,7,8,9,10,11,13.
 POINT BUTTONS:- 50,51,52,53,54,55,56,57,58,59,81,82,83,84,85,86,87,88,89.
 CALLING ON SIGNAL BUTTONS:- C-1, C-8.
 SHUNT SIGNAL BUTTONS:- 41,42.
 KEY LOCK POINT BUTTON:- P-61,P-62.
 SLOT BUTTONS:- 24,28.
 CRANK HANDLE BUTTONS:- CH1,CH2,CH3,CH4,CH5,CH6,CH7,CH8,CH9.
 GATE CONTROL BUTTONS:- G-31