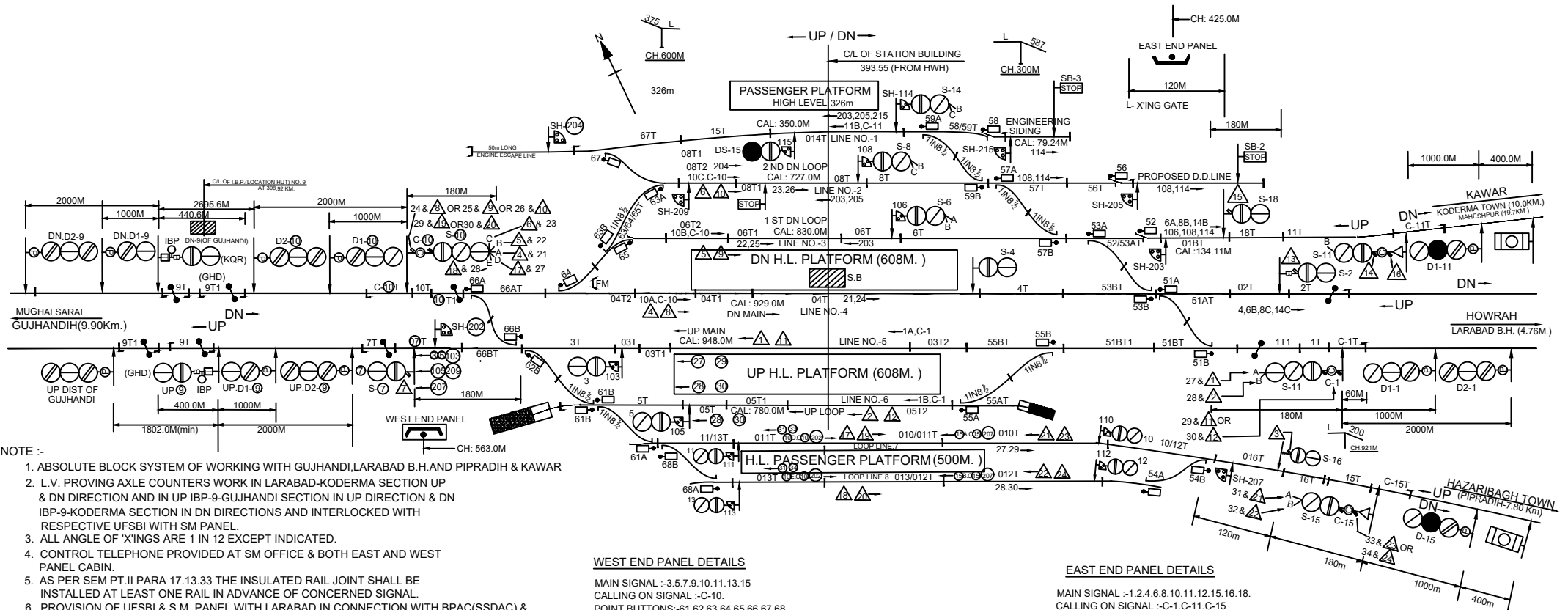


KODERMA (KQR) MACLS 'B' CLASS STD-II(R)



NOTE :-

1. ABSOLUTE BLOCK SYSTEM OF WORKING WITH GUJHANDI, LARABAD B.H. AND PIPRADIH & KAWAR
2. L.V. PROVING AXLE COUNTERS WORK IN LARABAD-KODERMA SECTION UP & DN DIRECTION AND IN UP IBP-9-GUJHANDI SECTION IN UP DIRECTION & DN IBP-9-KODERMA SECTION IN DN DIRECTIONS AND INTERLOCKED WITH RESPECTIVE UFSBI WITH SM PANEL.
3. ALL ANGLE OF 'X'INGS ARE 1 IN 12 EXCEPT INDICATED.
4. CONTROL TELEPHONE PROVIDED AT SM OFFICE & BOTH EAST AND WEST PANEL CABIN.
5. AS PER SEM PT.II PARA 17.13.33 THE INSULATED RAIL JOINT SHALL BE INSTALLED AT LEAST ONE RAIL IN ADVANCE OF CONCERNED SIGNAL.
6. PROVISION OF UFSBI & S.M. PANEL WITH LARABAD IN CONNECTION WITH BPAC(SSDAC) & ALSO PROVISION OF UFSBI WITH BLOCK PANEL/KAWAR SITUATED IN EAST PANEL CABIN.
7. SINGLE LINE TOKENLESS(HANDLE TYPE) WORKING WITH KODERMA - PIPRADIH CONTROLLED.
8. MAGNETO TELEPHONE CONNECTION WITH S.M. OFFICE L.C.NO.1/C/E, 2/C/E, 3/C/E, 4/C/E & 5/C/E OF KODERMA- KAWAR SECTION.

WEST END PANEL DETAILS

MAIN SIGNAL :-3.5.7.9.10.11.13.15
 CALLING ON SIGNAL :-C-10.
 POINT BUTTONS:-61.62.63.64.65.66.67.68
 CRANK HANDLE BUTTONS:-CH1.CH2.CH3.CH4.CH5.CH6
 SLOT CONTRAL :- 27.28.29.30.31.32.33.34
 SHUNT SIGNAL :-103.105.111.113.115.202.204.209.

EAST END PANEL DETAILS

MAIN SIGNAL :-1.2.4.6.8.10.11.12.15.16.18.
 CALLING ON SIGNAL :-C-1.C-11.C-15
 SHUNT SIGNAL:-106.108.110.112.114.203.205.207.215.
 POINTS :- 51.52.53.54.55.56.57.58.59.
 CRANK HANDLE :-CH1.CH2.CH3.CH4.CH5.CH6.CH7.
 SLOT CONTRAL :- 21.22.23.24.25.26.27.28.29.30
 GATE CONTRAL :- G-31.