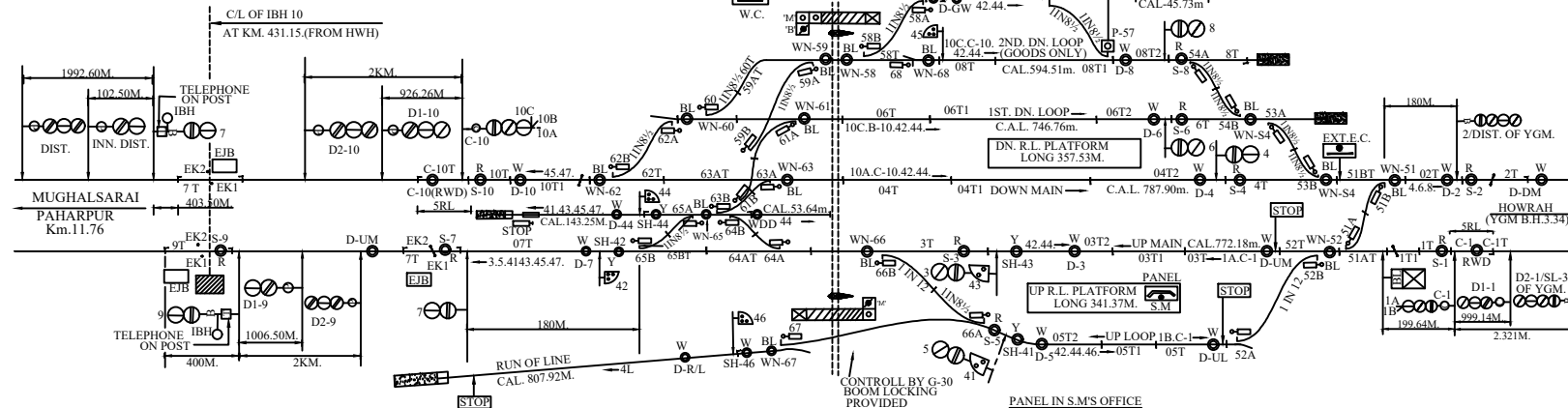
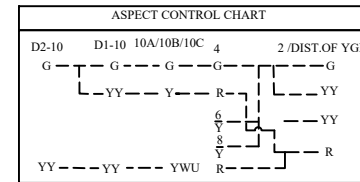
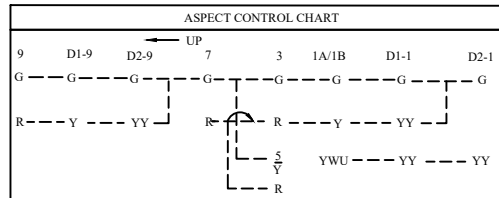


# GURPA (GAP)

## (CENTRAL PANEL ,MACLS. 'B'-CLASS STD-III.)

DATE OF COMMISSIONING:-26.09.2003

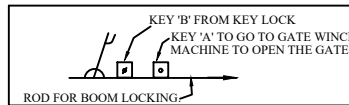


**SPECIAL INSTRUCTION**

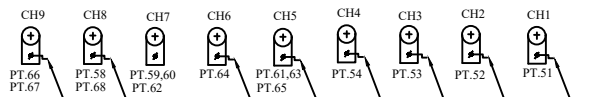
1. DN. HOME SIGNAL NO.10A,10B,10C IS PLACED RIGHT HAND SIDE OF THE TRACK.
2. DN. ADV. STARTER SIG. NO.2 IS COMBINED WITH DN. DIST. SIG. OF YADUGRAM B.H.
3. UP DIST. SIGNAL D2-1 IS COMBINED WITH UP ADVANCED STARTER SIG. OF YADUGRAM B.H.
4. GRADIENT INFRINGEMENT CONDONED WIDE RLY. BOARD'S L. NO. 68/WDO/SD/2 Dt. 1.2.1968.

**NOTE:-**

1. ABSOLUTE BLOCK SYSTEM OF WORKING WITH YADUGRAM B.H. & PAHARPUR.
2. DOUBLE LINE BLOCK INSTRUMENT (SW/HWH TYPE) CONNECTED WITH YADUGRAM B.H. & PAHARPUR- LOCATED AT PANEL ROOM.
3. ALL ANGLE OF X: OVERS ARE 1 IN 12 OR OTHER WISE INDICATED.
4. MAGNETO TELEPHONE PROVIDED AT PANEL ROOM WITH L-XING NO. 37/C.



L.X-ING GATE NO. 37/C



- PANEL IN S.M.'S OFFICE**
- MAIN SIG. BUTTONS - 1,2,3,4,5,6,7,8,9,10.
  - CALLING ON SIG. BUTTONS - C-1,C-10.
  - SUNT SIG. BUTTONS - 41,42,43,44,45,46,47.
  - POINT CONTROLL BUTTONS - 51,52,53,54,58,59,60,61,62,63,64,65,66,67,68.
  - KEY LOCK CONTROLL BUTTONS - P-56,P-57.
  - GATE SWITCH - G.30.
  - CRANK HANDLE SWITCHES - CH.1, CH.2, CH.3, CH.4, CH.5, CH.6, CH.7, CH.8, CH.9

CRANK HANDLE WELDED OR RIVETTED WITH KEY.