

# **East Central Railway**

## **MEMU SHED - JAJ**



**DNR Division**

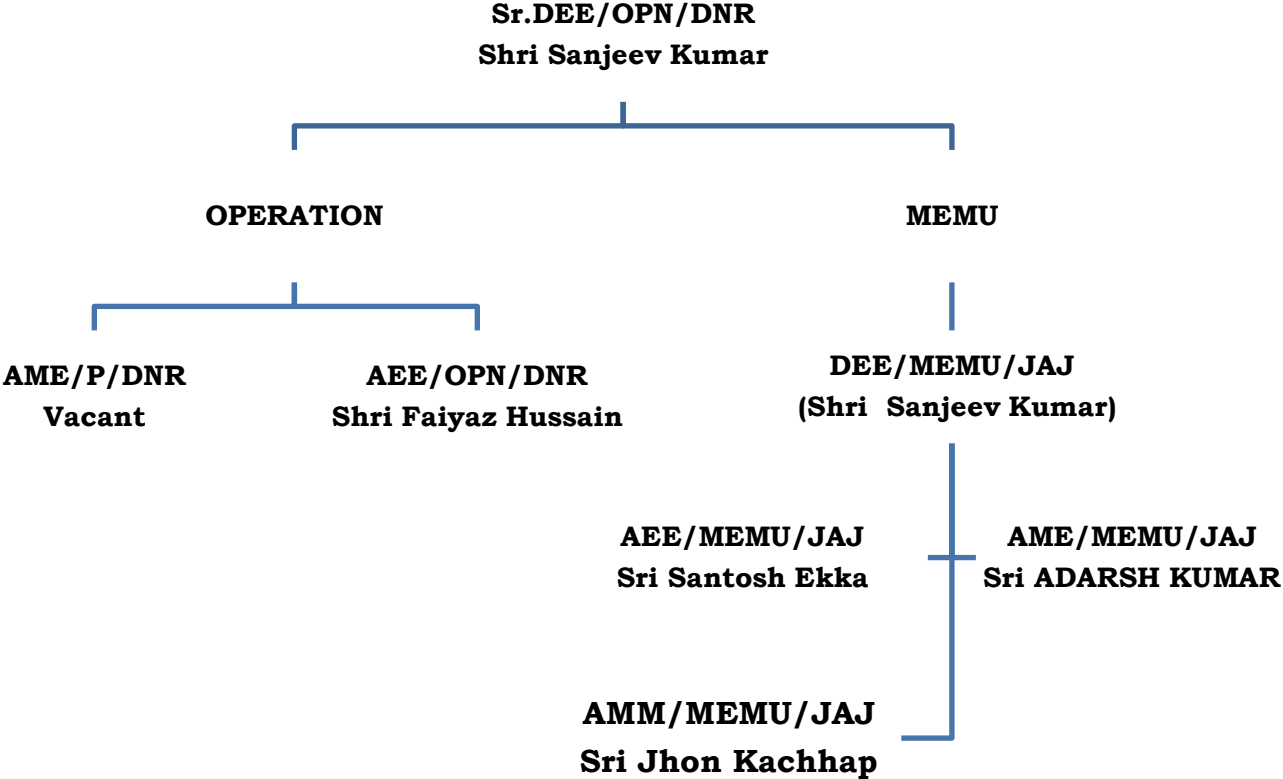
# MEMU SHED JHAJHA

## **Chronology: -**

- **Foundation of MEMU shed JHAJHA** - **14.02.1999**
- **Inauguration of MEMU shed** - **01.10.2003**
- **Arrival of 1<sup>st</sup> MEMU Rake & night inspection** - **13.10.2003**
- **Commissioning of 1<sup>st</sup> MEMU Rake** - **13.01.2004**
- **Weekly inspection of 1<sup>st</sup> MEMU Rake** - **15.02.2004**
- **Monthly inspection of 1<sup>st</sup> MEMU Rake** - **18.10.2004**
- **Commissioning of 25/05 ton EOT crane** - **07.01.2006**
- **Introduction of 16 car Rake** - **25.07.2008**
- **Commissioning of CNC Under Floor Lathe (B.G)** - **27.08.2010**
- **Transformer Changing of 1<sup>st</sup> MEMU done** - **03.04.2013**
- **Commissioning of Speedometer Test Bench** - **20.10.2016**

**ELECTRICAL/TRS BRANCH:**

**ORGANIZATION STRUCTURE :**



# MEMU CAR SHED, JHAJHA

## HOLDING

<b>MOTOR COACH</b>	-	<b>190</b>
<b>TRAILER COACH</b>	-	<b>573</b>
<b>No of Rakes on Run</b>	-	<b>47 Rakes</b>
<b>Total No of Service</b>	-	<b>130 Service/Daily</b>

➤ SECTION OF MEMU CAR SHED, JAJ:

01. PPO
02. Electrical Section
03. Mechanical Section.
04. Pneumatic Section.
05. General Section.
06. Pit Lathe
07. Store
08. Technical Cell of DEE/MEMU

**Type of activity by MEMU/CAR/SHED:**

- Night Inspection.
- Trip Inspection.
- IA (45 days).
- IC (180 days).
- Heavy repair: Transformer changing, Wheel & Axle Changing, Motor Changing etc.

MEMU train services are being provided in following section: -

1. JASIDIH – PNBE
2. PATNA – GAYA
3. PNBE-MGS-ALD
4. PNBE– BJU(Via-MKA&PPTA )
5. GYA-MGS.
6. PNBE-PPTA , PPTA-MFP, MFP-SPJ
7. BSB city – BALIA
8. SPJ-KIR
9. RGD-FUT-RGD
10. IPR-PNBE-IPR

## STAFF POSITION

### MEMU CAR SHED – JAJ

#### MEMU CAR SHED / JAJ STAFF POSITION

29.02.2020

S.N.	CATEGORY	SANCTION	ON ROLL	VACANCY
01	Sr. SECTION ENGINEER	16	13	3
02	JUNIOR ENGINEER	10	9	1
03	MCM	22	23	-1
04	Tech-I	59	53	6
05	Tech-II	24	8	16
06	Tech-III	25	19	6
07	App. Tech-III		3	
08	Khalasi/H. Khalasi	56	60	-4
09	App. Khalasi		4	
10	Office Clerk	1	1	0
11	Armature Winder	1	0	1
12	Carpenter	1	1	0
13	Crane Driver	2	1	1
14	Draft Man	1	0	1
15	Machinist	2	1	1
16	Mill Wright	1	1	0
17	Painter	1	1	0
18	Plant Attendant	1	1	0
19	Shed Comp. Attendant	1	1	0
20	Store Clerk	2	0	2
21	Time Keeper	1	1	0
22	Tool Checker	1	1	0
23	Welder	4	3	1
<b>Total</b>		<b>232</b>	<b>205</b>	<b>27</b>