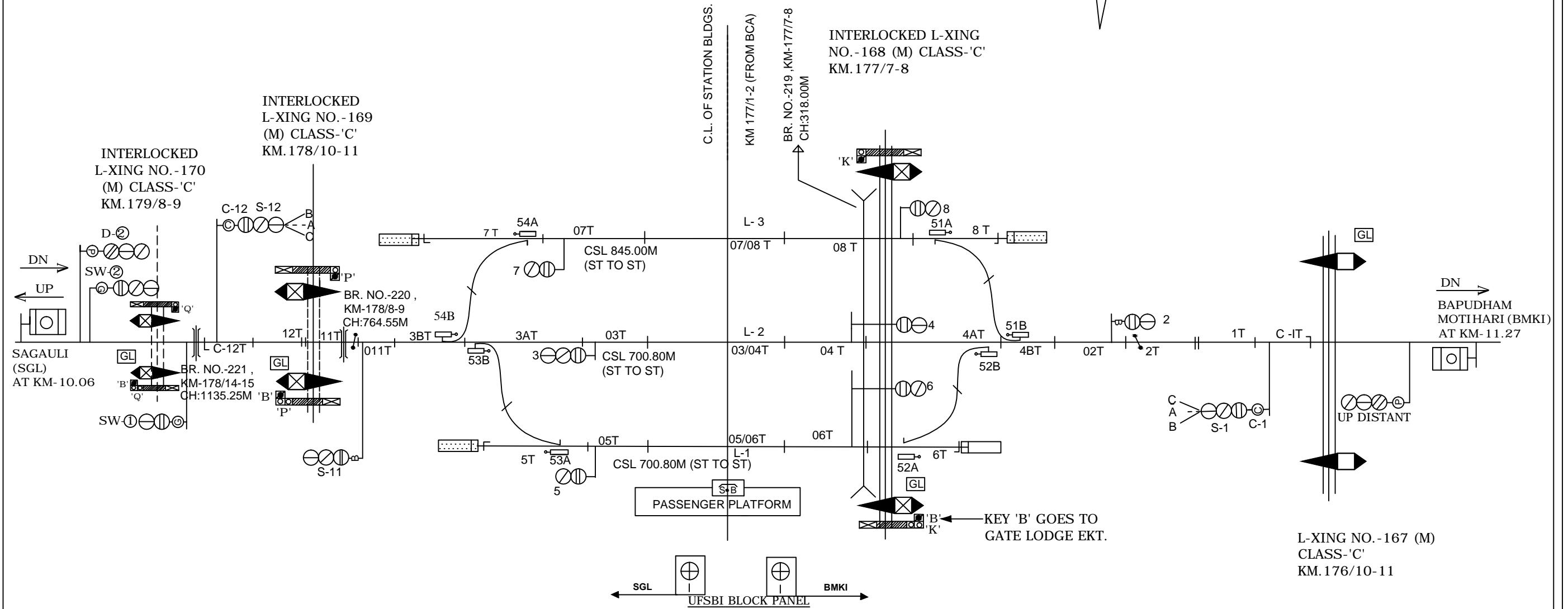
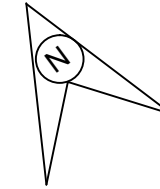


SEMRA STATION सेमरा स्टेशन



NOTE: -

MAGNETO TELEPHONE CONNECTED BETWEEN PANEL CABIN AND GATE NO.165'C',166'C',167'C',168,169'C',170'C' &171'C'.

CLASS OF STATION-CLASS-'B'
STANDAREAD OF INTERLOCKING-STD-II(R)

EAST CENTRAL RAILWAY SAMASTIPUR DIVISION	STATION WORKING RULE DIAGRAM MACL, STD-II (R), CLASS 'B'	SEMRA (SRA)	SWRD NO.-
			SR.DSTE/SPJ 2010(RD)/4
Sr.DSTE/SPJ	DSTE/SPJ	JE/DRG	TO SUIT SIP NO. ECR/SIP/SPJ/336/2010 ALT-F