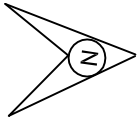
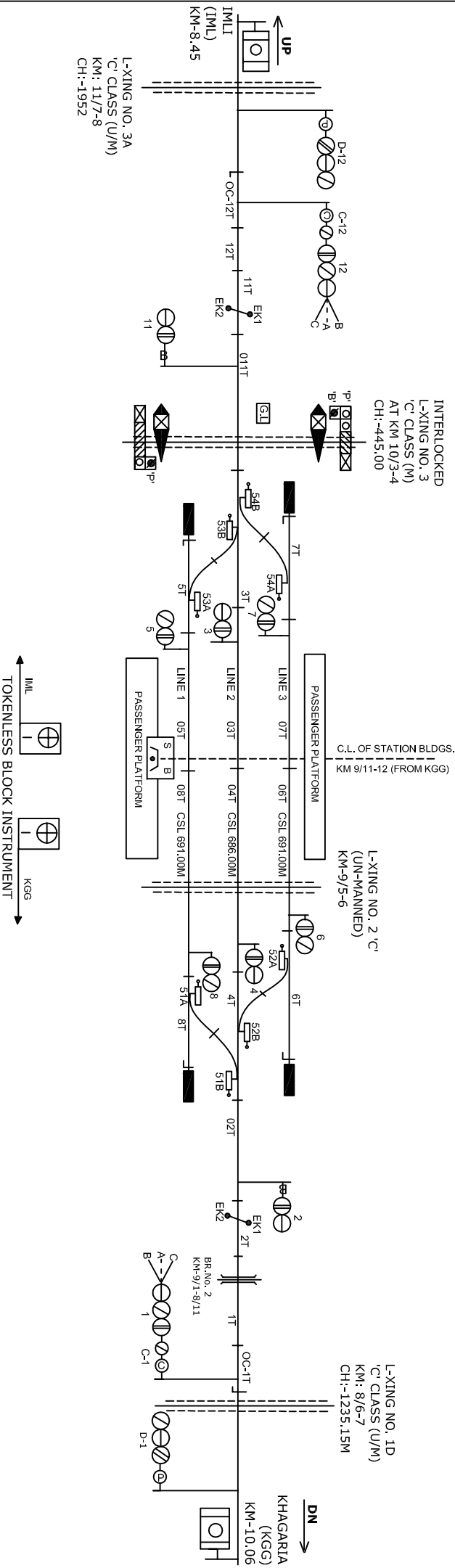


OLAPUR STATION

ओलापुर स्टेशन



NOTE:
MAGNETO TELEPHONE PROVIDED BETWEEN PANEL CABIN & L.C.
GATE NO.:-1'B' BETWEEN OLP-KGG AND 3'C' BETWEEN IMLI-OLP.

CLASS OF STATION : B
STD OF SIG & INTERLOCKING: STD-II (R)

EAST CENTRAL RAILWAY
SAMASTIPUR DIVISION

SR.DSTE/SPJ	DSTE/SPJ	SSE/SIG	TO SUIT SP NO. EGR/SP/401/2006 A.L.T.V
STATION WORKING RULE DIAGRAM MACTL STD-II (R) CLASS 'B'			
OLAPUR			SWRD NO.-
DSTE/W/SPJ/ 2006/RD/22			