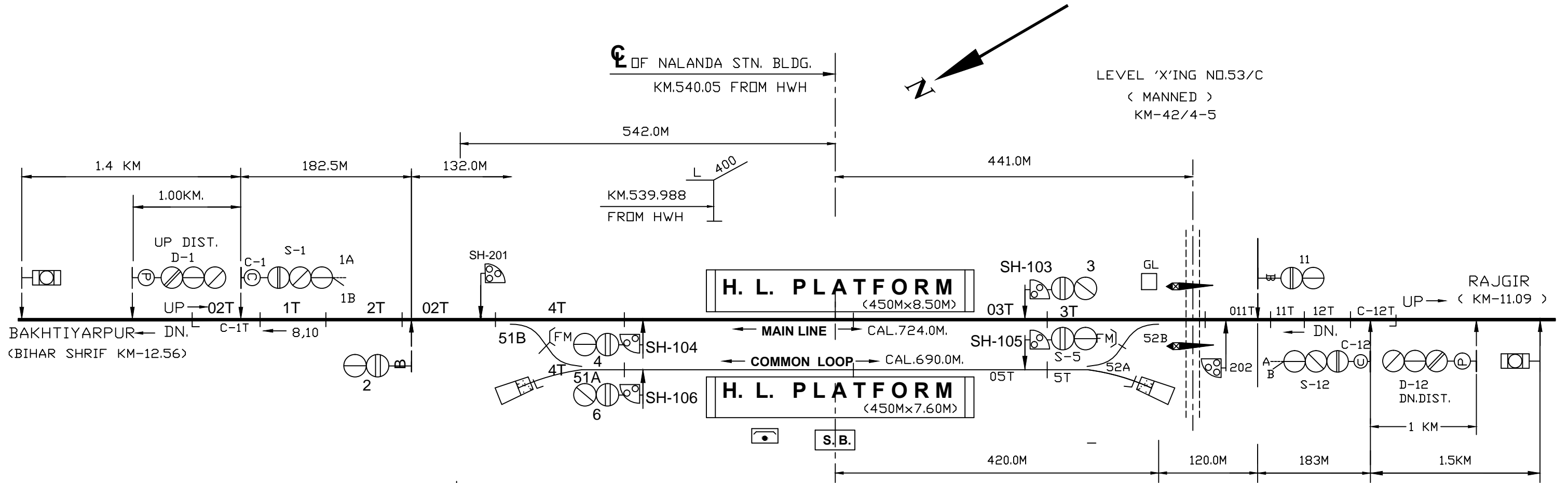


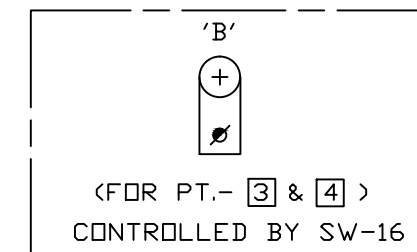
NALANDA (NLD)



PANEL DETAILS

MAIN SIGNAL:- 1.2.3.4.5.6.11.12.
 CALLING ON SIGNAL BUTTON:-C-1.C-112
 POINT BUTTON:- 51.52.
 CRANK HANDLE BUTTON :- CH-1.CH-2
 SHUNT BUTTON:- 103.104.105.106.201.202.
 GATE CONTROL BUTTON:-G-31

LOCATION--2



NOTE:-

1. ABSOLUTE BLOCK SYSTEM OF WORKING WITH RAJGIR & PAWAPURI ROAD.
2. UFSBI SM PANEL & BPAC (SSDAC) WORKING WITH RAJGIR & PAWAPURI ROAD
3. CONTROL TELEPHONE PROVIDED AT SM'S OFFICE & PANEL CABIN.
4. MAGNETO TELEPHONE PROVIDED AT SM'S OFFICE & PANEL CABIN.
5. ANGLE OF X-ING ARE INDICATED.
6. LED LAMPS TO BE USED.
7. MAGNETO TELEPHONE CONNECTED WITH PANEL & LC NO. 59/C/E. 46/C' 48'C' & 53'C'

EAST CENTRAL RAILWAY DANAPUR DIVISION			<i>i.ahmad</i>	PANEL SIGNALLING PLAN MACL, STD-II, CLASS-'B'.	NALANDA (NLD)	SR. NO. BR-5. SI-07465/225F ALT-II
	SR.DSTE/ECR/DNR	ASTE/ECR/DNR	CDM/ECR/DNR			