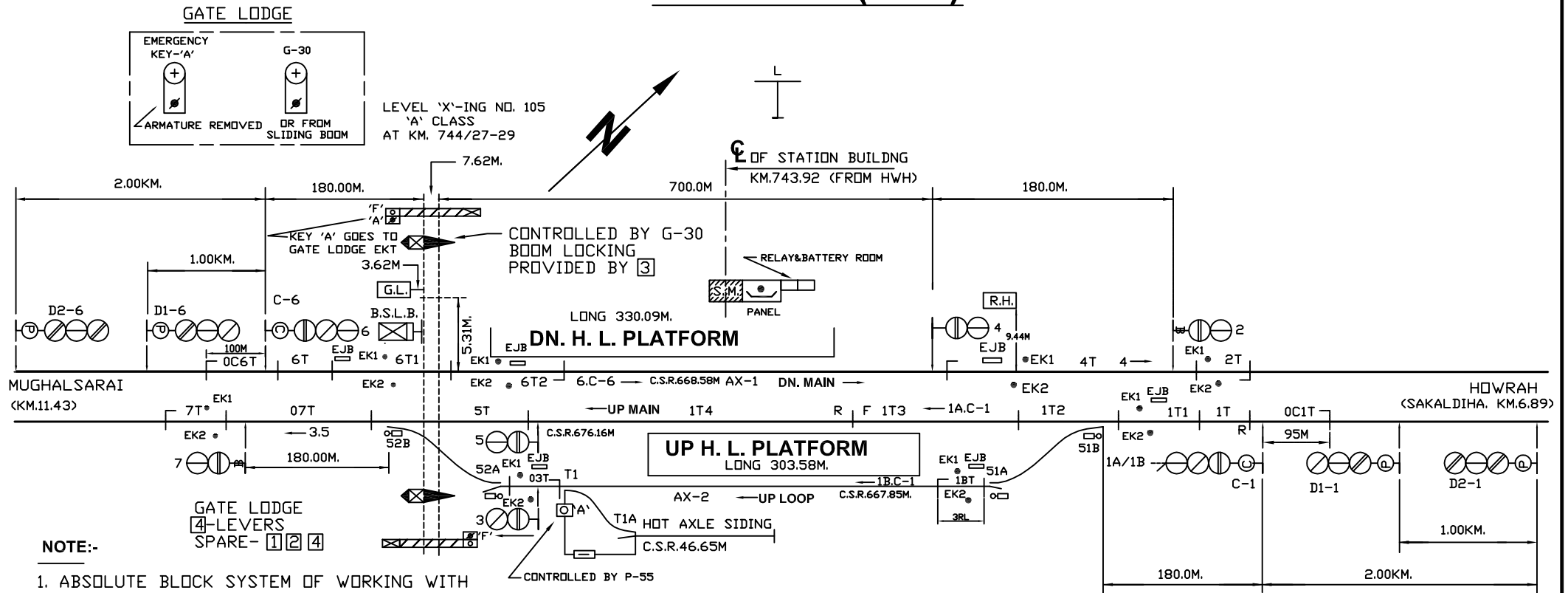


KUCHMAN (KCA)



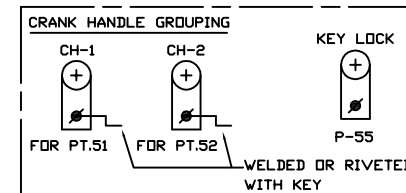
NOTE:-

1. ABSOLUTE BLOCK SYSTEM OF WORKING WITH MUGHALSARAI & SAKALDIHA
2. DOUBLE LINE BLOCK INSTRUMENT CONNECTED WITH MUGHALSARAI & SAKALDIHA LOCATED AT PANEL CABIN
3. CONTROL TELEPHONE IS PROVIDED AT SM'S OFFICE. MAGNETO TELEPHONES ARE CONNECTED BETWEEN SM'S OFFICE & L.C. GATE NO.101.
4. ANGLE OF CROSSOVERS ARE INDICATED.
5. AXLE COUNTER PROVIDED FOR SAKALDIHA & KUCHMAN IN UP & DN DIRECTION AND MUGHALSARAI & KUCHMAN IN UP & DN. DIRECTION AND INTERLOCKED WITH DLBI.
6. TRIPPLE POLE LAMP USED AS PER IRS-S-57/93
7. SLIDING BOOM PROVIDED AT L-XING GATE NO.105'A' AT KM.744/27-29.AS PER IRS-S-57/93

PANEL CABIN IN SM'S OFFICE

MAIN SIGNAL BUTTONS: 1. 2. 3. 4. 5. 6. 7.
 C-ON SIGNAL BUTTONS: C-1. C-6
 POINT CONTROL BUTTONS: 51. 52.
 GATE CONTROL BUTTONS: G-30.
 CRANK HANDLE BUTTONS: CH-1. CH-2.
 KEY LOCK POINT CONTROL BUTTONS: P-55.

AT PANEL CABIN IN SM'S OFFICE



I.AHMAD

| | | | | | | |
|--|-----------------|--------------|-------------|---|----------------------|--|
| EAST CENTRAL RAILWAY DANAPUR DIVISION | | Lahmad | | PANEL SIGNALLING PLAN MACL, STD-II(R), CLASS-'B'. | KUCHMAN (KCA) | SR. NO. ML-53. ECR/SIP/DNR/070/2009 ALT-XI |
| | SR.DSTE/ECR/DNR | ASTE/ECR/DNR | CDM/ECR/DNR | | | |