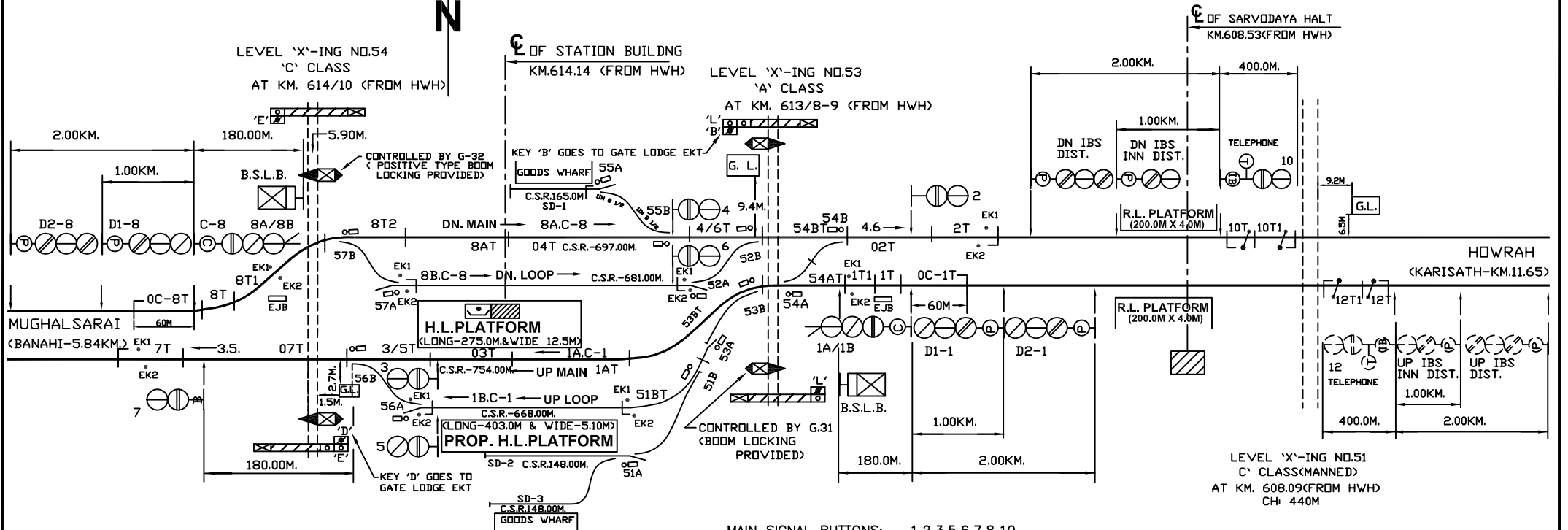
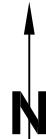
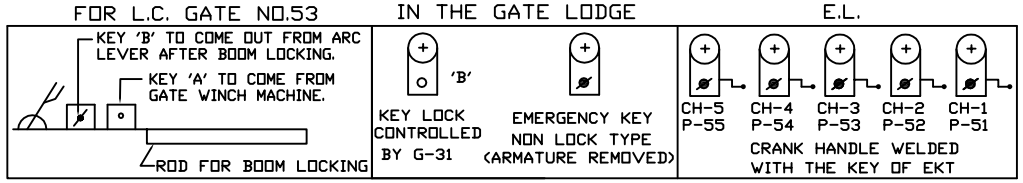
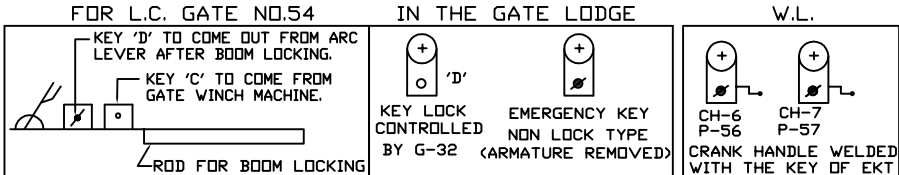


# BIHIYA (BEA)



MAIN SIGNAL BUTTONS: 1,2,3,5,6,7,8,10.  
 CALLING ON SIG.BUTTONS: C-1,C-8.  
 POINT BUTTONS: 51,52,53,54,55,56,57.  
 GATE CONTROL BUTTON: G-31, G-32  
 CRANK HANDLE BUTTONS: CH1 TO CH7.



- NOTE:-
1. ABSOLUTE BLOCK SYSTEM OF WORKING WITH KARISATH AND BANAH.
  2. DOUBLE LINE LOCK & BLOCK INSTRUMENT[LOCK & BLOCK TYPE] WITH KARISATH AND BANAH LOCATED AT PANEL CABIN.
  3. CONTROL TELEPHONE PROVIDED AT PANEL CABIN.
  4. MAGNETO TELEPHONES CONNECTED WITH PANEL CABIN, LC No.53 & 54/C, WLH, ELH AND LC GATE No.51/C & 52/C(BETWEEN BEA & KRS).
  5. ANGLE OF 'X'-INGS ARE INDICATED.
  6. TRIPLE POLE LAMPS TO BE USED.
  7. AXLE COUNTER WORKS BETWEEN KARISATH & BIHIYA IN UP & DN DIRECTION AND BETWEEN BANAH & BIHIYA IN DN & UP DIRECTION FOR L.V. VERIFICATION.
  8. SLIDING BOOM PROVIDED AT LC GATE No. 53/A AT KM. 613/8-9 & LC GATE No. 54/C AT KM 614/10.

|         |                      |  |         |                             |              |   |
|---------|----------------------|--|---------|-----------------------------|--------------|---|
| i.ahmad | EAST.CENTRAL RAILWAY |  | i.ahmad | PANEL SIGNALLING PLAN       | BIHIYA (BEA) | SR. NO. ML-38.<br>ECR/SIP/DNR/085<br>ALT-VI |
|         | DANAPUR DIVISION     |  |         | MACL, STD-III(R), CLASS-'B' |              |   |