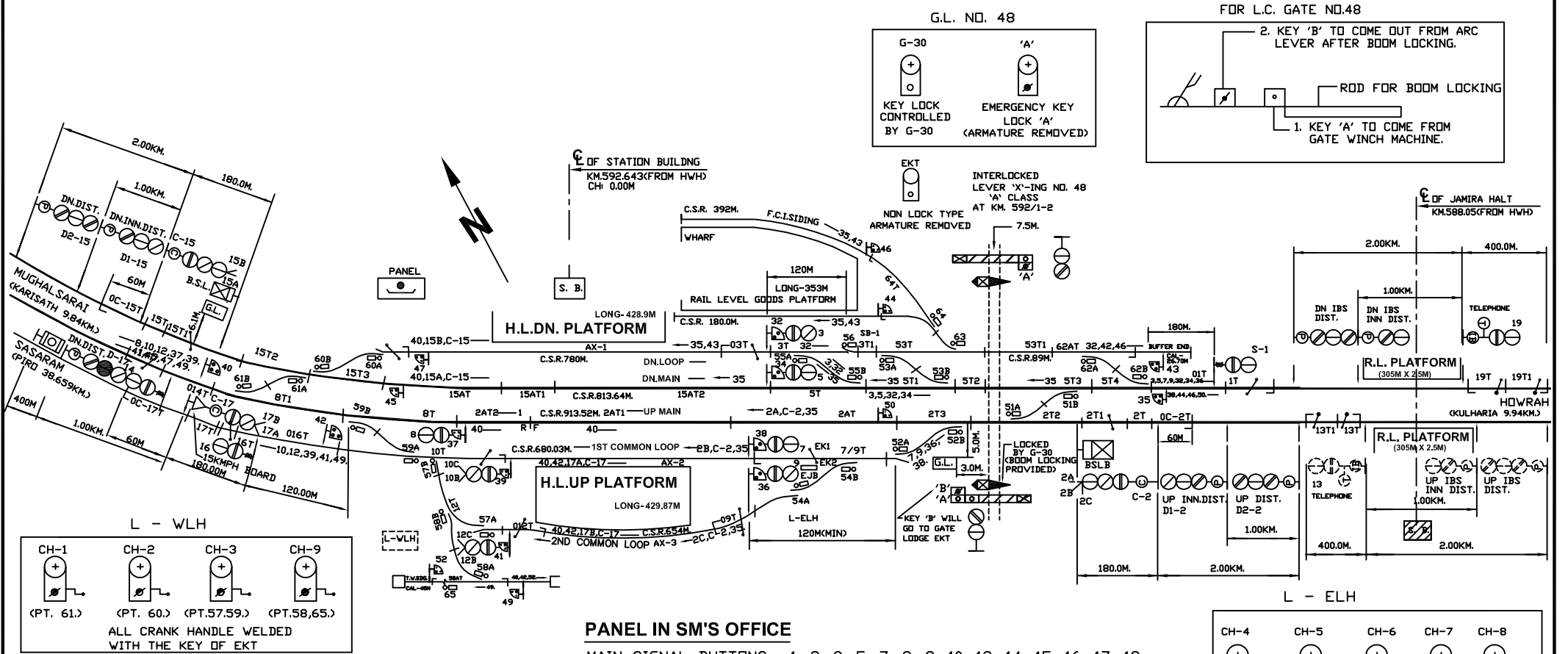
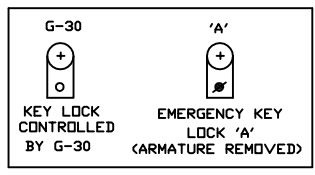


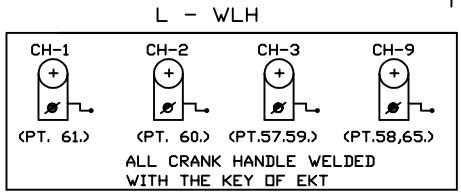
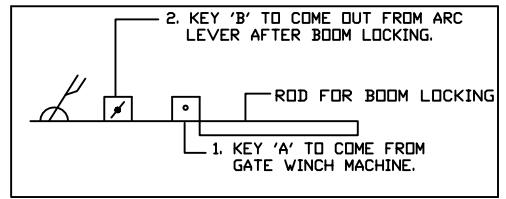
ARA (ARA)



G.L. NO. 48

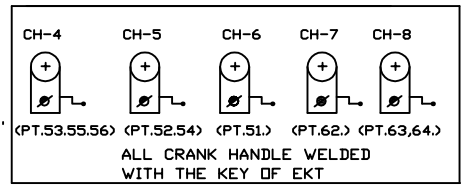


FOR L.C. GATE NO.48



PANEL IN SM'S OFFICE

- MAIN SIGNAL BUTTONS:- 1. 2. 3. 5. 7. 8. 9. 10. 12. 14. 15. 16. 17. 19
- C-DN SIGNAL BUTTONS:- C-2, C-15, C-17
- POINT BUTTONS:- 51. 52. 53. 54. 55. 56. 57. 58. 59. 60. 61. 62. 63. 64. 65.
- CRANK HANDLE BUTTONS:- CH1. CH2. CH3. CH4. CH5. CH6. CH7. CH8, CH9.
- GATE CONTROL BUTTONS:- G-30.
- SHUNT SIGNAL BUTTONS:- 32. 34. 35. 36. 37. 38. 39. 40. 41. 42. 43. 44. 45. 46. 47. 49. 50. 52.



- NOTE:-
- ABSOLUTE BLOCK SYSTEM OF WORKING WITH KULHARIA, KARISATH & PIRO.
 - DOUBLE LINE BLOCK INSTRUMENT MSW/HWH TYPE WITH KULHARIYA & KARISATH, SINGLE LINE TLBI (HANDLE TYPE) WORKING WITH PIRO STATION SITUATED AT PANEL CABIN.
 - CONTROL TELEPHONE PROVIDED AT PANEL CABIN AND MAGNETO TELEPHONE PROVIDED BETWEEN L-ELH SM'S OFFICE, L-WLH GATE No. 48.
 - ANGLE OF 'X'-INGS ARE INDICATED.
 - TRIPLE POLE LAMPS ARE USED.
 - AXLE COUNTER WORKS IN UP DIRECTION WITH IBH, IBH & UP H/S OF ARA & DN DIRECTION WITH IBH, IBH & DN H/S OF ARA FOR LV VERIFICATION AND INTERLOCKED WITH DLBI.
 - AXLE COUNTER WORKS IN UP & DN DIRECTION BETWEEN ARA & PIRO FOR LV VERIFICATION & UNLOCKED WITH TLBI.
 - 16T, 17T ARE STAGGERED BY 1.82M.

EAST CENTRAL RAILWAY DANAPUR DIVISION		<i>i.ahmad</i>	PANEL SIGNALLING PLAN MACL, STD-III(R), CLASS-'B'	ARA (ARA)	SR. NO. ML-36. ECR/SIP/DNR/087/2008 ALT-VI
	SR.DSTE/ECR/DNR	DSTE/ECR/DNR	SE/DRG/DNR		