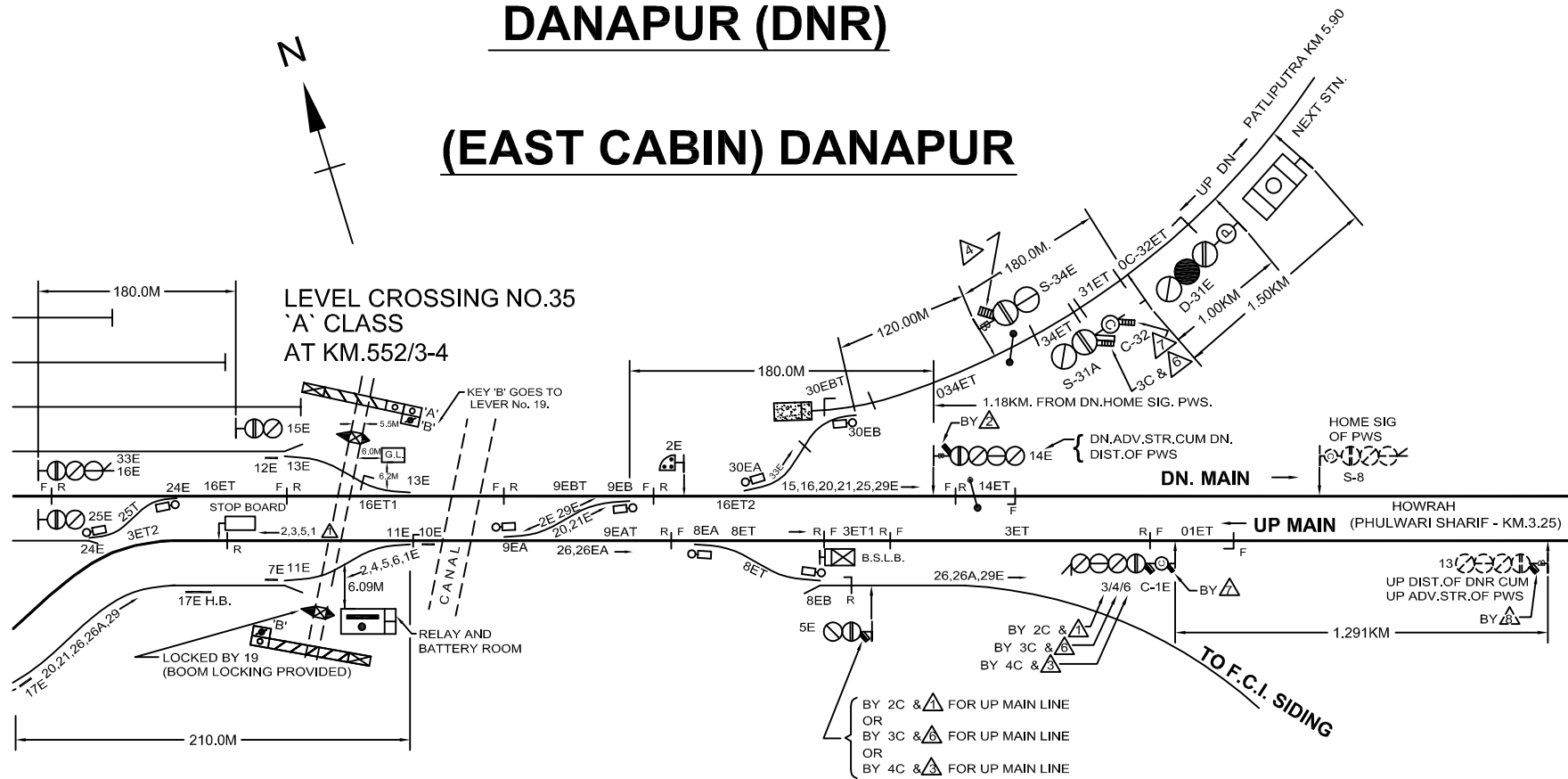
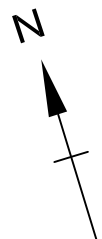


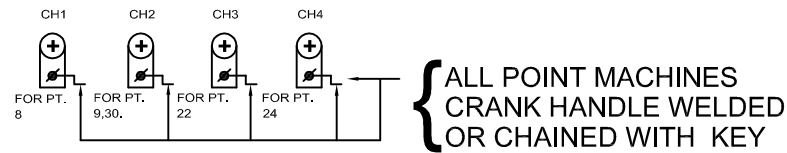
DANAPUR (DNR)

(EAST CABIN) DANAPUR



SATNA CEMENT SIDING
CAL.245.0M

EAST CABIN
 29 - LEVERS EXTENTED UPTO 34 LEVERS
 SPARE - NIL
 DIRECT LOCKING TYPE
 (1935)
 LEVER NO.8,9,10,22, 24 &
 30 HELD ELECTRICALLY



- NOTE:-**
1. ABSOLUTE BLOCK SYSTEM OF WORKING WITH KULHARIA, NEORA AND PHULWARISHARIF.
 2. DOUBLE LINE BLOCK INSTRUMENT MSW/HWH TYPE WITH NEORA AND PHULWARISHARIF, LOCATED AT WEST OUTER CABIN AND EAST CABIN RESPECTIVELY.
 3. CONTROL TELEPHONE PROVIDED AT SM'S OFFICE, WEST OUTER CABIN & EAST CABIN AND MAGNETO TELEPHONE CONNECTED BETWEEN EAST CABIN, EAST CENTRAL CABIN, CENTRAL CABIN, WEST CENTRAL CABIN, WEST CABIN & WEST OUTER CABIN.
 4. ANGLE OF CROSSING OF FOLLOWING ARE I IN 12 AND REST ARE I IN 81/2.
 - i) CROSS OVER No. 15 W (BOTH END) OF WEST CABIN.
 - ii) CROSS OVER No. 28 WC & 42 WC (BOTH END) & 35 WC (MGS END) OF WEST CENTRAL CABIN.
 - iii) CROSS OVER No. 9 C, 10 C & 17 C (MGS END) OF CENTRAL CABIN.
 - iv) CROSS OVER No. 29 EC & 32 EC (MGS END) & 31 (HWH END) OF EAST CENTRAL CABIN.
 - v) CROSS OVER No. 9 E (BOTH END) & 11 E, 13 E, 18 E & 24 E (HWH END) OF EAST CABIN.
 5. TOKENLESS BLOCK INSTRUMENT PROVIDED WITH PATLIPUTRA SITUATED AT EAST CABIN.
 6. TRACK CIRCUIT 34 ET & 31 ET ARE STAGGERED BY 1.82M.
 7. BPAC PROVIDED BETWEEN DNR-PWS IN DN LINE, DNR-NEORA IN UP LINE AND DNR-PATLIPUTRA NEW LINE.
 8. SLIDING BOOM PROVIDED AT LC GATE No. 35/A AT KM 552/3-4 & 36/B AT KM 555/10.

EAST CENTRAL RAILWAY DANAPUR DIVISION		i.ahmad	SIGNALLING PLAN MACL, STD-II(R), CLASS-'B'.	DANAPUR (DNR)	SR. NO. ML-31A ECR/SIP/DNR/092/2004 ALT-VII.
	SR.DSTE/ECR/DNR	DSTE/ECR/DNR	SE/DRG/DNR		