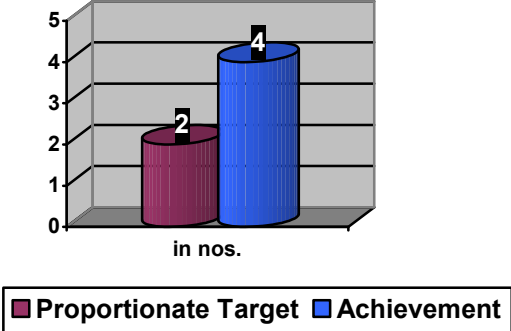
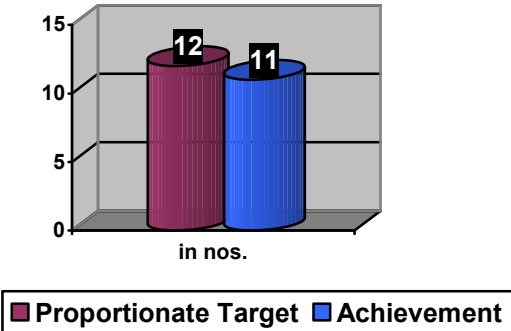
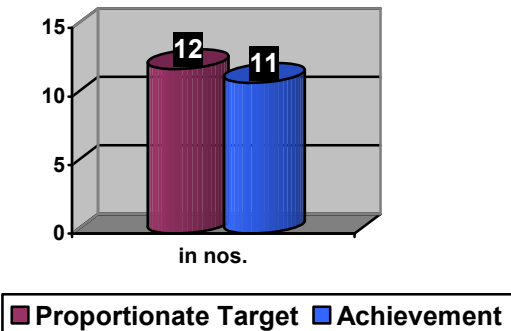
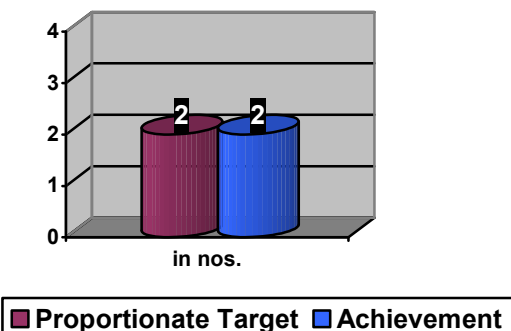


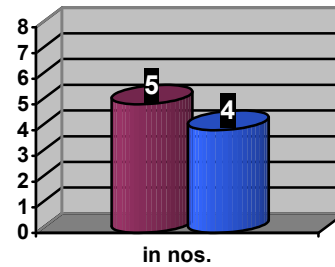
ACHIEVEMENTS 2015-16

ENGINEERING

<p>1. <u>Removal of PSR</u></p> <p>04 Nos. permanent speed restrictions have been removed during the year against the annual target of 03 Nos.</p>	 <p>A 3D bar chart comparing 'Proportionate Target' and 'Achievement' for 'Removal of PSR'. The y-axis is labeled 'in nos.' and ranges from 0 to 5. The 'Proportionate Target' bar (maroon) has a value of 2, and the 'Achievement' bar (blue) has a value of 4. A legend below the chart identifies the bars.</p> <table border="1"><thead><tr><th>Category</th><th>Value</th></tr></thead><tbody><tr><td>Proportionate Target</td><td>2</td></tr><tr><td>Achievement</td><td>4</td></tr></tbody></table>	Category	Value	Proportionate Target	2	Achievement	4
Category	Value						
Proportionate Target	2						
Achievement	4						
<p>2. <u>Manning of Level Crossings</u></p> <p>11 Nos. unmanned level crossings have been manned during the year against the proportionate target of 12 Nos.</p>	 <p>A 3D bar chart comparing 'Proportionate Target' and 'Achievement' for 'Manning of Level Crossings'. The y-axis is labeled 'in nos.' and ranges from 0 to 15. The 'Proportionate Target' bar (maroon) has a value of 12, and the 'Achievement' bar (blue) has a value of 11. A legend below the chart identifies the bars.</p> <table border="1"><thead><tr><th>Category</th><th>Value</th></tr></thead><tbody><tr><td>Proportionate Target</td><td>12</td></tr><tr><td>Achievement</td><td>11</td></tr></tbody></table>	Category	Value	Proportionate Target	12	Achievement	11
Category	Value						
Proportionate Target	12						
Achievement	11						
<p>3. <u>Manning of Level Crossings</u></p> <p>11 Nos. unmanned level crossings have been manned during the year against the proportionate target of 12 Nos.</p>	 <p>A 3D bar chart comparing 'Proportionate Target' and 'Achievement' for 'Manning of Level Crossings'. The y-axis is labeled 'in nos.' and ranges from 0 to 15. The 'Proportionate Target' bar (maroon) has a value of 12, and the 'Achievement' bar (blue) has a value of 11. A legend below the chart identifies the bars.</p> <table border="1"><thead><tr><th>Category</th><th>Value</th></tr></thead><tbody><tr><td>Proportionate Target</td><td>12</td></tr><tr><td>Achievement</td><td>11</td></tr></tbody></table>	Category	Value	Proportionate Target	12	Achievement	11
Category	Value						
Proportionate Target	12						
Achievement	11						
<p>4. <u>Closure of Level Crossings</u></p> <p>02 Nos. level crossings have been closed during the year against the proportionate target of 02 Nos.</p>	 <p>A 3D bar chart comparing 'Proportionate Target' and 'Achievement' for 'Closure of Level Crossings'. The y-axis is labeled 'in nos.' and ranges from 0 to 4. The 'Proportionate Target' bar (maroon) has a value of 2, and the 'Achievement' bar (blue) has a value of 2. A legend below the chart identifies the bars.</p> <table border="1"><thead><tr><th>Category</th><th>Value</th></tr></thead><tbody><tr><td>Proportionate Target</td><td>2</td></tr><tr><td>Achievement</td><td>2</td></tr></tbody></table>	Category	Value	Proportionate Target	2	Achievement	2
Category	Value						
Proportionate Target	2						
Achievement	2						

5. Interlocking of Level Crossing

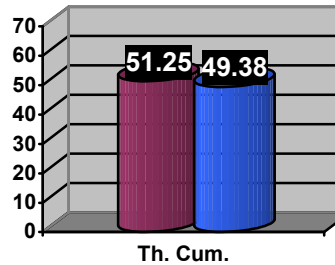
04 Nos. level crossings have been interlocked during the year against the proportionate target of 05 Nos.



■ Proportionate Target ■ Achievement

6. Ballast supply

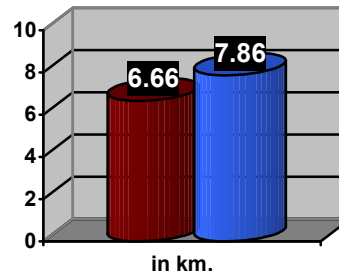
49.38 th Cum. of Ballast has been supplied and trained out up to the month of Nov'15 against the proportionate target of 51.25 th Cum. during the year.



■ Proportionate Target ■ Achievement

7. TRR(S)

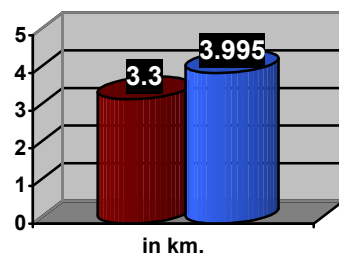
7.86 km TRR(S) have been done up to the month of Nov'15 against the proportionate target of 6.66 which is 18.01 % more.



■ Proportionate Target ■ Achievement

8. TSR(S)

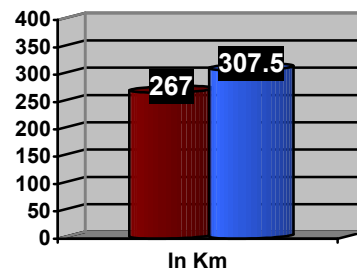
3.995 km TS R(S) has been done up to the month of Nov'15 against the proportionate target of 3.3 which is 21.06 % more.



■ Proportionate target ■ Achievement

9. ERC Greasing

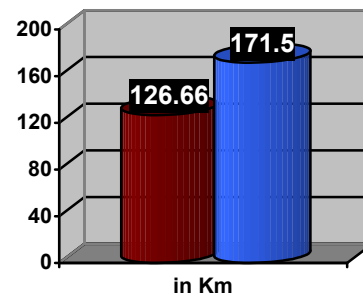
307.5 Km greasing of ERC has been done up to the month of Nov'15 against the proportionate target 267 Km which is 15.16% more.



■ Proportionate target ■ Achievement

10. Painting of Rail

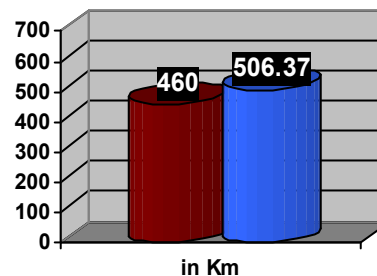
Painting of rail in corrosion prone area of 171.50 track km has been done against the proportionate target of 126.66 km which is 35.40% more as compared to proportionate target.



■ Proportionate target ■ Achievement

11. USFD performance

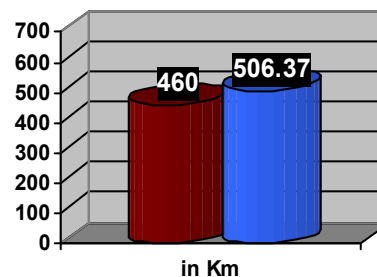
Rail and weld of 2437.71 km of track have been ultrasonically tested by USFD machine up to the month of Nov'15 against the proportionate target of 2925 km of track.



■ Proportionate target ■ Achievement

12. Plain Track Tamping

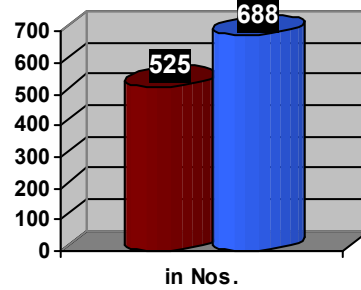
506.37 Km track have been tamped up to the month of Nov'15 against the proportionate target of 460 Km which is 10.08% more.



■ Proportionate target ■ Achievement

13. AT Weld

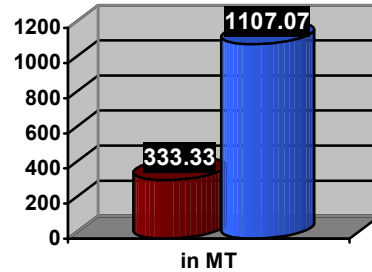
688 nos. AT welding has been done up to the month of Nov'15 against the proportionate target of 525 nos. which is 31.04% more.



■ Proportionate target ■ Achievement

14. Scrap

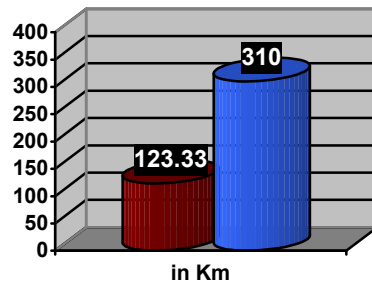
1107.04 MT of scrap has been offered to HQ against the proportionate target of 333.33 MT which is 232.11% more.



■ Proportionate target ■ Achievement

15. Toe load measurement

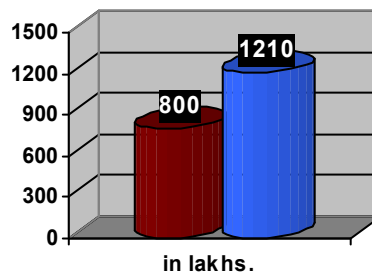
Toe load measurement of ERC has been done in the length of 310 track km against the proportionate target of 123.33 km which is 151.35% more.



■ Proportionate target ■ Achievement

16. Sundry Earning

Earning of 1210 lakhs has been realized up to the month of Nov'15 against the proportionate target of 800 lakhs which is 51.25 % more. With this Division has achieved Annual Target.



■ Proportionate target ■ Achievement

17. Raising of speed on loops:

- DBG-SMI Section has been raised from 15 kmph to 30 kmph on 31.05.15 in order to improve running of trains by reducing transit time on loops.
- SGL-RXL Section has been raised from 15 kmph to 30 kmph on 26.08.15 in order to improve running of trains by reducing transit time on loops.
- SMI-RXL Section has been raised from 15 kmph to 30 kmph on 26.08.15 in order to improve running of trains by reducing transit time on loops

18. Rebuilding of Distress Bridges

Br.No-336 having PSR of 50 KMPH between Bhairoganj-Kharpokhra in NKE-PNYA section and Br.No-190 having PSR of 30 KMPH between Jivdhara-Pipra in MFP-SGL section have been rebuilt and PSR removed.



New Br No-336



New Br No-190

19. Construction of FOB:

Out of Total target of 7 Foot over Bridges Division has completed FOB at NKE, ROA & JNR.



NKE



ROA



JNR

20. PF Shelter:

Total 7 bay PP Shelter (2 bay each at Bugha, Chakia & Jay Nagar and One bay at Kharpokhra) has already been provided against the Annual Target of 6 No



Bugha



Chakia

21. Cover Shed at Samastipur



About 9m wide and 90m Long Cover shed has been provided between Booking Counter and FOB on South Side Circulating Area of Samastipur.

22. 2nd Passenger Platform at Motipur



2nd Low Level Platform completed at Motipur. On this Platform one old abandoned Goods Shed has been converted into waiting Hall.

23. Commissioning of 3rd Running line at Semra station

To augment traffic handling facilities, 3rd running line with new panel interlocking has been commissioned at Semra in MFP-SGL section on 11th Sep-2015. This traffic facility work was sanctioned in year 2008-09.



24. Development of Adarsh Station

Work in connection of development of Janakpur Road station as Adarsh station has been completed.

25. Elimination of Deficiency in MEA

- Low cost shed 36 Nos. at different stations have been provided in order to eliminate deficiency in MEA (GRNA-04 Nos, KWC-06Nos, GRH-09Nos, RRNH-06Nos, JMM-06 Nos & CAO-05Nos)
- At the 17 different stations, total 120 Nos. pre-cast RCC benches have been provided in order to recoup deficiencies in seating arrangement under MEA (GRNA- 04, KWC-06, GRH-04, RRNH-04 , JMM-04 , CAO-06 , PPK-04 , ADX-06 , NKU-04 , RXL-06 , BLV-08 , KNLI-06 , STF-08 , PSPH-06 , MRJD-08, GKA-08 & BGU-08 Nos.)
- At the two (02 nos.) stations (KJI & KML) lavatories has been provided in order to eliminate deficient items under MEA.
- At Roseraghat FOB has been provided in order to eliminate deficiency in MEA.
- All the deficiencies in MEA at KTI, MAI, PPA, JDR, BTH & BUG stations has been eliminated making zero deficiencies at these stations.
- Deficiencies under MEA at all the 13 stations in section SHC-BNKI has been eliminated making zero deficiencies

25. Construction of Staff Quarters

Total 60 Unit Type-I, 20 Units Type-II, 1 Unit Type-III, IV & V Completed in the Division.

26. Work for Staff Welfare

- Roof treatment work has been taken up in large scale in the division and quarters at NKE, SHC and SPJ has been completed. Similarly, work of service building has been taken up.
- Improvement work of road in major colonies like NKE, SPJ and SHC
- Total 8 Deep Tube well has been commissioned at different location of the Division.

27. Other Misc. Works

- RPF barrack at Bapudham Motihari has been completed.