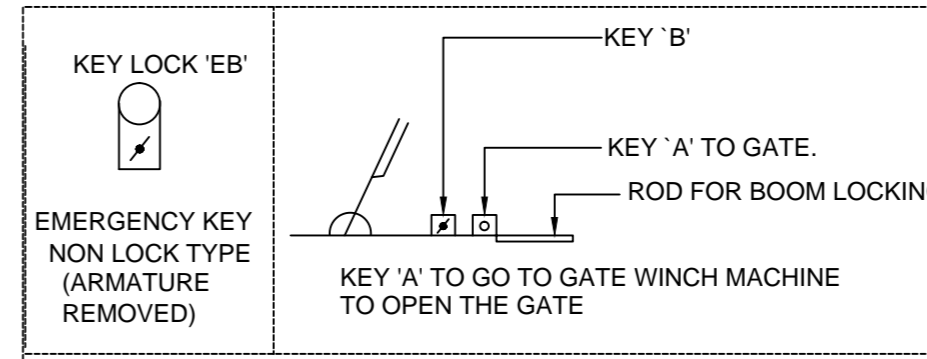


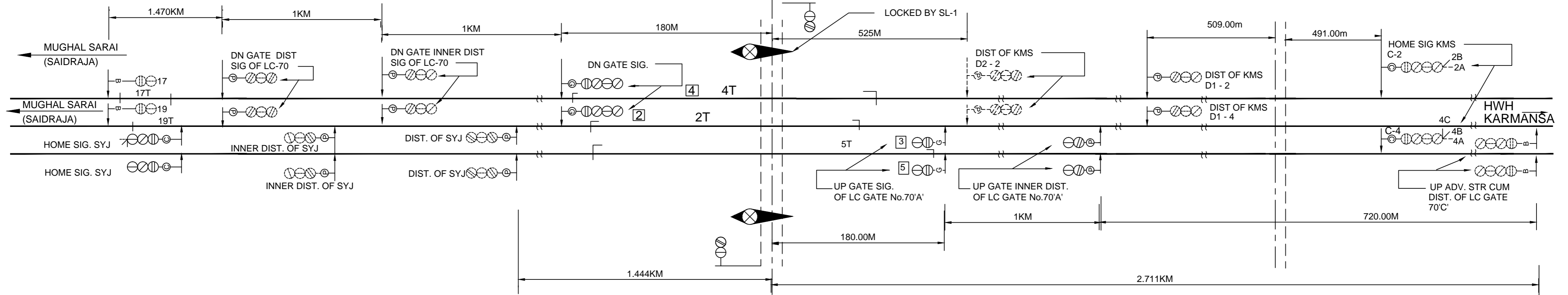
**SIGNAL INTERLOCKING PLAN OF
L-XING No.70 'A' CLASS BETWEEN
SAIDRAJA - KARMNASA
AT Km 644/5-7**

← UP DN →

L-XING GATE NO.70 'A'(MANNED)
AT Km:-644/5-7



SL-1 (N) RELEASES KEY 'B' ELECTRICALLY



6 WAY SM'S SLIDE BOX

DN GATE SIG.	4
DN GATE SIG.(REV)	4
UP GATE SIG.(REV)	4
UP GATE SIG.	5
GATE KEY	1
SPARE	6

