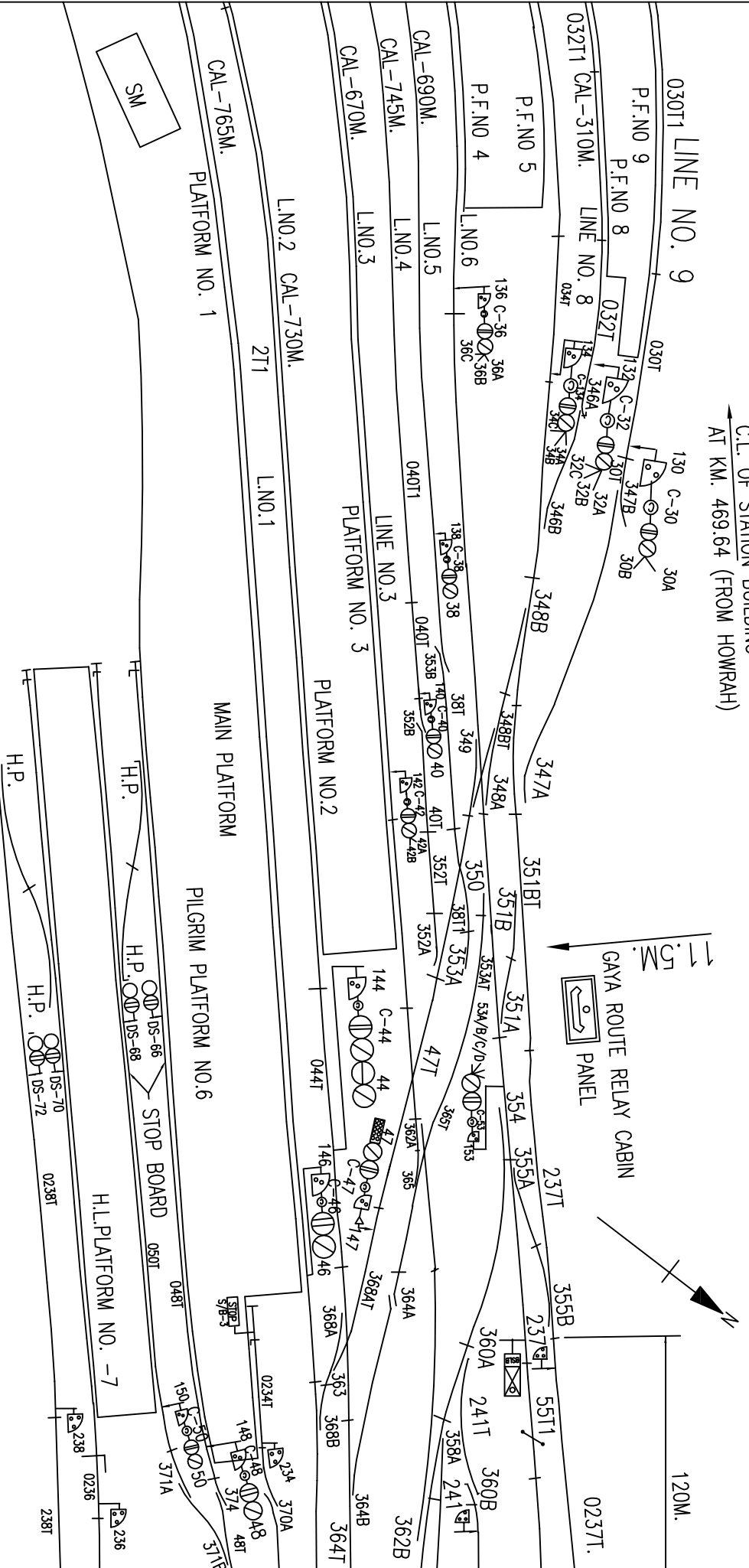


C.L. OF STATION BUILDING
AT KM. 469.64 (FROM HOWRAH)

SH. NO. 31(F) / 32



8. THIS DRAWING IS NOT TO SCALE DISTANCES GIVEN IN THE DRAWING TO BE TAKEN.
9. ALL CALLING ON TRACK CIRCUIT WILL BE MORE THEN 65MS.
10. ELECTRICALLY LIT STOP BOARD TO BE PROVIDED AT BUFFER OF PILGRIM PLATFORM.
11. GATE NO 71A(KEY-G-282)WILL FREE AFTER CLEARANCE OF 58T1.58T2.&58T3.

1. ABSOLUTE BLOCK WORKING WITH KASTA, MANPUR&CHAKAND
2. BOUBLE LINE BLOCK INSTRUMENT SGE TYPE WITH CHAKAND LOCATED AT RRI CABIN
3. TOKENLESS BLOCK INSTRUMENT WITH MPO FOR COMMON LINE LOCATED AT NORTH OUTER CABIN
4. DOUBLE LINE BLOCK INSTRUMENT(SGE TYPE) CONNECTED WITH KASTA LOCATED AT WAST 'A' CABIN
5. BLOCK JOINT OF 062T,62/67T NORTH OUTER CABIN IS STAGGERED BY 1.82M AS PER APPROVED TYPICAL S.I. 2362.
6. ANGLE OF 'X'INGS ARE INDICATED
7. AXLE COUNTER PROVIDED BETWEEN GAYA & MANPUR GAYA CHAKAND & GAYA KASTHA BOTH DIRCTION FOR L.V. VERIFICATION.