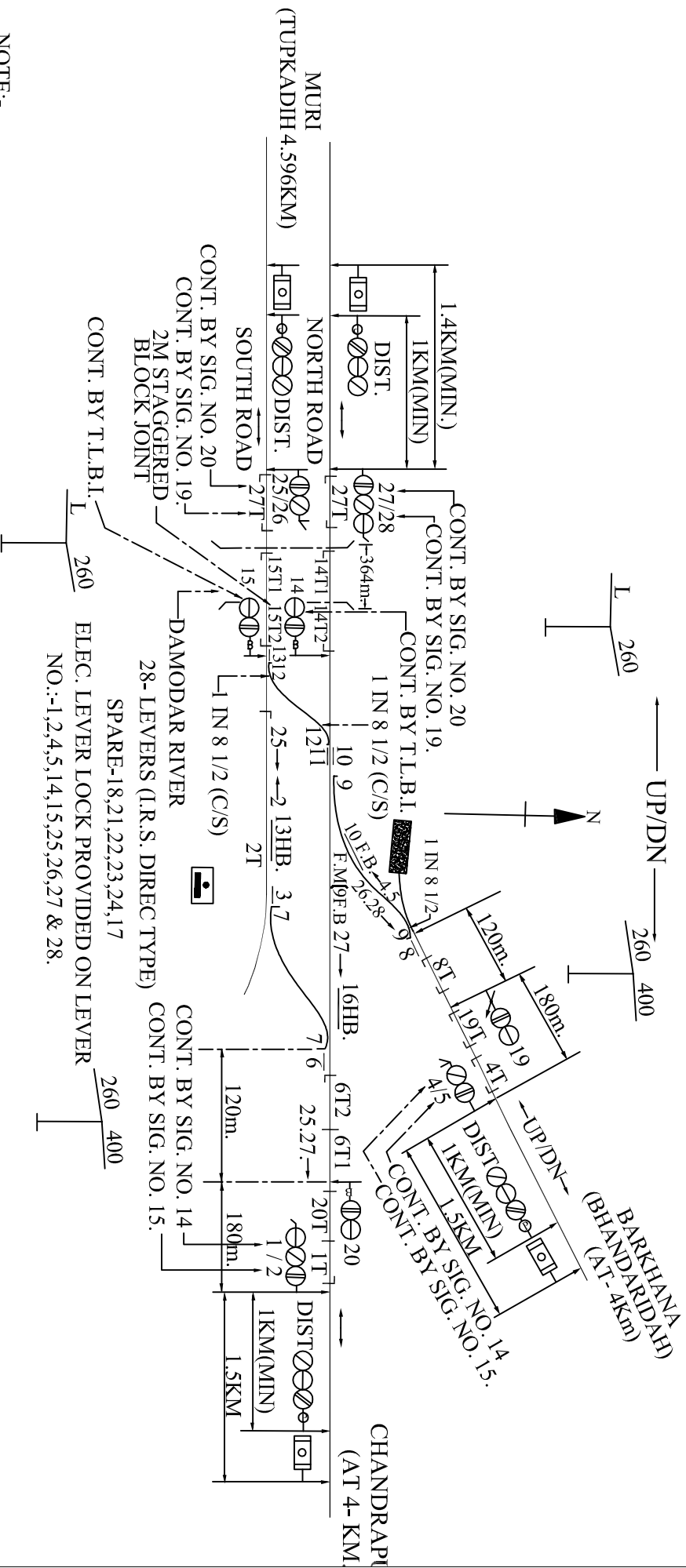


RAJABERA (RJBE) MACLS, "SPL" CLASS STD- III



NOTE:-
 1) ALL POINTS ARE 1 IN 12 EXPECT WHERE OTHERWISE INDICATED.
 2) ALL FACING POINTS STAND UNBOLTED NORMAL AND REVERSED EXCEPT WHERE OTHERWISE INDICATED.

TWIN SINGLE LINE WORKING BETWEEN BOKARO STEEL CT
 'N' CABIN RAJABERA. AS PER F.W.P. ITEM NO. 2-2 OF 1989-90

ASPECT	CONTROL	CHART	
FOR JOINT LINE(UP) —→	FOR JOINT LINE(DN.) —→	FROM BARKAHANA SIDE	FROM CHANDRAPURA SID
DIST. SIG. NO. 27 SIG. NO. 20 G-----G Y-----R	DIST. SIG. NO. 25 SIG. NO. 20 YY-----YWU Y-----R	SIG. NO. 14 SIG. NO. 5 DIST. G-----YWU R-----R	SIG. NO. 14 SIG. NO. 1 DIST. G-----YWU R-----R