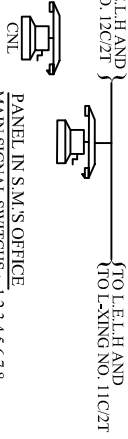
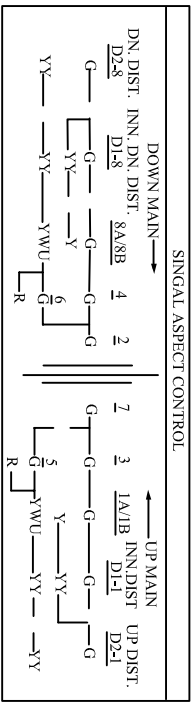
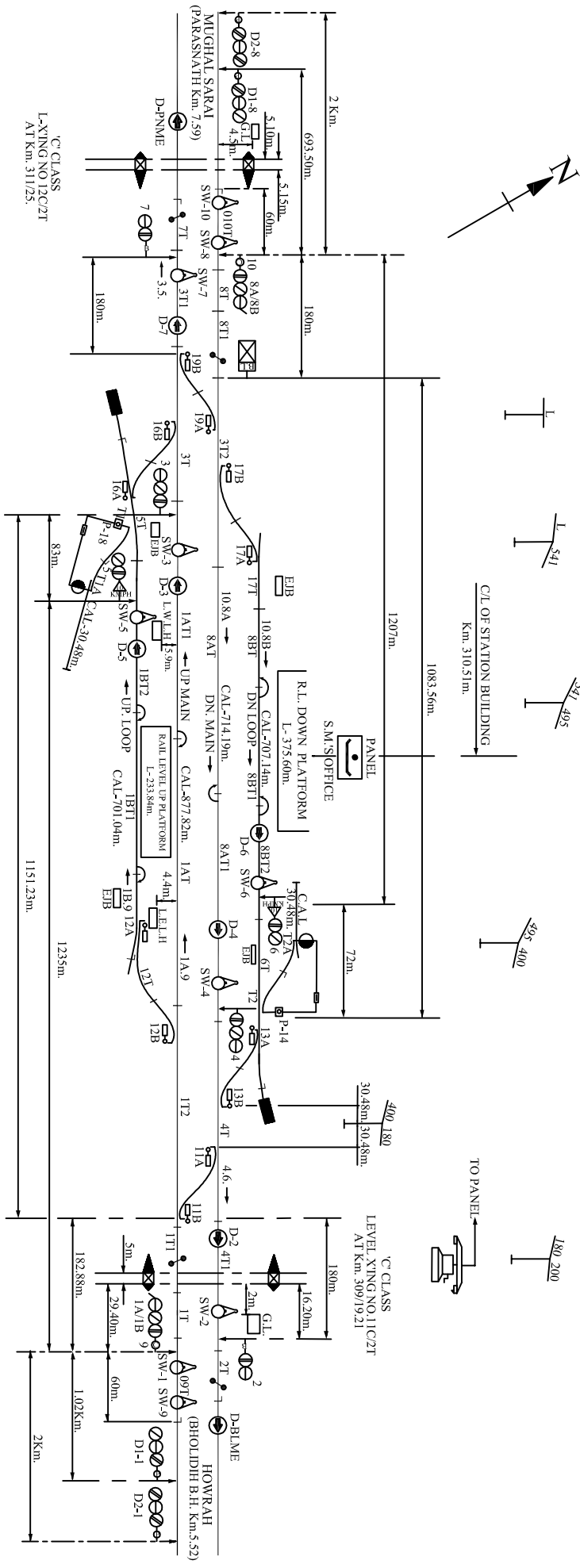


NIMIAGHAT (NMG)

MACLS, CLASS - 'B' STD-III
(CENTRAL/PANEL)

DATE OF COMMISSIONING:-31.03.1992



- POINT SWITCHES - 1,11,12,13,14,15,16,17,18,19.
CRANK HANDLE SWITCHES -
- (I). CH1 FOR PT. 11
 - (II). CH2 FOR PT. 12
 - (III). CH3 FOR PT. 13
 - (IV). CH4 FOR PT. 16
 - (V). CH5 FOR PT. 17
 - (VI). CH6 FOR PT. 19

NOTE :-
1. ABSOLUTE BLOCK SYSTEM OF WORKING WITH BLAME & PNME.
2. PROVISION OF BPAC (SSDAC) WITH URSBL, S.M.PANEL BETWEEN NMG-BLAME IN UP & DN LINE.
3. PROVISION OF BPAC (SSDAC) WITH URSBL, S.M. PANEL BETWEEN NMG-PNME IN UP & DN LINE.