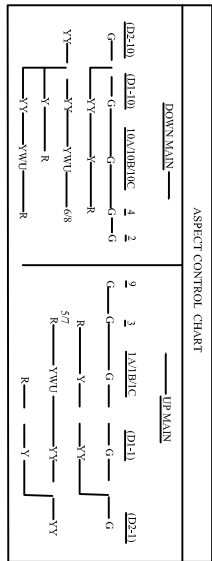
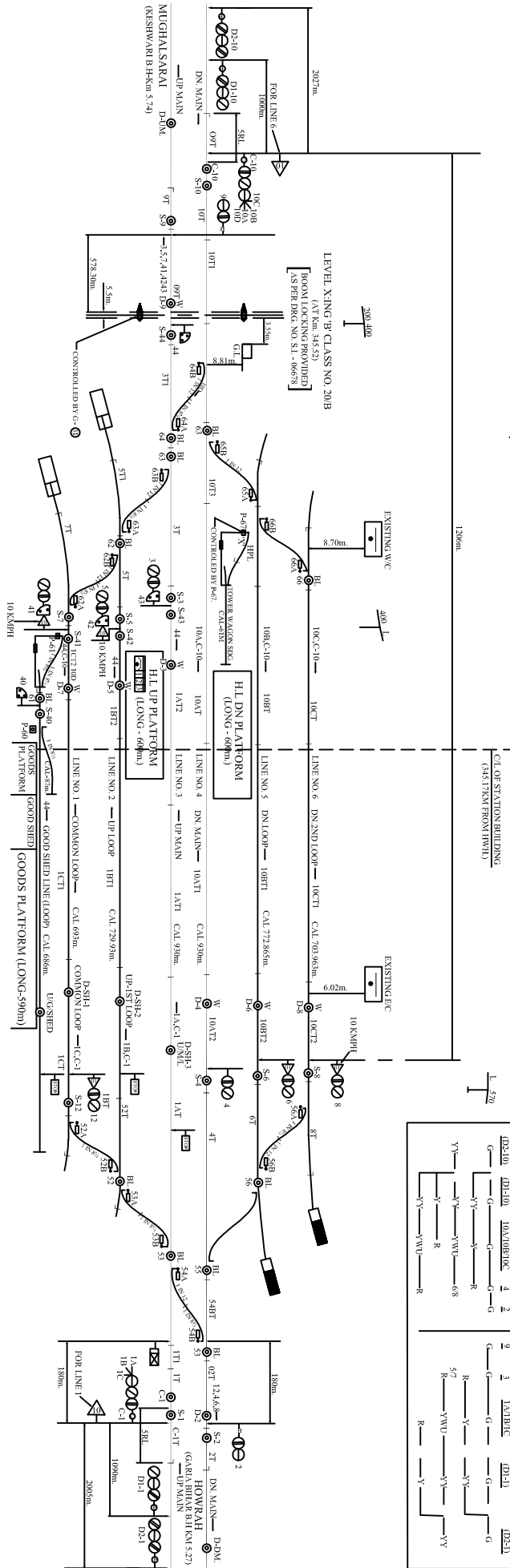


HAZARIBAGH ROAD (HZD) MACLS, 'B' CLASS STD-III (CENTRAL PANEL)



- CENTRAL PANEL**
1. MAIN SIGNAL BUTTONS - 1, 2, 3, 4, 5, 6, 7, 8, 9, 10, 12
 2. CALLING SIGNAL BUTTONS - C-1, C-10
 3. POINT BUTTONS - S-5, S-55, S-54, S-55, S-56, S-57, S-58, S-59
 4. KEY LOCK BUTTONS - P-60, P-61, P-62, P-63, P-64, P-65
 5. CRANK HANDLE BUTTONS - CH-1, CH-2, CH-3, CH-4, CH-5, CH-6, CH-7, CH-8, CH-9, CH-10
 6. SHUNT SIGNAL BUTTONS - 40, 41, 42, 43, 44
 7. GATE CONTROL BUTTONS - G-1

- NOTE:-**
1. ABSOLUTE BLOCK SYSTEM OF WORKING WITH GABA BHAR BH. AND KESWAR BH.
 2. DOUBLE LINE BLOCK INSTRUMENT 'NSW' JAWB TYPE PROVIDED AT CENTRAL.
 3. PANEL CONNECTED WITH GABA BHAR BH & KESWAR BH RESPECTIVELY.
 4. CONTROL TELEPHONE 'NSW' 5095.
 5. MAIN TELEPHONE CONNECTED WITH CENTRAL PANEL 'SM' & 'L' XING.
 6. MOUNTING TELEPHONE CONNECTED WITH CENTRAL PANEL 'SM' & 'L' XING.
 7. ANGLE OF CROSS OVER ARE INDICATED.
 8. TRIPLE POLE LAMPS TO BE PROVIDED FOR ALL SIGNALS.
 9. NO RUN THROUGH VIA UP & DN LOOP LINES.