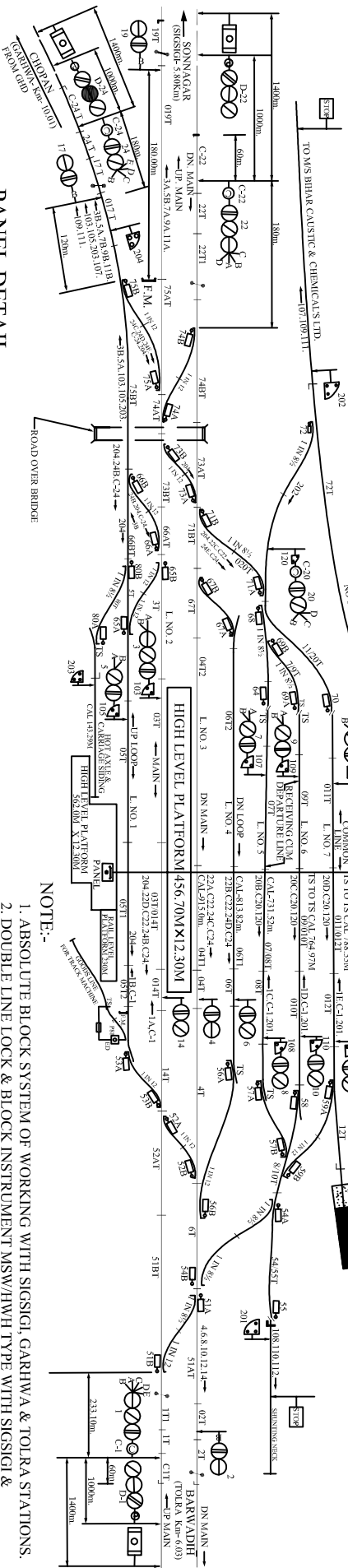
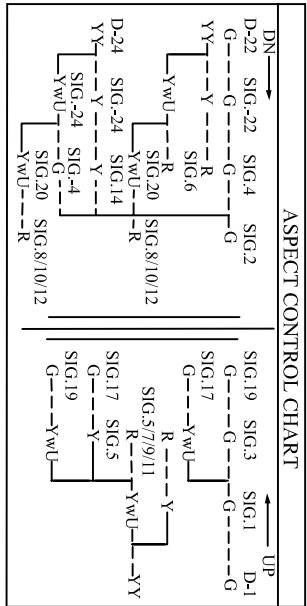


GARHWARA ROAD (GHD)

MACT'S 'B' CLASS STD -III
 DATE OF COMMISSIONING:- 04.06.2008



PANEL DETAIL

MAIN SIGNAL:- 1,2,3,4,5,6,7,8,9,10,11,12,14,17,19,20,22,24.
 CALLING-ON SIGNAL:- C-1,C-20,C-22,C-24.
 SHUNT SIGNAL:- 103,105,107,108,109,110,111,112,120,201,202,203,204.
 SIDING CONTROL:- P-81.
 POINTS:- 51,52,53,54,55,56,57,58,59,64,65,66,67,68,69,70,71,72,73,74,75,80.
 CRANK HANDLE CONTROL BUTTONS:- CH-1,CH-2,CH-3,CH-4,CH-5,CH-6,CH-8,CH-9.
 AT Km. 2/14-15 BETWEEN GHD-GHQ.

NOTE:-

1. ABSOLUTE BLOCK SYSTEM OF WORKING WITH SIGSIGI, GARHWA & TOLRA STATIONS.
2. DOUBLE LINE LOCK & BLOCK INSTRUMENT MSW/HWH TYPE WITH SIGSIGI & TOLRA STATION LOCATED AT PANEL ROOM.
3. CONTROL PHONE PROVIDED AT PANEL ROOM.
4. LV PROVING AXLE COUNTERS PROVIDED FOR GARHWA ROAD-SIGSIGI, GARHWA ROAD-GARHWA AND GARHWA ROAD-TOLRA SECTION IN BOTH UP LINE AND DN LINE.
5. ANGLE OF CROSSINGS ARE INDICATED.
6. SINGLE LINE TOKENLESS BLOCK INSTRUMENT WITH GARHWA LOCATED AT PANEL ROOM.
7. MEGNETO TELEPHONE PROVIDED BETWEEN SMS OFFICE GATE NO.2/C/E.
8. MEGNETO TELEPHONE PROVIDED BETWEEN SMS OFFICE AND L.C. GATE NO.1/C AT Km. 2/14-15 BETWEEN GHD-GHQ.