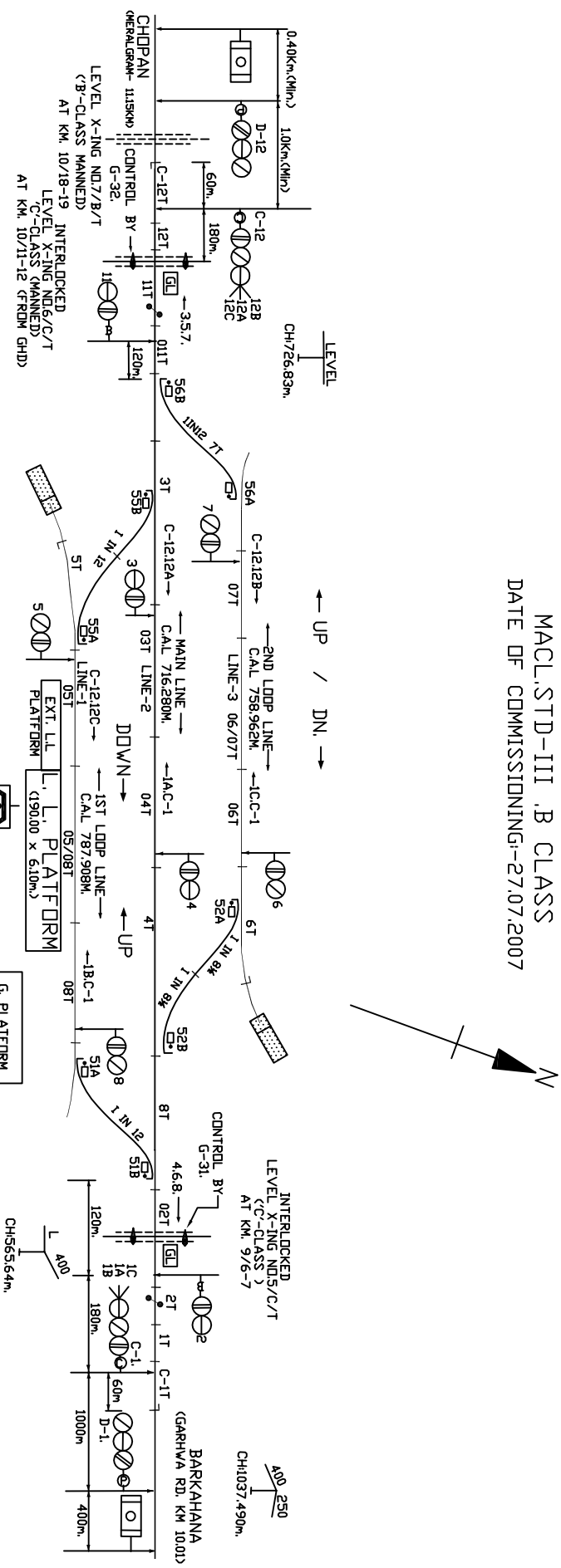


GARHWA (GHQ)

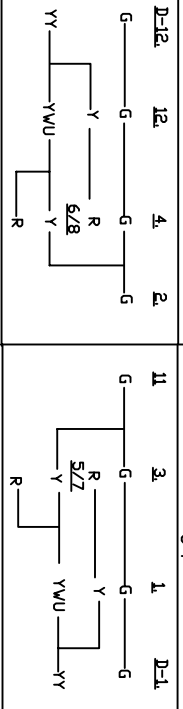
MACL STD-III, B CLASS

DATE OF COMMISSIONING-27.07.2007



ASPECT CONTROL CHART

DOWN	4	2
UP	11	3
	1	D-1



PANEL DETAILS

- 1. MAIN SIGNAL BUTTONS-1,2,3,4,5,6,7,8,11,12
- 2. CALLING ON SIGNAL BUTTONS-C-1C-1E
- 3. POINT CONTROL BUTTONS-S1,S2,S3,S5,S6
- 4. CRANK HANDLE CONTROL BUTTONS-CH1,CH2,CH3,CH4
- 5. L-XING GATE CONTROL BUTTON-G-31, G-32

NOTE

1. ABSOLUTE BLOCK SYSTEM OF WORKING WITH GARHWA RD. AND MARALGRAM STATIONS.
2. TOKENLESS BLOCK INSTRUMENT G. M. TYPED WITH GARHWA RD. & MARALGRAM STATIONS ARE LOCATED AT PANEL CABIN.
3. CONTROL TELEPHONES PROVIDED AT PANEL ROOM.
4. ANGLE OF CROSSING ARE INDICATED.
5. L.V. PROVIDING AXLE COUNTERS ARE PROVIDED FOR GARHWA-GARHWA RD. & GARHWA-MARALGRAM SECTIONS AND ARE INTERLOCKED WITH CONDERNED TOKENLESS BLOCK INSTRUMENT.
6. MAGNETO TELEPHONES ARE CONNECTED WITH SM PANEL ROOM & L.C GATE NO. 3/C/E, 5/C/T, 6/C/T & 7/B/T.