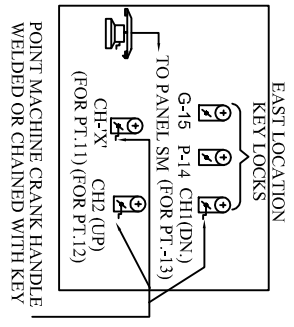
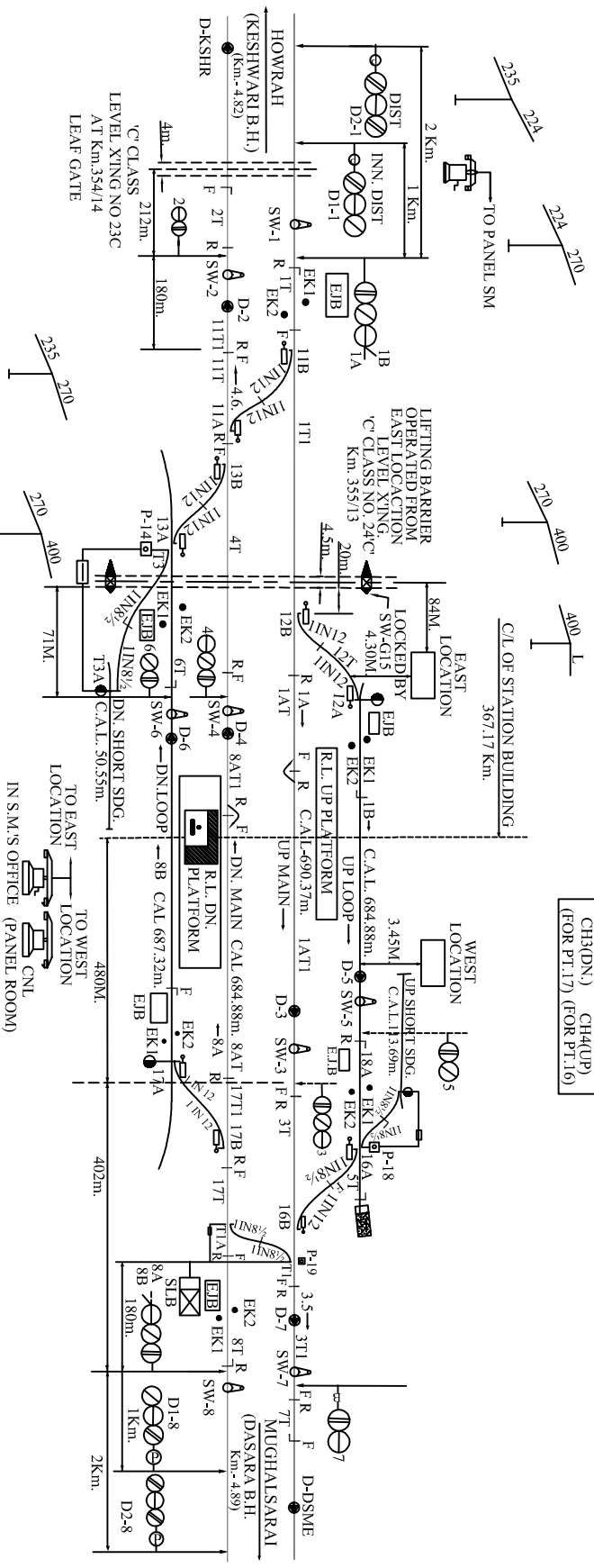
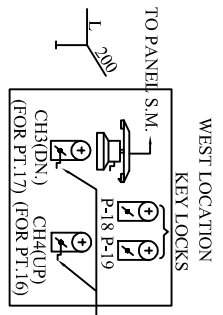
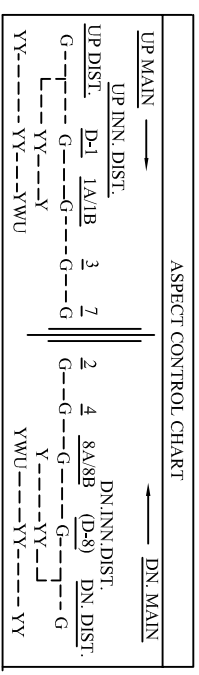


CHAUBE (CBH)

CENTRAL PANEL, MACLS,'B' CLASS STD-III

Date of commissioning:-25.01.1991



NOTE:-

1. A.B. SYSTEM OF WORKING WITH DASARA B.H. & KESHWARI B.H. WITH DOUBLE LINE BLOCK INSTRUMENT MSW TYPE.
2. SECTION CLEARANCE BETWEEN CHAUBE & KESHWARI B.H. IN UP DIRECTION & BETWEEN CHAUBE & DASARA B.H. IN DN. DIRECTION ARE THROUGH AXLE COUNTERS RETAINING LOCK & BLOCK INSTRUMENTS IN BOTH DIRECTIONS IN ADDITION.