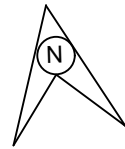


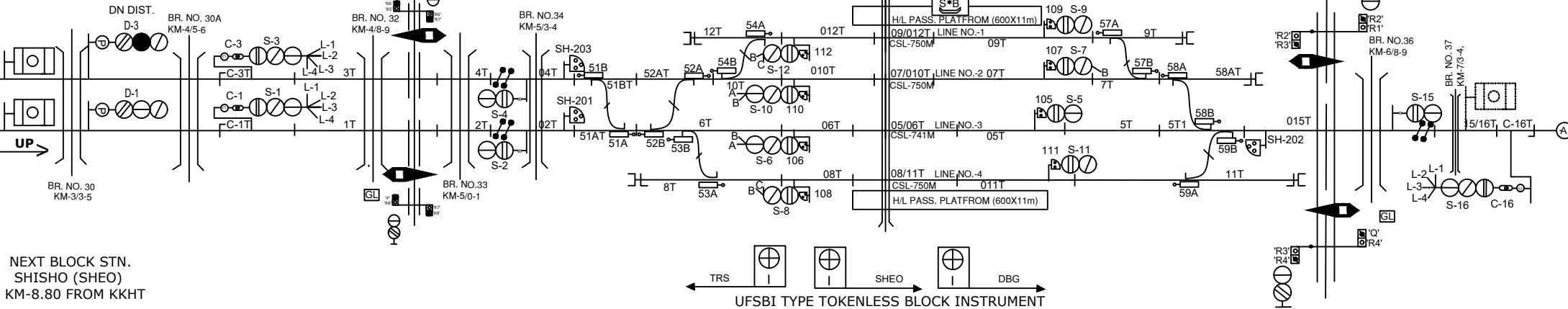
# KAKARGHATI STATION

## ककरघाटी स्टेशन



NEXT BLOCK STN.  
DARBHANGA (DBG)  
KM-6.34 FROM KKHT

INTERLOCKED  
L-XING NO.29 'C'  
AT KM 4/8-9,  
WIDTH - 5.5M,  
CH-1466

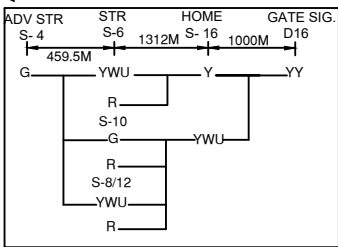


NEXT BLOCK STN.  
SHISHO (SHEO)  
KM-8.80 FROM KKHT

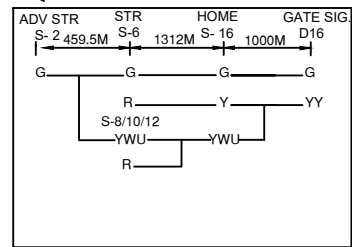


- CONNECTED WITH LC GATE No. 29 'C'
- CONNECTED WITH LC GATE No. 30 'C'
- CONNECTED WITH LC GATE No. 31 & 32 'SPL'

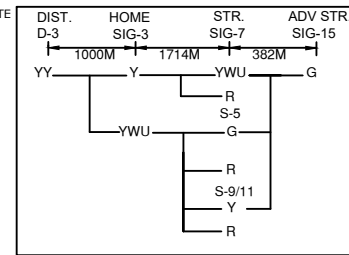
← DN ASPECT CONTROL CHART SHISHO SIDE



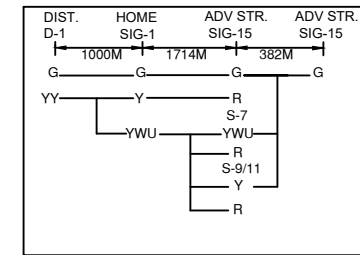
← DN ASPECT CONTROL CHART DBG SIDE



→ UP ASPECT CONTROL CHART SHISHO END



→ UP ASPECT CONTROL CHART DBG END



CLASS OF STATION : B  
STD OF SIG & INTERLOCKING: STD-II (R)

EAST CENTRAL RAILWAY  
SAMASTIPUR DIVISION

(E.I)  
STATION WORKING RULE DIAGRAM  
MACL, STD-II (R), CLASS 'B'

KAKARGHATI

SWRD NO.-  
DY.CSTE/CON/  
SPJ/2008/RD/06