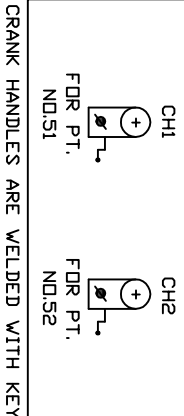
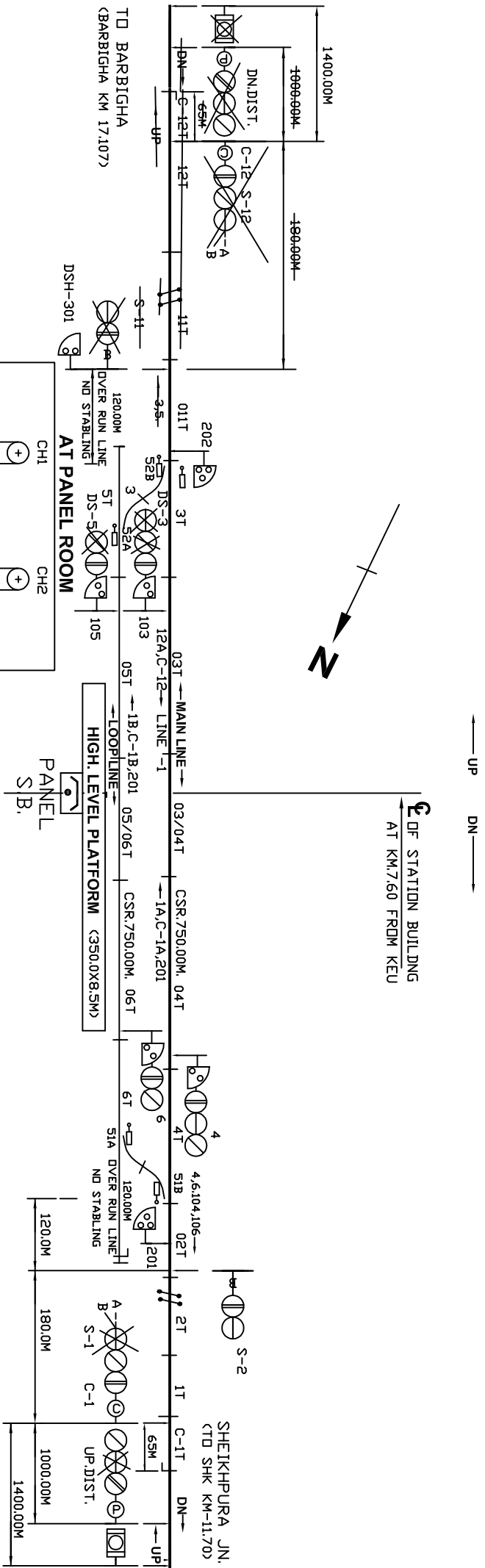


# SARSA JAMALPUR



CRANK HANDLES ARE WELDED WITH KEY

### PANEL DETAILS:-

- MAIN SIGNAL BUTTONS: - 1,2
- CALLING-DN-SIGNAL BUTTONS: - C-1
- POINTS BUTTONS: - 51,52
- CRANK HANDLE BUTTONS: - CH-1,CH-2

### NOTE:-

1. ABSOLUTE BLOCK SYSTEM OF WORKING WITH SHEIKHPURA JN.
2. USBI SM PANEL (SINGLE LINE) WORKING WITH HASSDAC BETWEEN SARSA JAMALPUR & SHEIKHPURA.
3. CONTROL TELEPHONE PROVIDED AT PANEL CABIN.
4. LED SIGNALS ARE USED.
5. ALL ANGLE OF X-ING ARE 1 IN 12 OTHERWISE INDICATED.
6. 60 SEC TIME DELAY PROVIDED FOR ALL RECEPTION CALLING ON SIGNALS.
7. VIDE RLY BOARD L NO. 2010/SAFETY (A&R)/19/23 DT 02.11.12 ITEM NO 'C' INTEGRATED POWER SUPPLY TO BE PROVIDED.
8. TO SUIT 25 KV AC TRACTION.
9. GR PARA 3.40(1) MUST BE FOLLOW.

<b>E.C. RAILWAY</b>			
<b>DNR. DIVN.</b>	SRD/STE/ECGR/DNR	HASTE/ECGR/JNR	SS/ECGR/DNR
	PANEL SIGNALLING PLAN		
	MACL, STD-IIR), CLASS-'B',		
<b>SARSA JAMALPUR</b>			SR. NO. SS-1.
<b>(SAR-JMP)</b>			ECR/SIP/DNR/528/2018