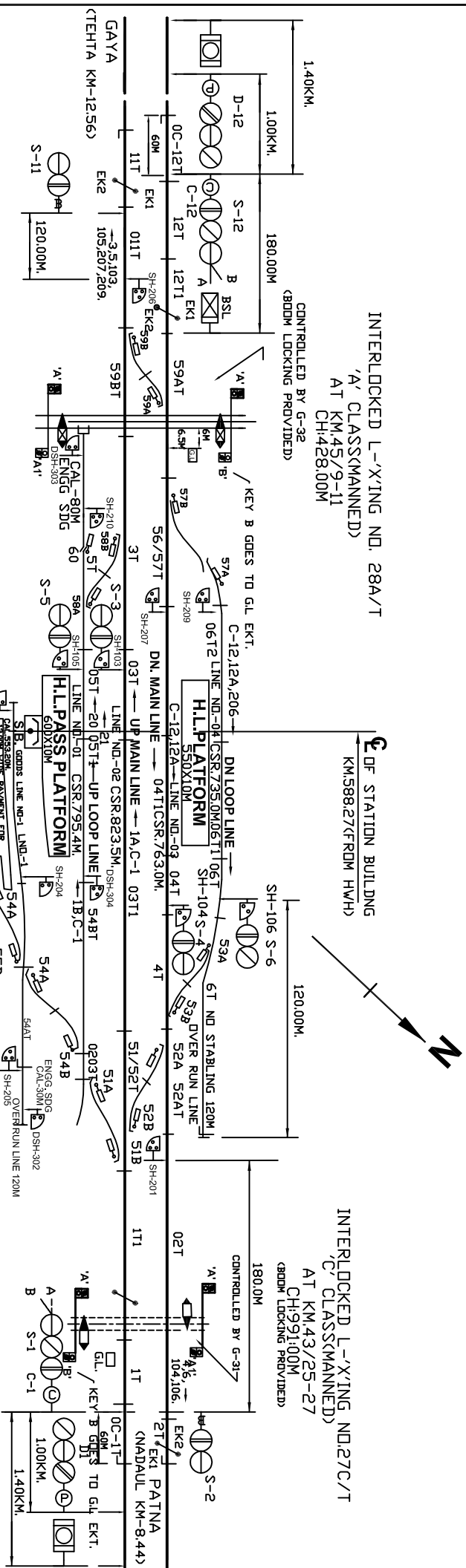


JAHANABAD (JHD)



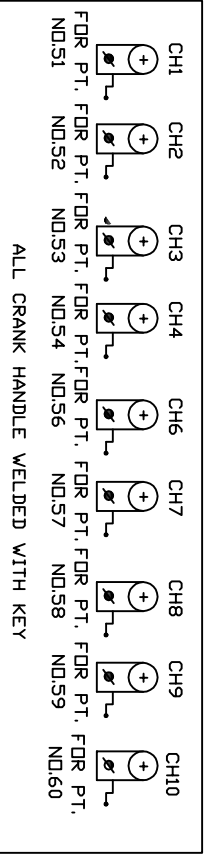
INTERLOCKED L-X'ING NO. 28A/T
 'A' CLASS(MANNED)
 AT KM.45/9-11
 CH:428.00M
 (ROOM LOCKING PROVIDED)

INTERLOCKED L-X'ING NO.27C/T
 'C' CLASS(MANNED)
 AT KM 43/25-27
 CH:91.00M
 (ROOM LOCKING PROVIDED)

PANEL DETAILS

- MAIN SIGNAL BUTTONS:- 1,2,3,4,5,6,11,12.
 CALLING-ON-SIGNAL BUTTONS:- C-1,C-12
 POINTS BUTTONS:- 51,52,53,54,55,57,58,59,60.
 CRANK HANDLE CONTROL BUTTON:- CH-1,CH-2,CH-3,CH-4,CH-5,CH-7,CH-8,CH-9,CH-10.
 LC GATE CONTROL BUTTONS:- G-31,G-32.
 SHUNT SIGNAL BUTTONS:- 103,104,105,106,201,203,204,206,207,209,210.

AT PANEL ROOM



- NOTE:-**
1. ABSOLUTE BLOCK SYSTEM OF WORKING WITH TEHTA & MADDAUL STATION.
 2. MAGNETO TELEPHONE PROVIDED BETWEEN PANEL ROOM & L.C. GATE NO. 27/C/T, 28B/T, 29A & 30B/E.
 3. ALL ANGLE OF X'ING ARE 1 IN 12 EXCEPT MENTIONED.
 4. CONTROL TELEPHONE PROVIDED AT PANEL ROOM.
 5. SIGNALING INSTALLATION HAS BEEN MADE TO SUIT RE SPECIFICATION.
 6. THIS SIP HAS BEEN MADE IN CONNECTION WITH DOUBLING WITH PATNA-GAYA SECTION.
 7. LED SIGNAL PROVIDED FOR ALL MAJL SIGNALS.
 8. LOCKING ARRANGEMENT OF BOOM LOCK LEVER TO BE INCONFORMITY WITH ER. DRG. NO. S106678 DT. 19.11.99.
 9. UFSBI BLOCK PANEL WITH BPAC (HASSDAC) WORKING BETWEEN JHD-NDU.
 10. UFSBI BLOCK PANEL WITH BPAC (HASSDAC) WORKING BETWEEN JHD-THA.

E.C. RAILWAY		PANEL		SR. NO. PG-7.	
DNR. DIVN.		SIGNALING PLAN		ECR/SIP/DNR/THA/294/	
SRJSTE/ECR/DNR	ASTE/ECR/DNR	CHW/ECR/DNR	MAJL, STD-1IR), CLASS--'B'	2023.	
			JAHANABAD (JHD)		