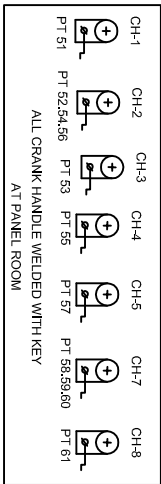
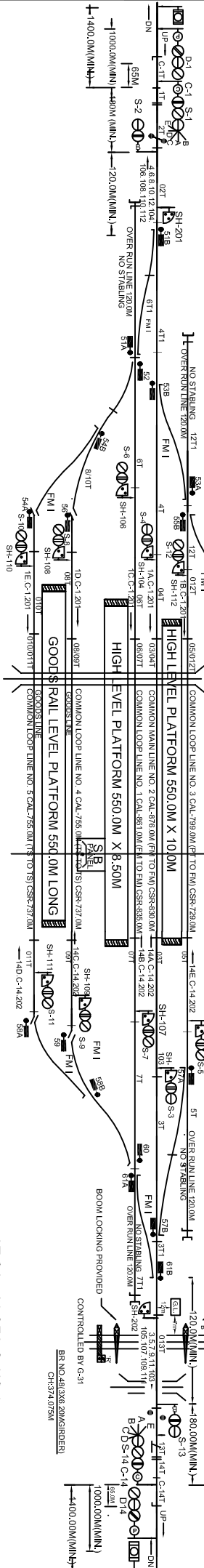


# WENA (WENA)

TO BAKHTIYARPUR JN)  
(KM.15.48)  
NEXT BLOCK STN:  
HARNAUT (KM-5.08)

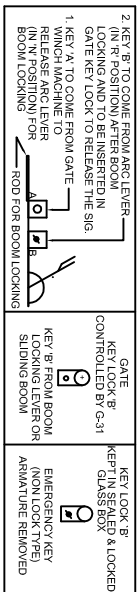
DN UP  
Q OF STATION BUILDING WENA (F)  
(AT KM 15/480 FROM BKP)  
(AT KM 15.87 FROM BEHS)  
CH: 0.00M

(INTERLOCKED)  
LAMP IND. (Z/MANDED)  
CH: 35.00M (KM-15.87)  
CLASS. C' WIDTH: 3.5M ANGLE OF CROSSING: 90° TO RAJGIR  
(AT KM.37.52)  
KEY 'B' WILL GO TO -  
NEXT CROSSING STN. BEHS  
(AT KM. 29/350 FROM BKP)  
(AT KM. 13.87 FROM WENA)



**PANEL DETAILS**

MAIN SIGNAL BUTTONS	CALLING - ON SIGNAL BUTTONS	POINT BUTTONS	SHUNT SIGNAL BUTTONS
CH-1	CH-2	CH-3	CH-4
CH-5	CH-6	CH-7	CH-8
PT 51	PT 52,54,56	PT 53	PT 55
	PT 57	PT 58,59,60	PT 61
ALL CRANK HANDLE WELDED WITH KEY AT PANEL ROOM			



- NOTE:-**
- ABSOLUTE BLOCK SYSTEM OF WORKING WITH HARNAUT AND BIHARSHARIF.
  - ALL ANGLE OF KING ARE 1 IN 12 EXCEPT AS MENTIONED.
  - CONTROL TELEPHONE PROVIDED AT L.C. GATE NO. 10, C-17, C-23, C-24, C-30C.
  - MAGNETO TELEPHONE PROVIDED AT L.C. GATE NO. 10, C-17, C-23, C-24, C-30C.
  - TRACK NO. 11 - 27 AND 137 - 147 STAGGERED BY 1.82M.
  - INTERLOCKED SLIDING BOOM LOCK ARRANGEMENT PROVIDED AT L.C. GATE NO. 17
  - U/SBI BLOCK PANEL WITH SSDAC PROVIDED BETWEEN WENA-HARNAUT
  - U/SBI BLOCK PANEL WITH SSDAC PROVIDED BETWEEN WENA-HARNAUT
  - SIGNALING STATION IS SUITABLE FOR 2KV AC TRACTION

**AT GL. - 31 OF L.C. NO.-17**

UNIT	DESCRIPTION	STATUS	REMARKS
1	KEY 'B' TO COME FROM ARC LEVER - (IN 'R' POSITION) AFTER ROOM COVERING AND TO BE INSERTED IN COUPLING SOCKET FOR RELEASE THE SIG 1. WIND UP MACHINE		
2	KEY 'B' FROM ROOM LOCKING LEVER FOR SIGNAL ROOM		
3	KEY 'B' FROM ROOM LOCKING LEVER FOR SIGNAL ROOM		
4	KEY LOCK 'B' KEPT IN SEALED & LOCKED GLASS BOX		
5	EMERGENCY KEY (NON LOCK TYPE) AVAILABLE REMOVED		

Panel: WENA (WENA)  
S/N NO. BR-3  
CONSTRUCTION DATE: 20/02/2017