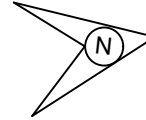


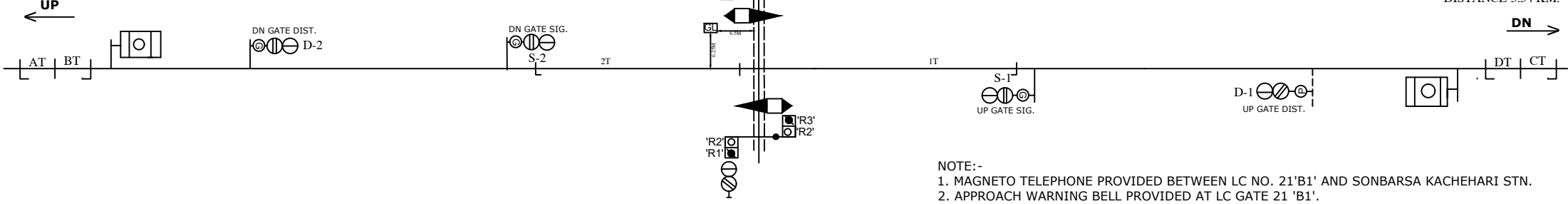
L.C NO.21 'B1'



INTERLOCKED
L-XING NO. 21
CLASS-'B1' (M),
AT KM.30/0-1

NEXT STN:-
SIMRI BAKHTIYARPUR
DISTANCE 4.60 KM

NEXT BLOCK STN:
SONBARSA KACHEHARI
DISTANCE-3.54 KM.



- NOTE:-
1. MAGNETO TELEPHONE PROVIDED BETWEEN LC NO. 21'B1' AND SONBARSA KACHEHARI STN.
 2. APPROACH WARNING BELL PROVIDED AT LC GATE 21 'B1'.
 3. DEAD APPROACH LOCKING PROVIDED AT LC GATE 21'B1' WITH 60 SEC. TIME DELAY.
 4. THE SIGNALLING INSTALLATION IS SUITABLE FOR 25KV AC TRACTION.
 5. ELECTRIC LIFTING BARRIER WITH SLIDING BOOM PROVIDED AT LC GATE NO. 21'B1'.
 5. ROAD SIDE SIGNAL SHALL BE RAISED BACK TO DANGER BEFORE MOVING OF SLIDING BARRIER TO CLOSE THE LC GATE.
 6. BACK LOCKING ARRANGEMENT PROVIDED AT LC GATE NO.-21'B1' USING TRACK CIRCUIT 1T & 2T.

<p>पूर्व मध्य रेल E.C. RAILWAY समस्तीपुर मंडल SAMASTIPUR DIVISION</p>				<p>GATE WORKING RULE DIAGRAM OF L-XING No.21 'B1' BETWEEN SIMRI BAKHTIYARPUR - SONBARSHA KACHEHARI AT KM 30/0-1</p>	<p>NOT TO SCALE SWRD NO.</p>
	SR.DSTE/SPJ	DSTE/SPJ	JE/DRG		<p>ECR/GWRD/SPJ/SBM-SBV/ L-XING 21 'B1'/2021</p>
				TO SUIT SIP No.ECR/SIP/SPJ/SBV-SBM/L-XING-21 'B1'/2021	