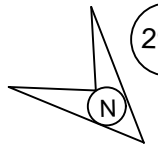


# BAGHA DOUBLING PH-I

# BAGHA STATION बगहा स्टेशन

29A



NEXT BLOCK STN.  
VALMIKI NAGAR ROAD  
(VKNR) AT KM-9.03  
(FROM BUG).

L-XING NO. 52 (M) 'C' CLASS  
CH. 2258  
KM-289.846

L-XING NO. 53 (M) 'C' CLASS  
CH. 2642  
KM-290.230

INTERLOCKED  
L-XING NO.51'C'(M)  
CH. 1926 KM-289.514

GOODS PLATFORM

C.L. OF STATION BLDGS.  
KM 287.588 (FROM BCA)

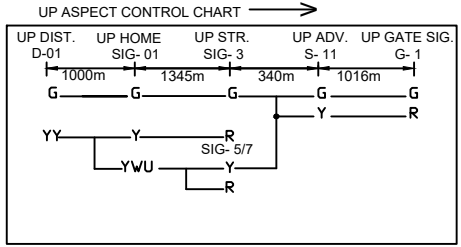
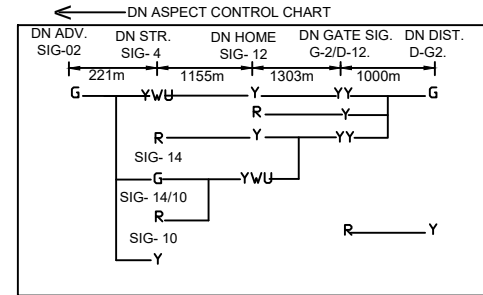
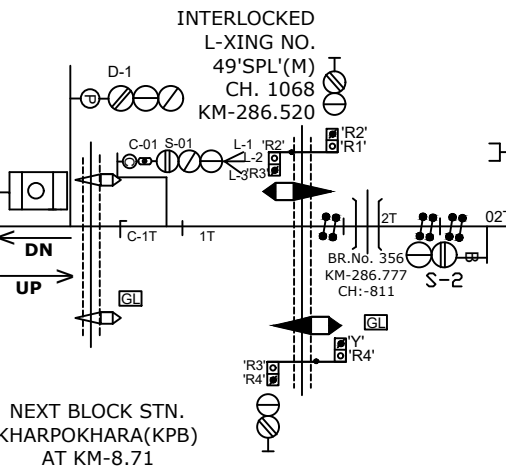
BR.No. 357  
KM-287.257  
CH:-331

H.L. PLATFORM (600M X 12M)

H.L. PLATFORM (587M X 8M)

BR.No. 358  
CH.-812.00M  
KM-288.400

L-XING NO. 50 'SPL.'  
CH. 556.00  
KM-288.144



NOTE:-  
MAGNETO TELEPHONE CONNECTION PROVIDED WITH L.C NO.45 'C', 47'C', 48'C' & 49'SPL' BETWEEN BUG-KPB AND LC GATE NO.50 'C', 51'C', 52'C', 53'C', 54'C' & 55'SPL' BETWEEN BUG - VKNR.

CLASS OF STATION : B  
STD OF SIG & INTERLOCKING: STD-II

EAST CENTRAL RAILWAY  
SAMASTIPUR DIVISION

ELECTRONIC INTERLOCKING (E.I)  
STATION WORKING RULE DIAGRAM  
MACL, STD-II, CLASS 'B'

BAGHA

SWRD NO.-

DY.CSTE/RE/DNR/  
348/2019(RD)

SR.DSTE/SPJ DSTE/SPJ JE/DRG TO SUIT SIP NO. ECR/SIP/SPJ/348/2022, A2