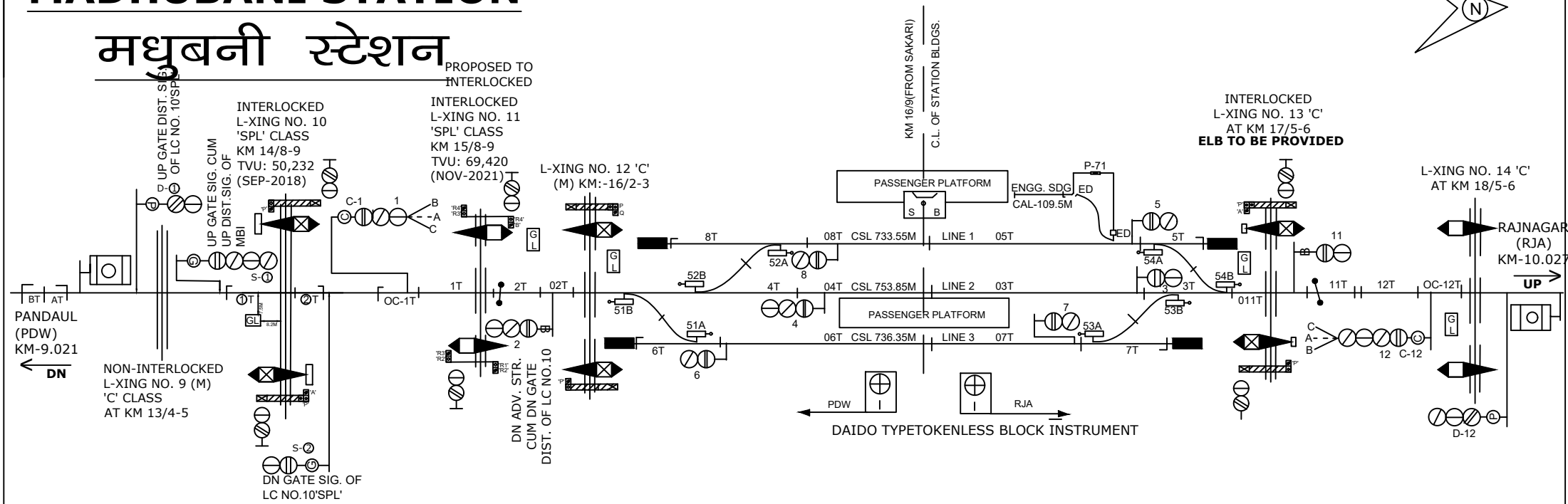
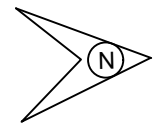
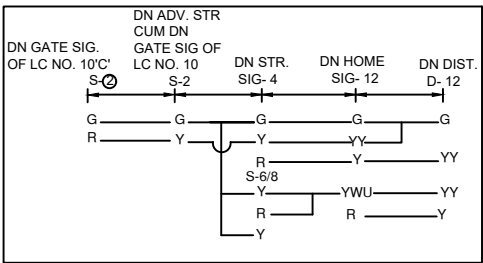


MADHUBANI STATION

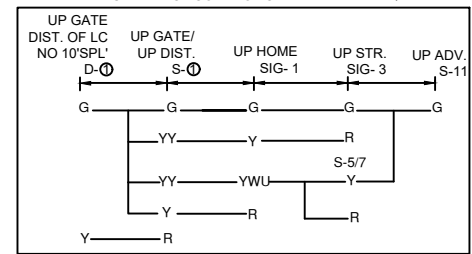
मधुबनी स्टेशन



DN ASPECT CONTROL CHART ←



UP ASPECT CONTROL CHART →



NOTE:-
MAGNETO TELEPHONE CONNECTED PROVIDED BETWEEN PANEL CABIN , LC GATE - 8 'A', 9'C', 10'SPL', 11'SPL', 12'C' BETWEEN PDW-MBI & 13'C', 14'C' & 15'C' BETWEEN MBI-RJA.

CLASS OF STATION : B
STD OF SIG & INTERLOCKING: STD-II®

EAST CENTRAL RAILWAY SAMASTIPUR DIVISION				STATION WORKING RULE DIAGRAM MACL. STD-II®. CLASS 'B'	MADHUBANI	SWRD NO.-
	SR.DSTE/SPJ	DSTE/SPJ	JE/DRG	TO SUIT SIP NO. ECR/SIP/SPJ/381/2014. ALT-VIII		SR.DSTE/SPJ/ 2019/RD/12