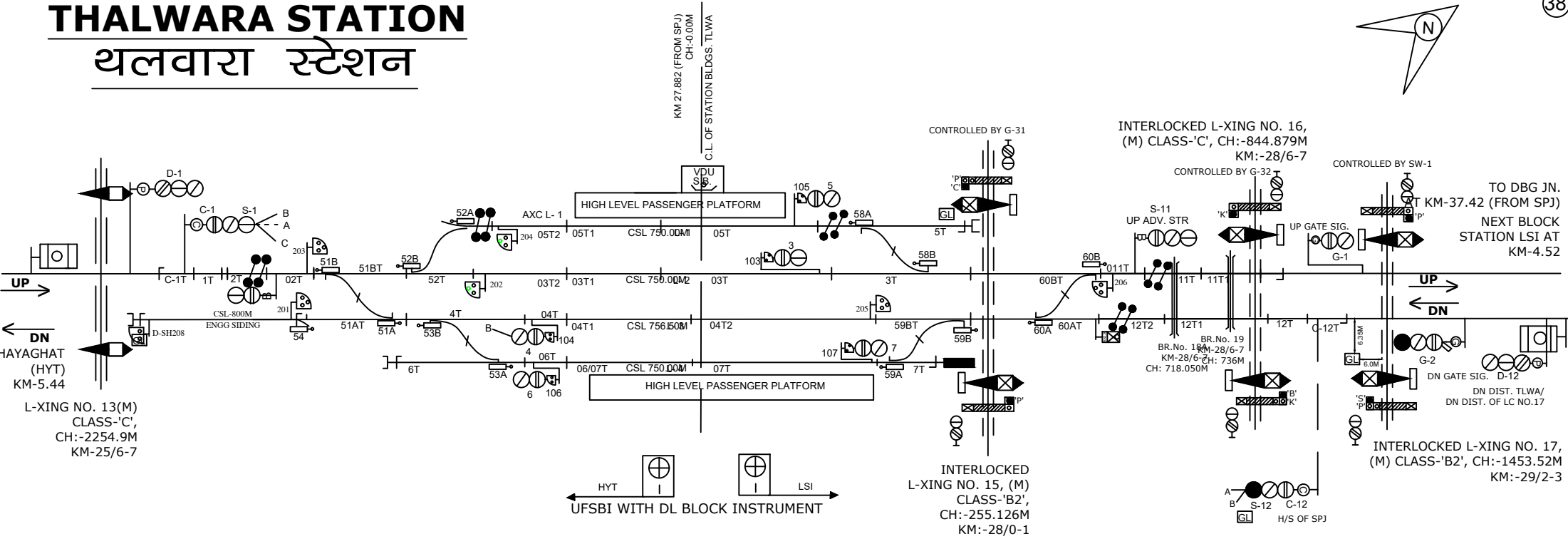
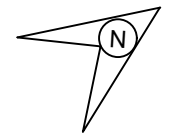
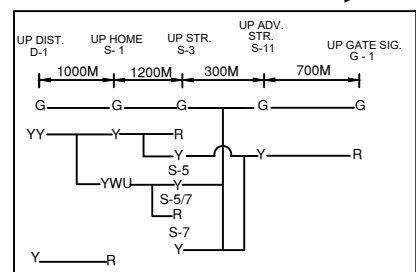


THALWARA STATION

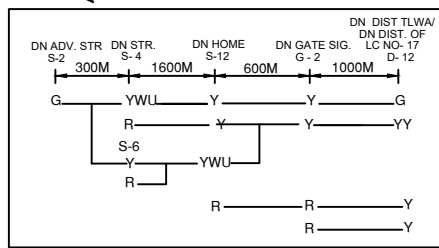
थलवारा स्टेशन



UP ASPECT CONTROL CHART →



← DN ASPECT CONTROL CHART



NOTE:-

1. MAGNETOTELEPHONE CONNECTED BETWEEN SM ROOM AND GATE NO.13,15,16 & 17.
2. THE SIGNALLING INSTALLATION IS SUITABLE FOR 25 KV AC TRACTION.

CLASS OF STATION : B
 STD OF SIG & INTERLOCKING: STD-II (R)

| | | | |
|---|---|------------|----------------------------------|
| EAST CENTRAL RAILWAY SAMASTIPUR DIVISION | CENTRAL PANEL STATION WORKING RULE DIAGRAM MACL, STD-II (R), CLASS 'B' EI PHASE-1 | THALWARA | SWRD NO.- |
| | | | Dy.CSTE/CON-1/SPJ 2019(RD)/11 |
| Sr.DSTE/SPJ | DSTE/SPJ | JE/DRG/SPJ | |