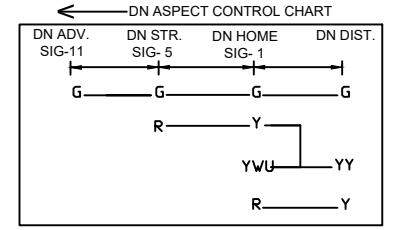
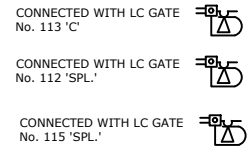
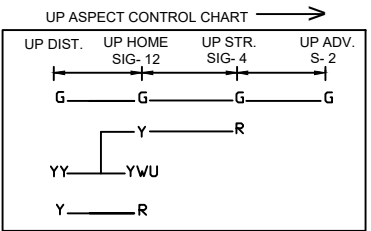
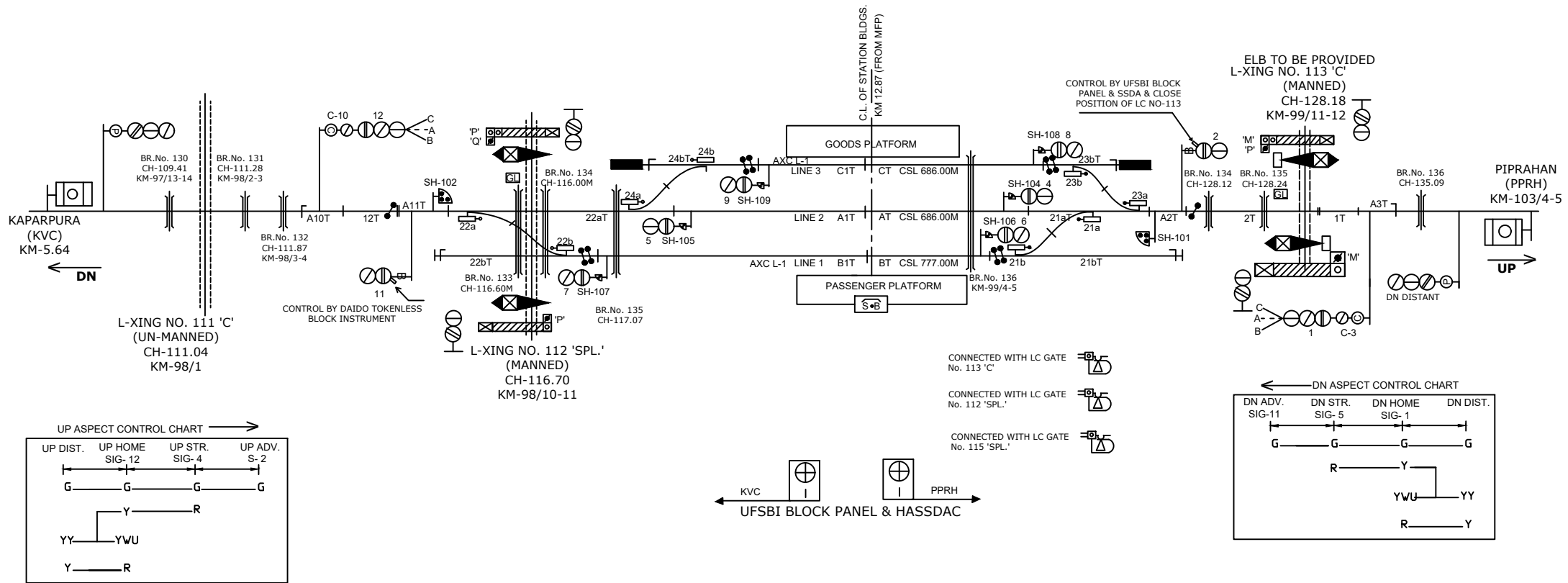
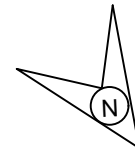


KANTI STATION

dkw/h LV's/ku



CLASS OF STATION : B
 STD OF SIG & INTERLOCKING: STD-II®

EAST CENTRAL RAILWAY SAMASTIPUR DIVISION	SR.DSTE/SPJ	DSTE/SPJ	JE/DRG	STATION WORKING RULE DIAGRAM MACL, STD-II®, CLASS 'B'	KANTI	SWRD NO.-
				TO SUIT SIP NO. ECR/SIP/SPJ/328/2005 ALT-P		SR. DSTE/SPJ/ 2022(RD)/04