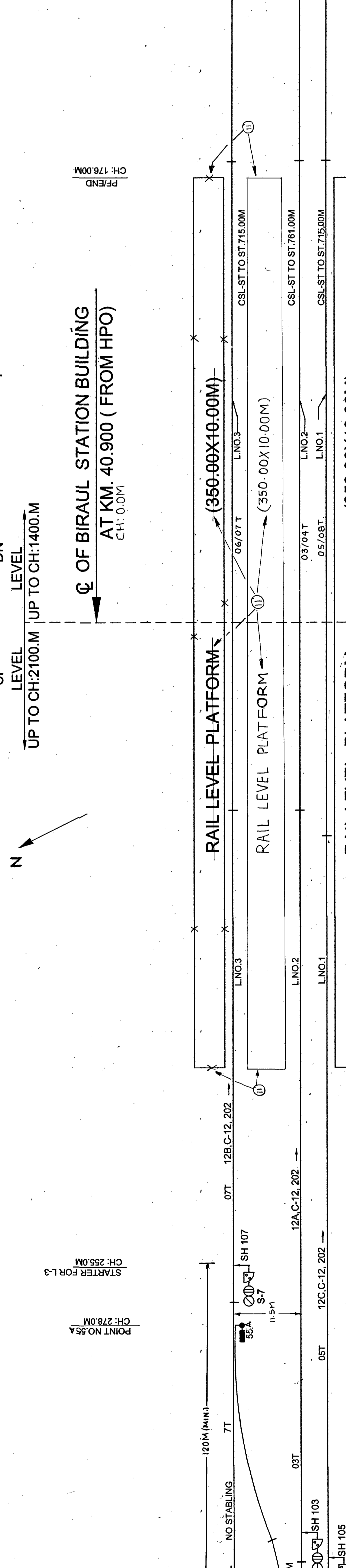
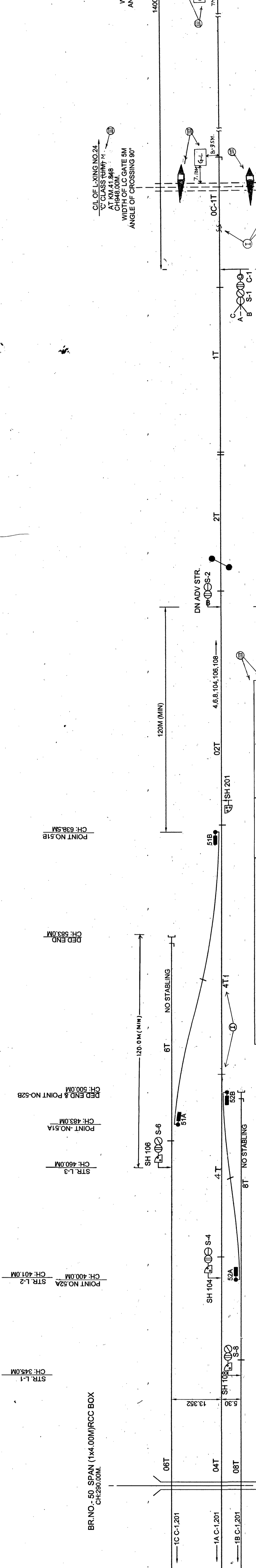


SPECIAL INSTRUCTIONS APPROVED SPECIAL INSTRUCTIONS

SL.NO	INSTRUCTIONS	ISSUED BY	AUTHORITY	DATE	REMARKS
1.	UNDER THE PROVISION OF GRAPAR, TRACK CHARTING & CIRCUITING HAS BEEN RECKONED FROM THE STARTER FOR THE FOLLOWING SIGNALS: (a) SIGNAL NO. 6 FOR LINE NO.3 FOR RECEPTION OF DN TRAIN UP TO DEAD END (b) SIGNAL NO. 8 FOR LINE NO.1 FOR RECEPTION OF DN TRAIN UP TO DEAD END (c) SIGNAL NO. 5 FOR LINE NO.1 FOR RECEPTION OF UP TRAIN UP TO DEAD END. (d) SIGNAL NO.7 FOR LINE NO.3 FOR RECEPTION OF UP TRAIN UP TO DEAD END.	C.S. & CIRCULAR ENGINEER RAILWAY			

AL.T.	DESCRIPTION	REFERENCE	CHECKED	COUNTER SIGNED	APPROVED	COMP.
I	INTRODUCTION OF TRACK CKT. 3712 AT...	SR DT/ET/SPT/L NO. N/2/26/STG/3712 (16.10.11)	(A.K. GUPTA)	(A.K. GUPTA)		
II	REVISIONS TO SIGNAL NO. 3, 5, 6, 7 & 8 AT 1043.000M... REVISIONS TO SIGNAL NO. 3, 5, 6, 7 & 8 AT 1043.000M... REVISIONS TO SIGNAL NO. 3, 5, 6, 7 & 8 AT 1043.000M... REVISIONS TO SIGNAL NO. 3, 5, 6, 7 & 8 AT 1043.000M... REVISIONS TO SIGNAL NO. 3, 5, 6, 7 & 8 AT 1043.000M...	SR DT/ET/SPT/L NO. N/2/26/STG/3712 (16.10.11) SR DT/ET/SPT/L NO. N/2/26/STG/3712 (16.10.11) SR DT/ET/SPT/L NO. N/2/26/STG/3712 (16.10.11) SR DT/ET/SPT/L NO. N/2/26/STG/3712 (16.10.11) SR DT/ET/SPT/L NO. N/2/26/STG/3712 (16.10.11)	(A.K. GUPTA) (A.K. GUPTA) (A.K. GUPTA) (A.K. GUPTA) (A.K. GUPTA)	(A.K. GUPTA) (A.K. GUPTA) (A.K. GUPTA) (A.K. GUPTA) (A.K. GUPTA)		

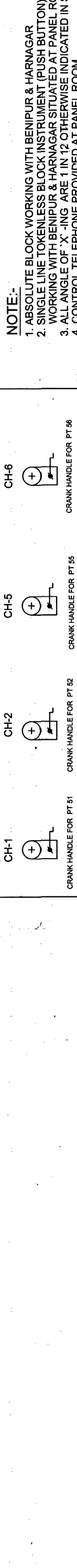


L-XING DETAILS BETWEEN BIRLAUL-BENIPUR

SIG	LXING CLASS	UMUM	KM	LOCK	UNLOCK	LOCK	UNLOCK
1	24A	C	UM/M	42.233	42.233	42.233	42.233
2	25A	C	UM/M	43.038	43.038	43.038	43.038
3	26A	C	UM/M	44.782	44.782	44.782	44.782
4	27A	C	UM/M	47.459	47.459	47.459	47.459
5	28A	C	UM/M	48.844	48.844	48.844	48.844
6	29A	C	UM/M	50.551	50.551	50.551	50.551
7	30A	C	UM/M	51.102	51.102	51.102	51.102
8	31A	C	UM/M	52.601	52.601	52.601	52.601
9	32A	C	UM/M	54.552	54.552	54.552	54.552
10	33A	C	UM/M	55.378	55.378	55.378	55.378

ASPECT CONTROL CHART UP

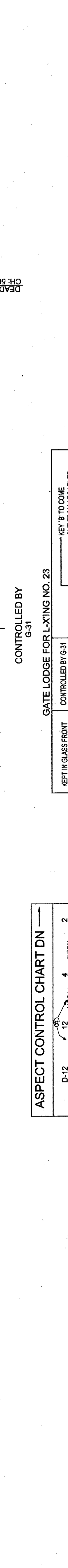
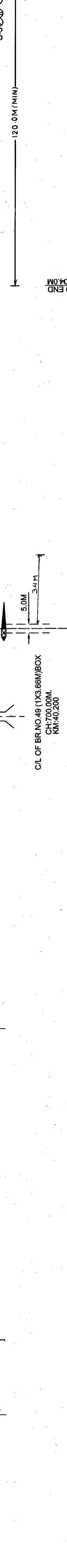
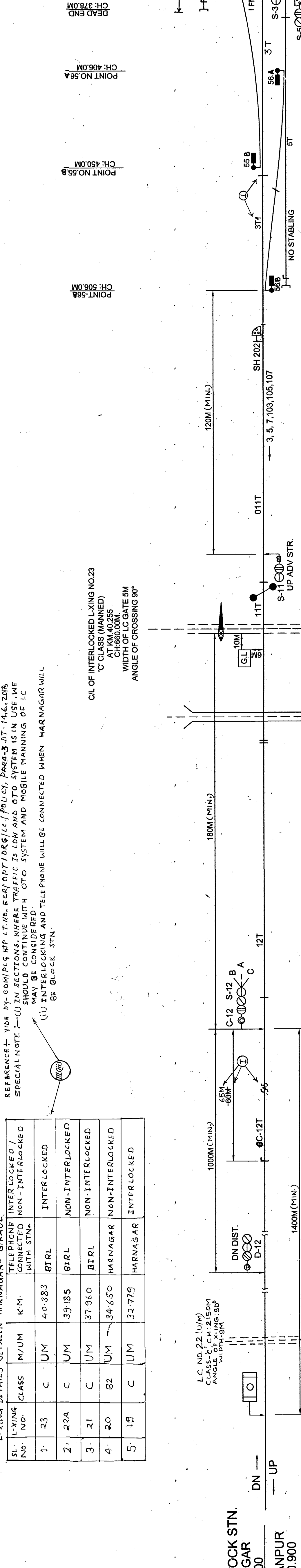
LXING	ASPECT	Y	R	G	G+Y	LOCK	UNLOCK
1	G	Y	R	G	G+Y	LOCK	UNLOCK
2	G	Y	R	G	G+Y	LOCK	UNLOCK
3	G	Y	R	G	G+Y	LOCK	UNLOCK
4	G	Y	R	G	G+Y	LOCK	UNLOCK
5	G	Y	R	G	G+Y	LOCK	UNLOCK
6	G	Y	R	G	G+Y	LOCK	UNLOCK
7	G	Y	R	G	G+Y	LOCK	UNLOCK
8	G	Y	R	G	G+Y	LOCK	UNLOCK
9	G	Y	R	G	G+Y	LOCK	UNLOCK
10	G	Y	R	G	G+Y	LOCK	UNLOCK



PANEL DETAILS

MAIN SIGNAL BUTTONS:- 1,2,3,4,5,6,7,8,11,12  
 C-ON SIGNALS:- C1-C12  
 SHUNT SIGNALS:- 103,104,105,106,107,108, 201,202  
 POINTS CONTROL BUTTONS:- 51,52,55,56,  
 CRANK-HANDLE CONTROL BUTTONS:- CH-1,CH-2,CH-3,CH-4

NOTE:-  
 1. ABSOLUTE BLOCK WORKING WITH BENIPUR & HARNAGAR  
 2. SINGLE LINE TOKENLESS BLOCK INSTRUMENT (PUSH BUTTON)  
 3. WORKING WITH BENIPUR & HARNAGAR SITUATED AT PANEL ROOM.  
 4. CONTROL TELEPHONE CONNECTED BETWEEN PANEL ROOM AND SIGNAL ROOM.  
 5. MAGNETO TELEPHONE CONNECTED BETWEEN PANEL ROOM AND SIGNAL ROOM.  
 6. AXLE COUNTER PROVIDED FOR ALL SIGNALS.  
 7. AXLE COUNTER PROVIDED FOR LAST SIGNAL.  
 8. THIS S.I.P. HAS BEEN MADE IN CONNECTION WITH S.I.P. NO. 2374/2010



PANEL DETAILS

MAIN SIGNAL BUTTONS:- 1,2,3,4,5,6,7,8,11,12  
 C-ON SIGNALS:- C1-C12  
 SHUNT SIGNALS:- 103,104,105,106,107,108, 201,202  
 POINTS CONTROL BUTTONS:- 51,52,55,56,  
 CRANK-HANDLE CONTROL BUTTONS:- CH-1,CH-2,CH-3,CH-4

NOTE:-  
 1. ABSOLUTE BLOCK WORKING WITH BENIPUR & HARNAGAR  
 2. SINGLE LINE TOKENLESS BLOCK INSTRUMENT (PUSH BUTTON)  
 3. WORKING WITH BENIPUR & HARNAGAR SITUATED AT PANEL ROOM.  
 4. CONTROL TELEPHONE CONNECTED BETWEEN PANEL ROOM AND SIGNAL ROOM.  
 5. MAGNETO TELEPHONE CONNECTED BETWEEN PANEL ROOM AND SIGNAL ROOM.  
 6. AXLE COUNTER PROVIDED FOR ALL SIGNALS.  
 7. AXLE COUNTER PROVIDED FOR LAST SIGNAL.  
 8. THIS S.I.P. HAS BEEN MADE IN CONNECTION WITH S.I.P. NO. 2374/2010