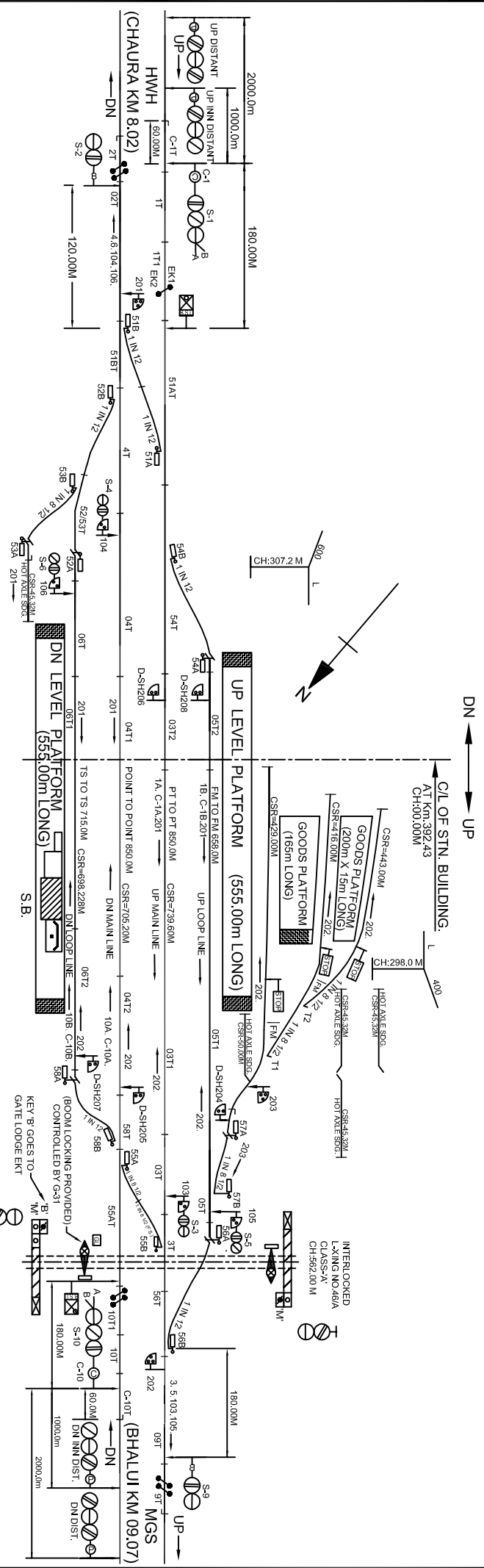
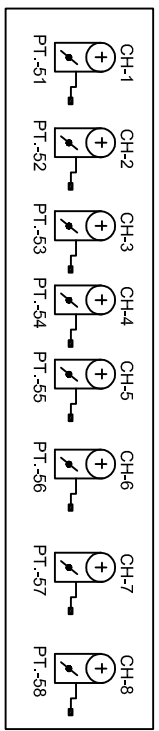


JAMUI (JMU)



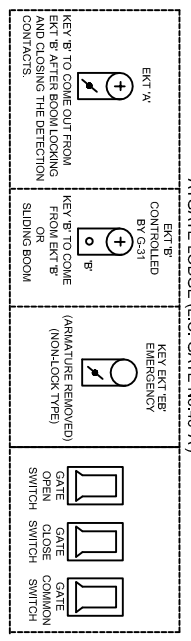
- NOTE:**
1. ABSOLUTE BLOCK SYSTEM OF WORKING WITH BHALLUI & CHAURA.
 2. MANGETO TELEPHONE CONNECTED WITH SM JMU TO L.C. 46/A, 45/C & 47/C.
 3. ALL ANGLE OF 'X' JUNG ARE 1 IN 12 EXCEPT AS MENTIONED IN SP.
 4. CONTROL TELEPHONE PROVIDED AT SWG OFFICE.
 5. AS PER SEM PART-I PARA 17.13.3 THE INSULATED RAIL JOINT SHALL BE INSTALLED AT LEAST ONE RAIL LENGTH IN ADVANCE OF THE CONCERNED SIGNAL.
 6. LEAD LITS SIGNAL PROVIDED.
 7. POINTS SHALL BE NORMALLY BE LOCKED IN NORMAL POSITION UNLESS UNLOCKED BY SPECIAL SLIDING ROOM PROVIDED AT LC GATE NO.46/A AT CH-562.
 8. UP/SB BLOCK PANEL WITH HASSD/C WORKING BETWEEN JMU/CHX.
 9. UP/SB BLOCK PANEL WITH HASSD/C WORKING BETWEEN JMU/CHX.
 10. UP/SB BLOCK PANEL WITH HASSD/C WORKING BETWEEN JMU/CHX.
 11. ELECTRICALLY OPERATED LIFTING BARRIER PROVIDED AT LC 46/A AT CH-562M.
 12. ROAD SIGNAL SHALL DISPLAY RED ASPECT AT LC GATE NO.46/A WHEN SLIDING ROOM IS USED TO CLOSE THE ROAD TRAFFIC.



CRANK HANDLES ARE WELDED WITH KEY

VDU DETAIL S:-
 MAIN SIGNAL - T 2,3,4,5,6,9,10
 SHUNT SIGNAL - 1,103,104,105,106,201,202,203
 CALLING-ON SIGNAL - C-1, C-10
 POINTS - 51,52,53,54,55,56,57,58
 CRANK HANDLE :- CH-1,CH2,CH3,CH4,
 CH5,CH6,CH7,CH8.
 GATE CONTROL :- G-31,
 SLOT : SW 57.

AT VDU ROOM



ATGATE LODGE (L.C. GATE NO.46/A)

EAST CENTRAL RAILWAY		CENTRAL EI		SR. NO. ML-5	
DANAPUR DIVISION		SIGNAL INTERLOCKING PLAN		ECR/SIP/DNR/119/2010	
SR.OSTEGRDNKR	OSTEGRDNKR	ASTEGRDNKR	SEBDRGNKR	AL1-VIII	
M.M.C.L.		M.M.C.L.		M.M.C.L.	