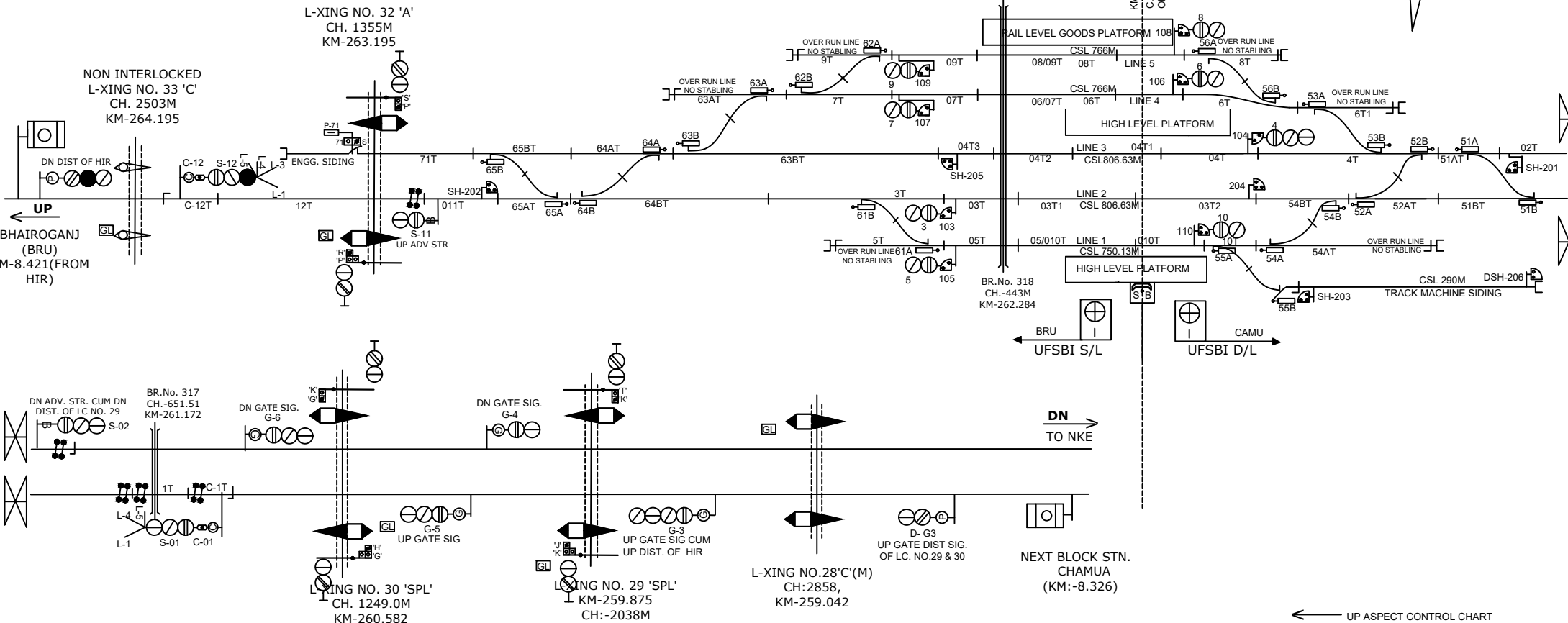
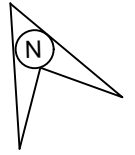
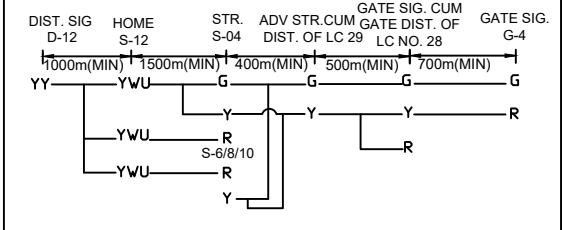


HARINAGAR STATION

हरिनगर स्टेशन



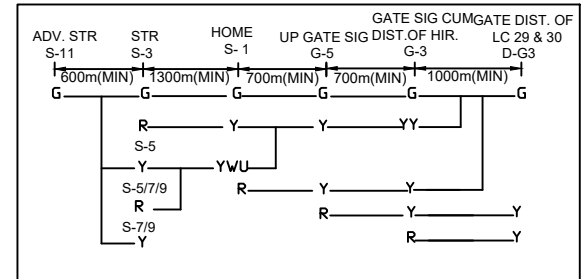
DN ASPECT CONTROL CHART



- CONNECTED WITH SM AT L-XING No. 32 'C' AT KM 263.195 BETWEEN BRU-HIR
- CONNECTED WITH SM AT L-XING No. 33 'C' AT KM 264.195 BETWEEN BRU-HIR

- CONNECTED WITH SM AT L-XING No. 26 'SPL' AT KM. 256.7 BETWEEN CAMU-HIR
- CONNECTED WITH SM AT L-XING No. 28 'C' AT KM 259.042 & 29 'SPL' AT KM. 259.875 BETWEEN CAMU-HIR
- CONNECTED WITH SM AT L-XING No. 30 'C' AT KM 260.582 BETWEEN HIR-CAMU

UP ASPECT CONTROL CHART



CLASS OF STATION : B
STD OF SIG & INTERLOCKING: STD-II®

EAST CENTRAL RAILWAY
SAMASTIPUR DIVISION

(E.I)
STATION WORKING RULE DIAGRAM
MACL, STD-II®, CLASS 'B'

HARINAGAR

SWRD NO.-