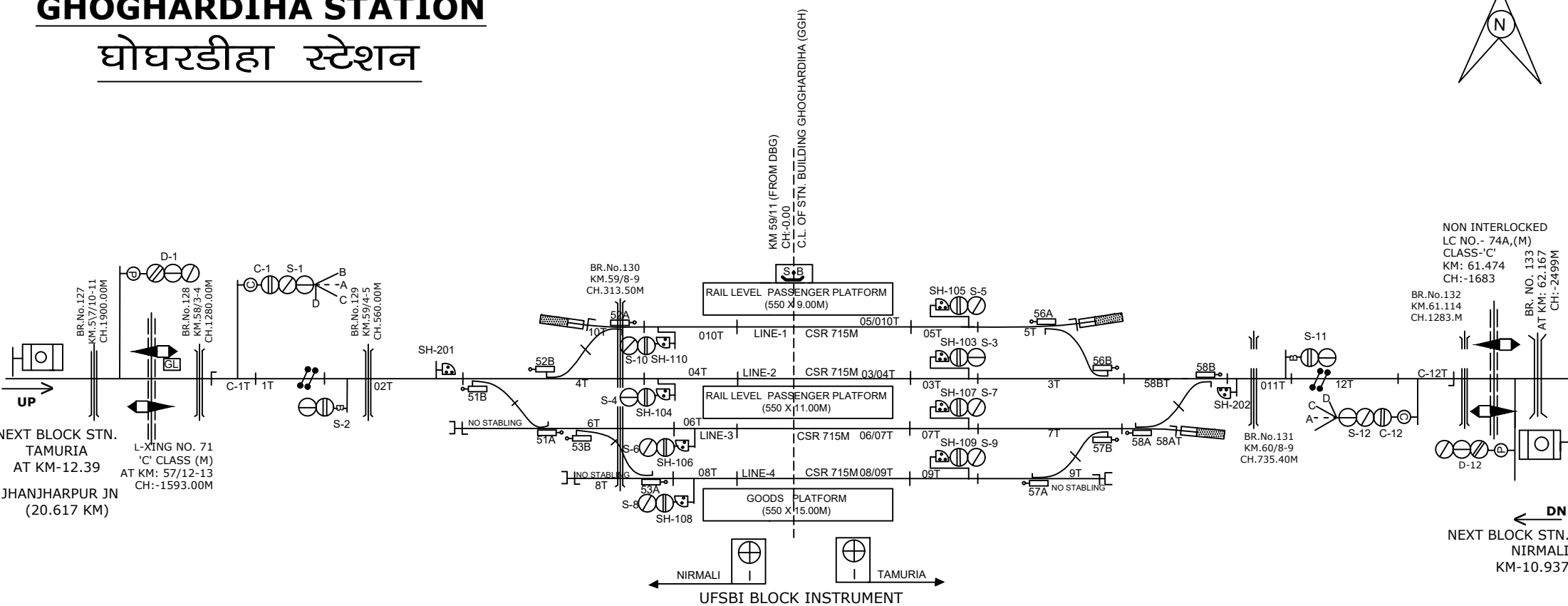
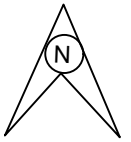


# GHOGHARDIHA STATION

## घोघरडीहा स्टेशन



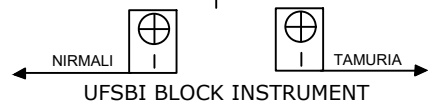
NON INTERLOCKED  
LC NO.- 74A,(M)  
CLASS-'C'  
KM: 61.474  
CH:-1683

BR.No.132  
KM.61.114  
CH.1283.M

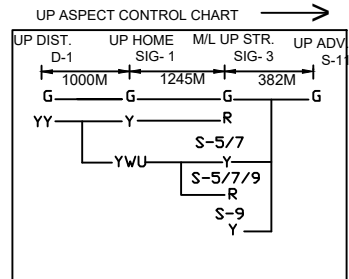
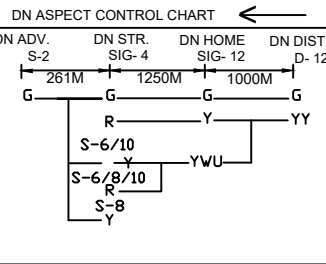
BR. NO. 133  
AT KM: 62.167  
CH:-2499M

BR.No.131  
KM.60/8-9  
CH.735.40M

← DN  
NEXT BLOCK STN.  
NIRMALI  
KM-10.937



NOTE:-  
MEGNETO PHONE PROVIDED BETWEEN S.M. ROOM & LC NO.67,68,70,71,74A



CLASS OF STATION : B  
STD OF SIG & INTERLOCKING: STD-II®

EAST CENTRAL RAILWAY SAMASTIPUR DIVISION	Sr.DSTE/SPJ	DSTE/SPJ	SSE/SIG/SPJ	TO SUIT SIP NO. ECR/SIP/SPJ-GGH/378/2021, ALT-A-I	CENTRAL CONTROL (E.I.) STATION WORKING RULE DIAGRAM MACL, STD-II® CLASS 'B'	<b>GHOGHARDIHA</b> घोघरडीहा	SWRD NO.-
					DY.CSTE/CON/SPJ 2021(R.D.)/07		