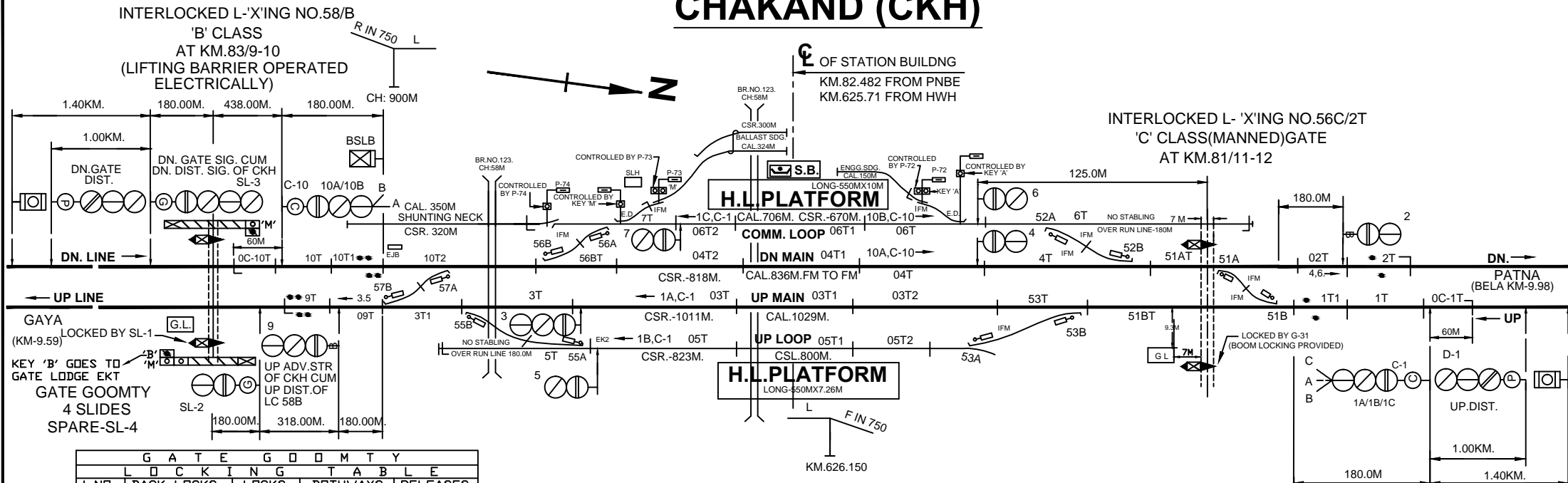


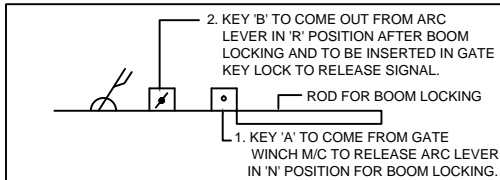
CHAKAND (CKH)



G A T E G O O M T Y				
L.NO.	BACK LOCKS	LOCKS	BOTHWAYS	RELEASES
1	-	-	-	SL2, SL3.
2	SL1	-	-	-
3	SL1	-	-	-
4	SPARE	-	-	-

NOTE:-
1. ONE KEY LOCK WILL BE FITTED ON SM'S SLIDE No.1 TO ACHIEVE 1 RELEASE BY KEY 'B' LOCKING.

AT GATE LODGE OF LC 58 'B'.



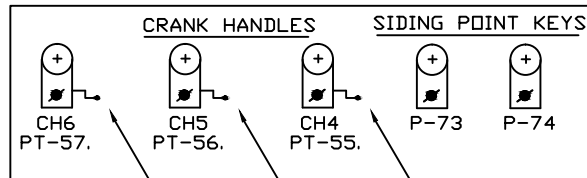
NOTE:-

- ABSOLUTE BLOCK SYSTEM OF WORKING WITH GAYA JN. & BELA.
-
- MAGNETO TELEPHONE PROVIDED BETWEEN SM'S OFFICE AND LC GATE NO- 52 'C', GATE No. 56 'C', LC GATE No. 58 'B', & LC GATE No. 64 'B'.
- CONTROL TELEPHONE PROVIDED AT SM'S OFFICE IN PANEL ROOM.
- ALL ANGLE OF X-ING ARE 1 IN 12 OR IT IS INDICATED.
- LED LIT SIGNAL TO BE USED.
- SLIDING BOOM PROVIDED AT LC GATE No 58 'B' AT KM 83/29-31.
- DEAD APPROACH PROVIDED AT LC GATE No. 58 'B' WITH 60 SECONDS TIME.
- UFSBI BLOCK PANEL WITH BPAC (SSDAC) WORKING BETWEEN CHAKAND - BELA.
- UFSBI BLOCK PANEL WITH BPAC (HASSDAC) WORKING BETWEEN CHAKAND - GAYA JN.

PANEL IN S.M.'s OFFICE

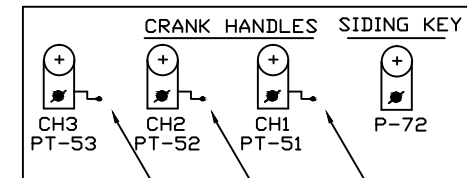
MAIN SIGNAL BUTTONS: - 1.2.3.4.5.6.7.9.10.
 CALLING-ON-SIGNAL BUTTONS: - C-1,C-10
 POINTS BUTTONS: - 51.52.53.55.56.57.
 POINT CONTROL BUTTONS: - P-72,P-73 & P-74.
 L-X'ING GATE CONTROL BUTTON:- G-31.
 CRANK HANDLE CONTROL BUTTONS:- CH1.CH2.CH3.
 CH4.CH5.CH6.

AT CENTRAL PANEL ROOM



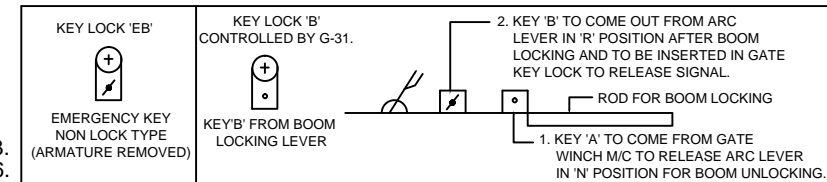
CRANK HANDLE WELDED WITH KEY

AT CENTRAL PANEL ROOM



CRANK HANDLE WELDED WITH KEY

AT GATE LODGE OF LC 59 'C'.



EAST CENTRAL RAILWAY DANAPUR DIVISION	SR.DSTE/ECR/DNR	ASTE/ECR/DNR	SSE/DRG/DNR	PANEL SIGNALLING PLAN MACL, STD-II(R), CLASS-'B'.	CHAKAND (CKH)	SR. NO. PG-11. ECR/SIP/DNR/298/2006 ALT-VII
--	-----------------	--------------	-------------	---	----------------------	--